

Processing Your GPS Data

- Connect your device
- Start Pathfinder Office
- Download Data
- Differentially Correct
- Export Shapefiles or Geodatabase

Detailed instructions in class pdfs and videos



Set up your device

Get Outlook contacts, calendar, e-mail and other information on your device.



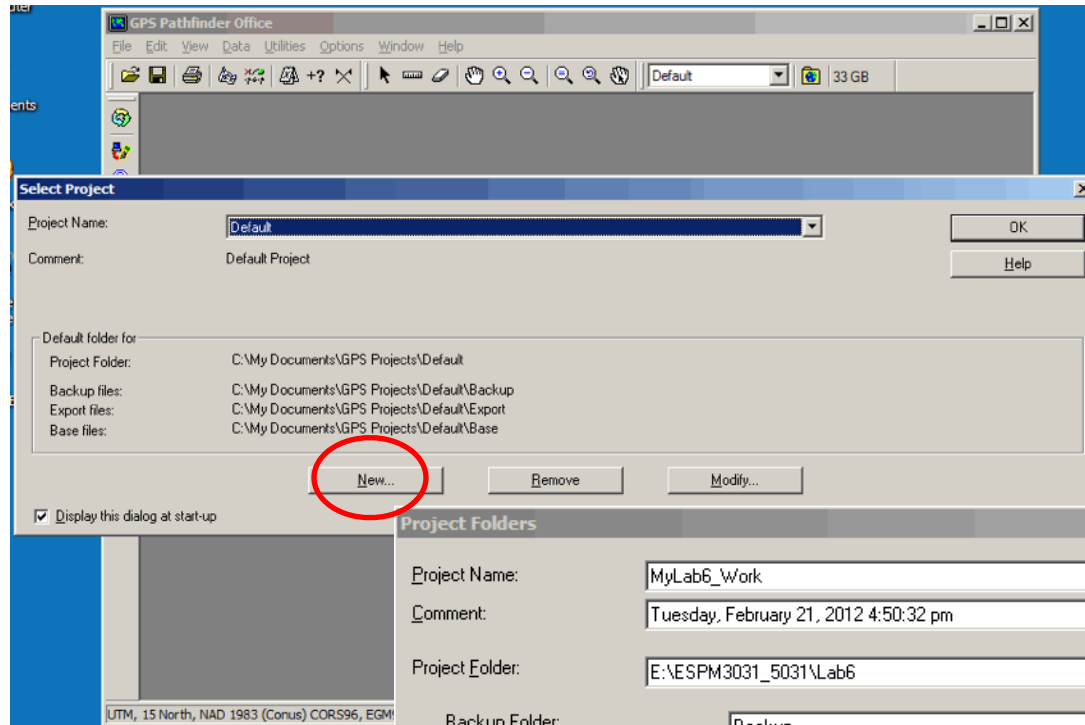
Connect without setting up your device



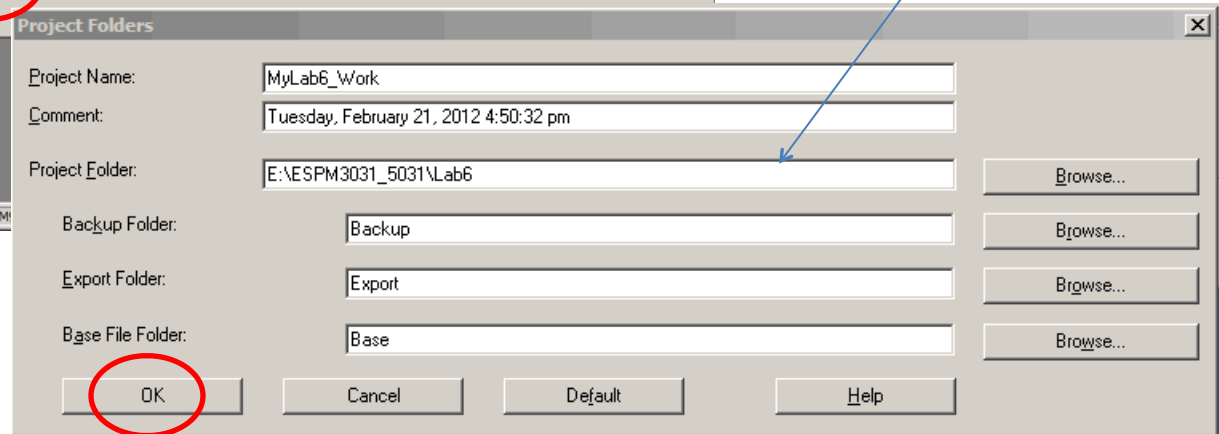
Connected



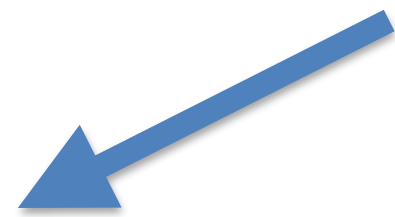
START PATHFINDER OFFICE



Specify working directory (often new)



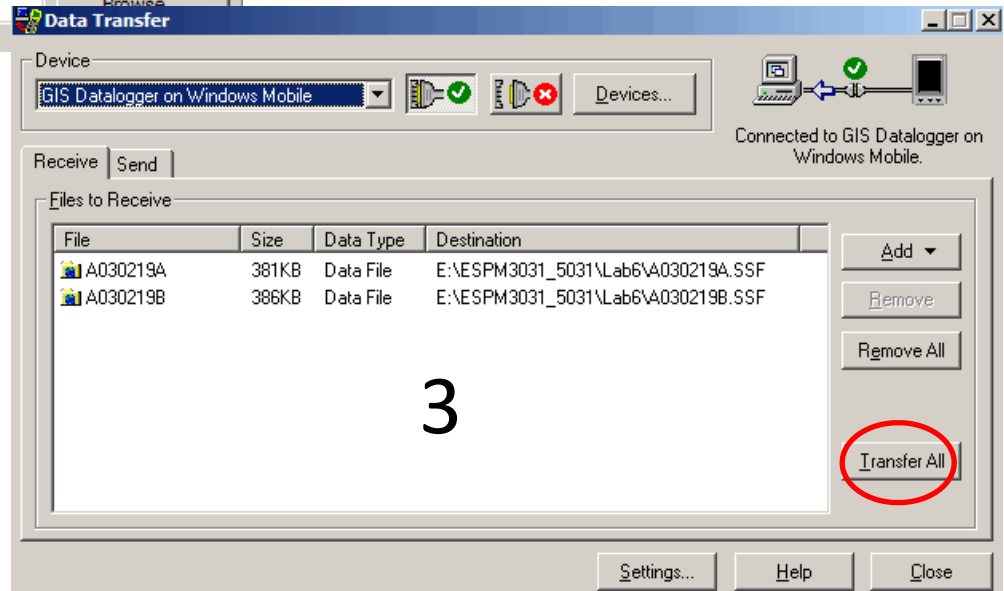
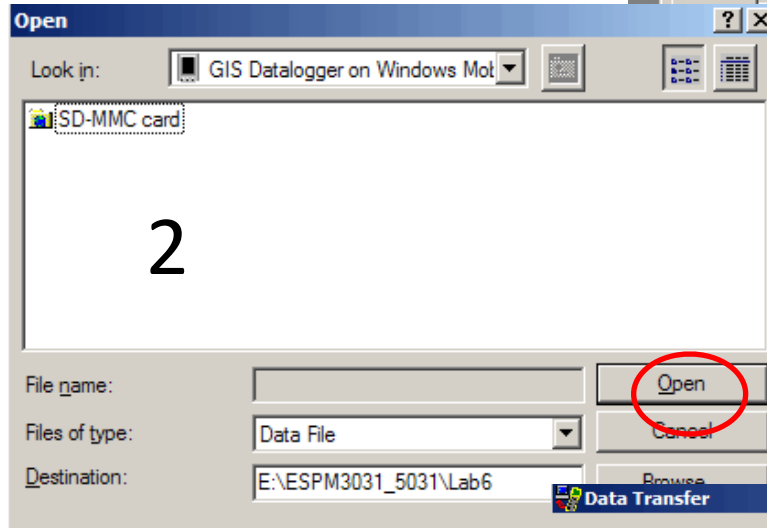
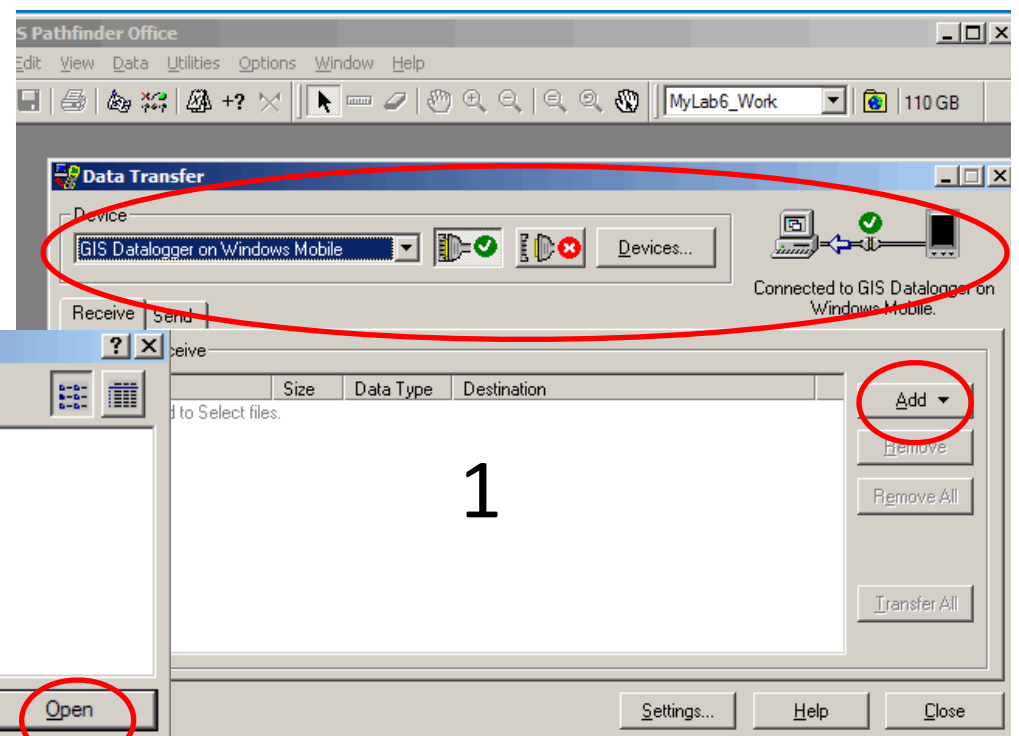
On Main Pathfinder Screen - Utilities



Data Transfer

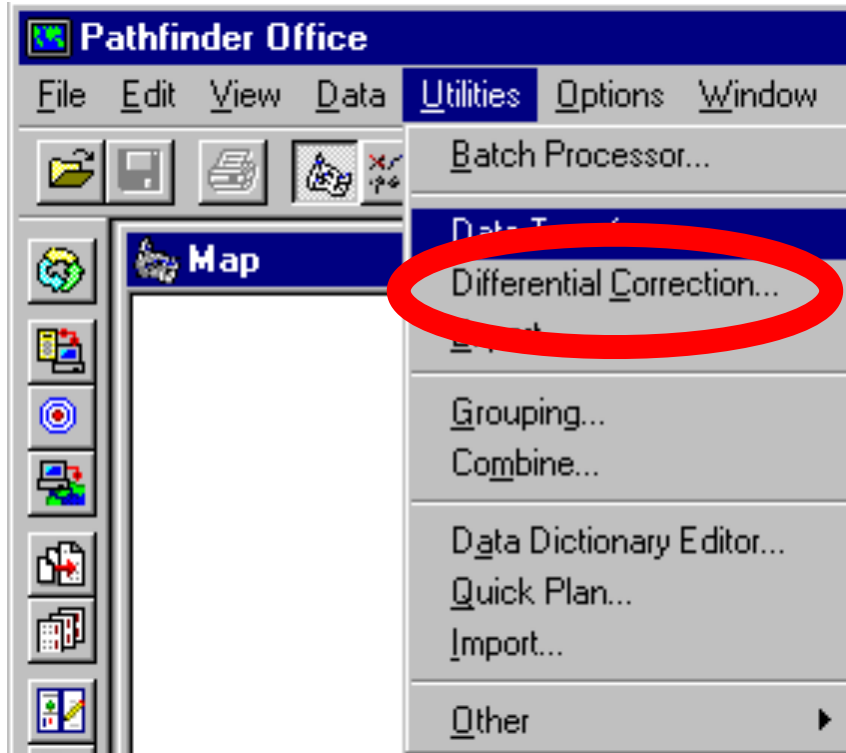
1 - Connect to device

2 - Open and select files



3 - Transfer All selected files

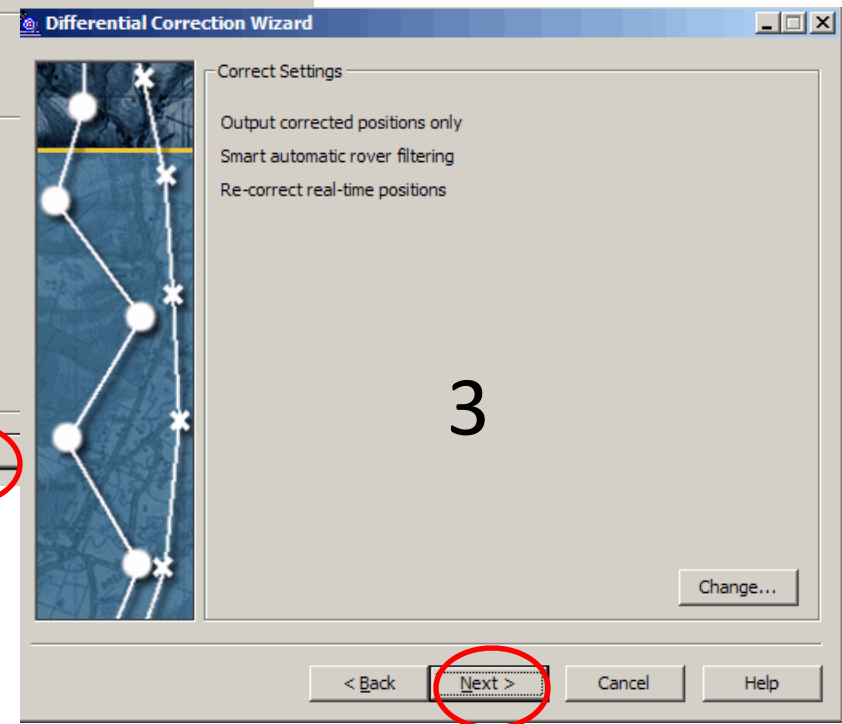
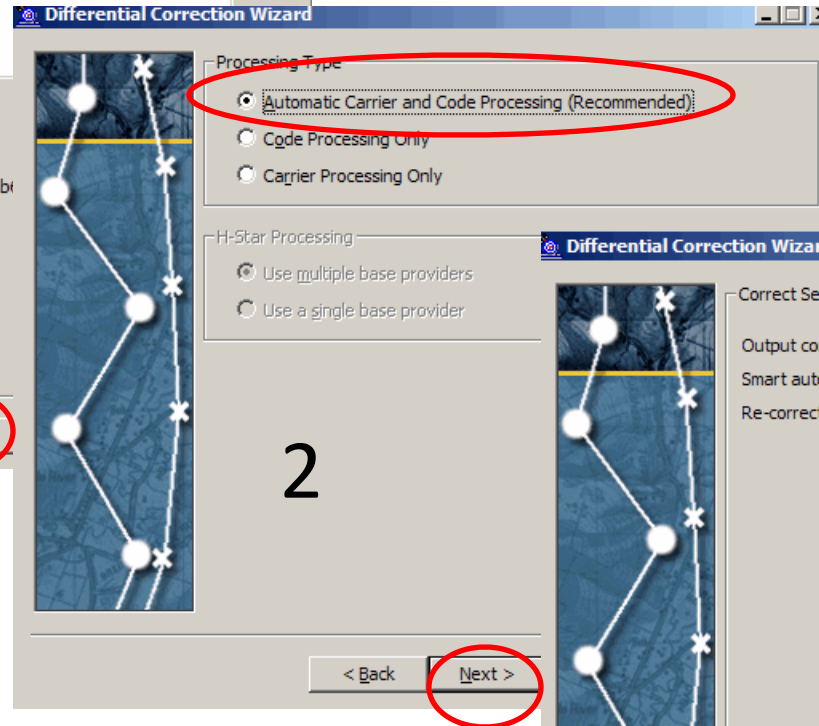
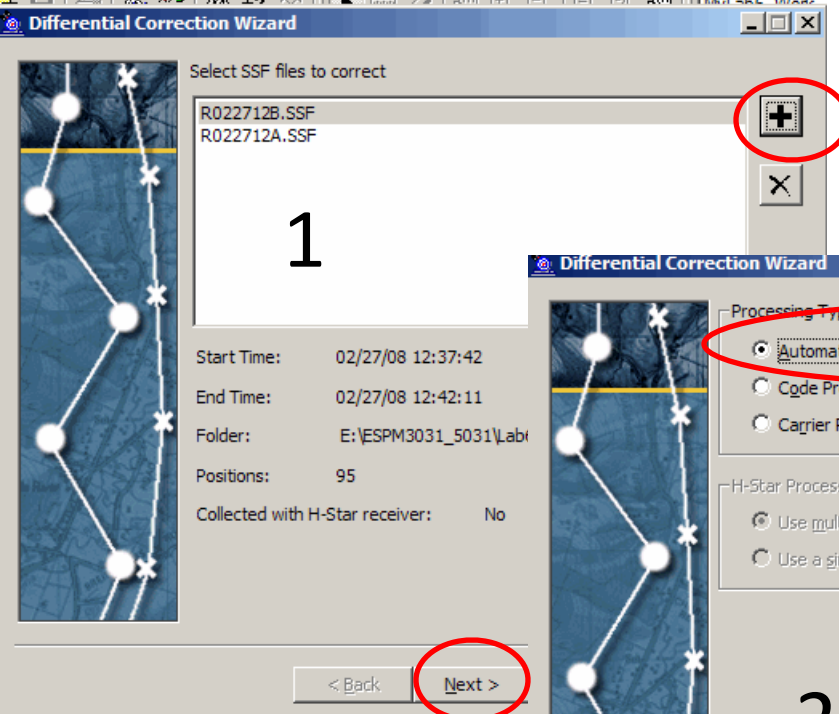
On Main Pathfinder Screen - Utilities

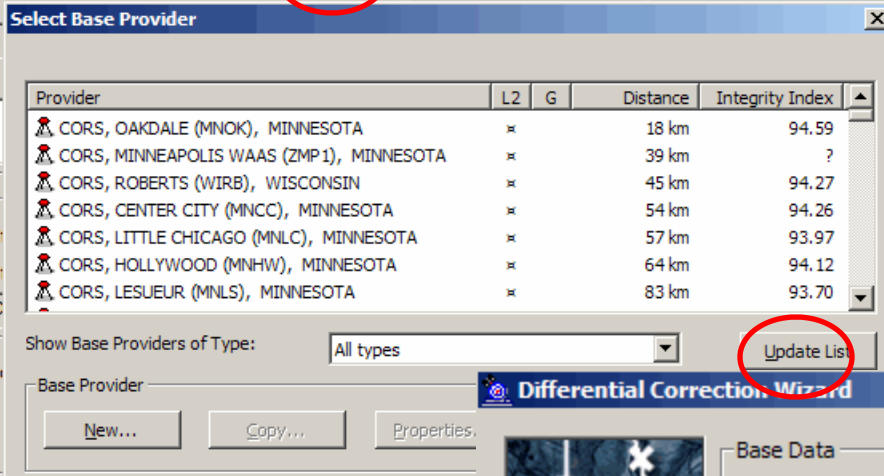
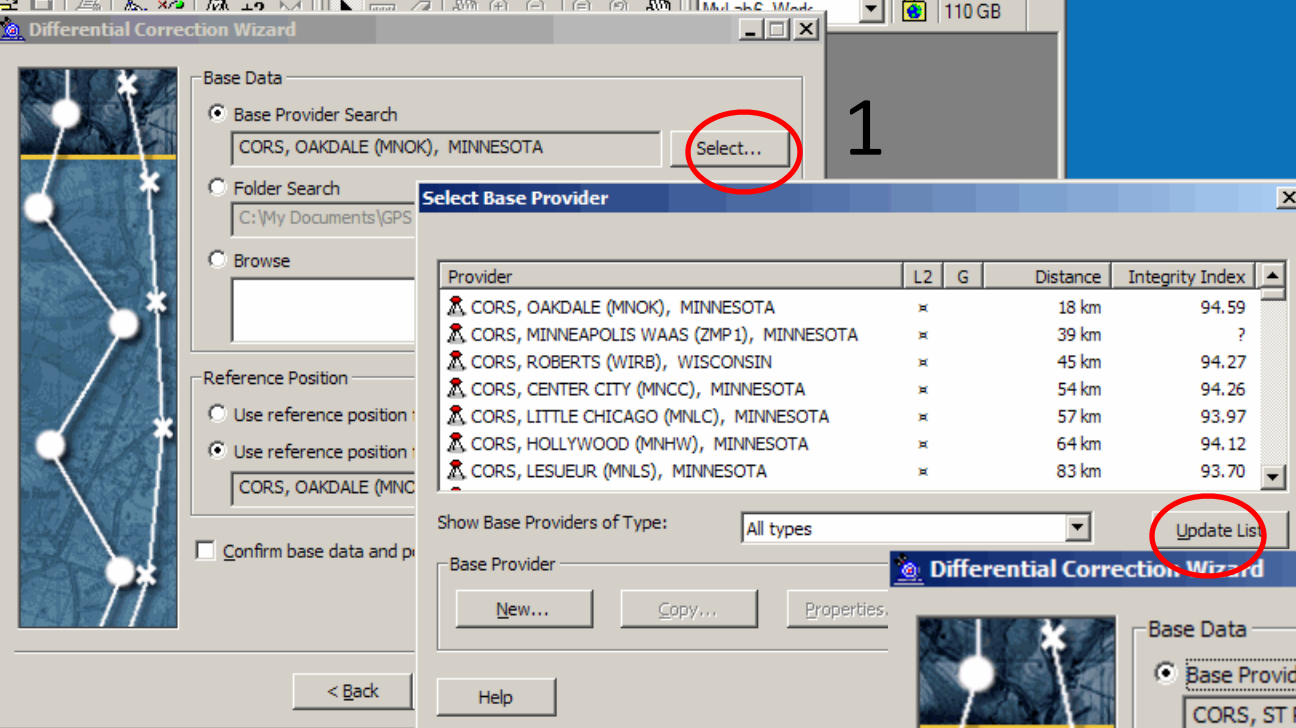


Diff. Corr.
Export

Differential Correction

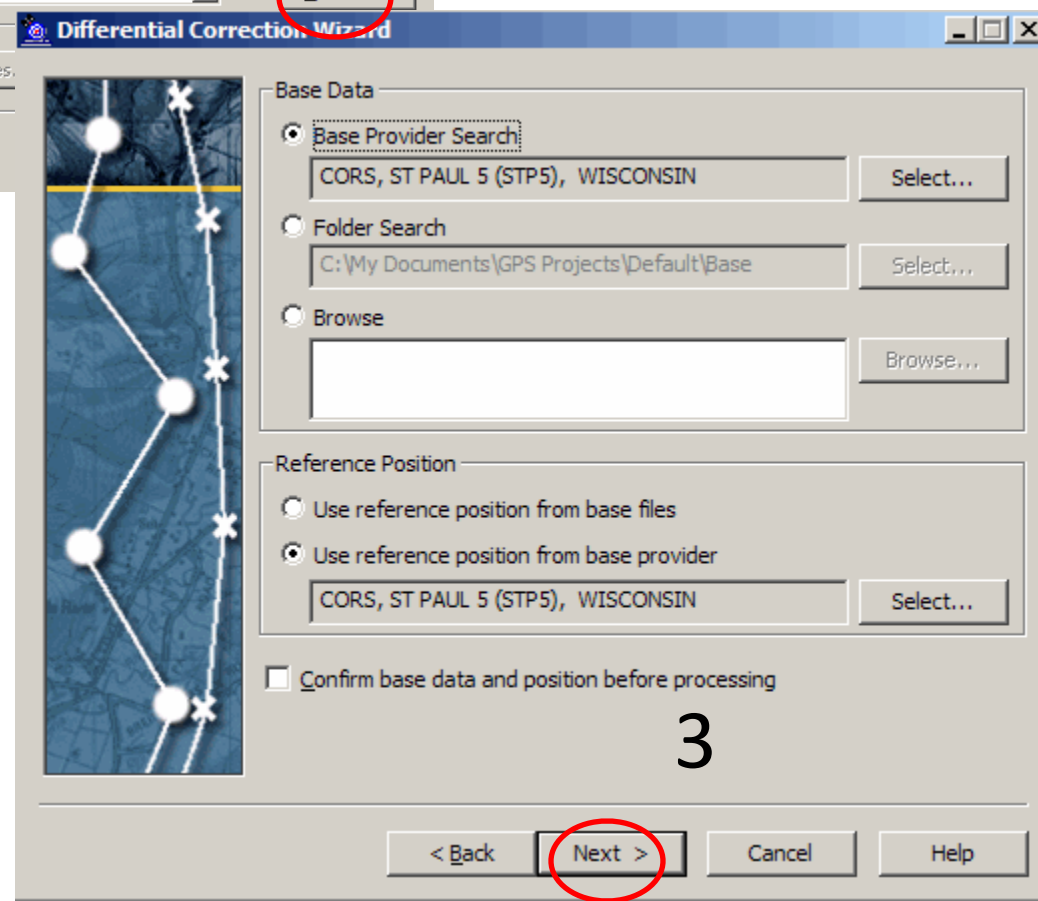
Multi-step process, see videos and pdfs for steps

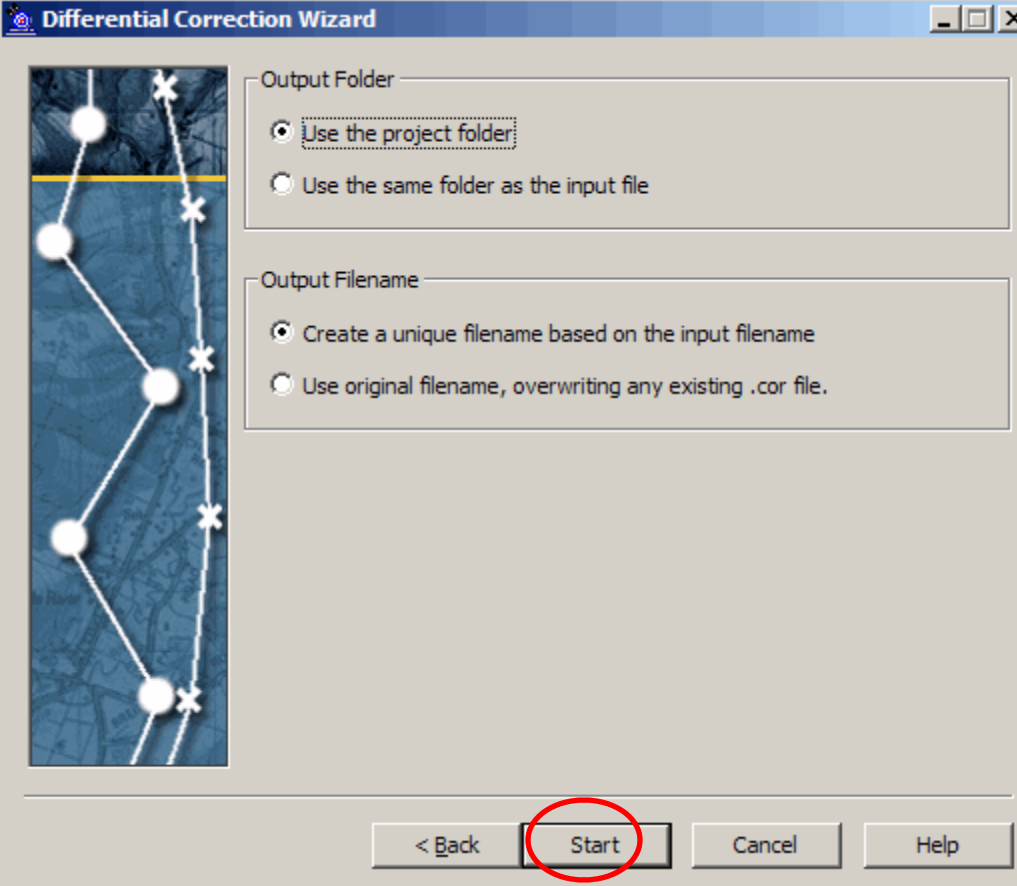




Select nearby base station

Use reference position from base provider

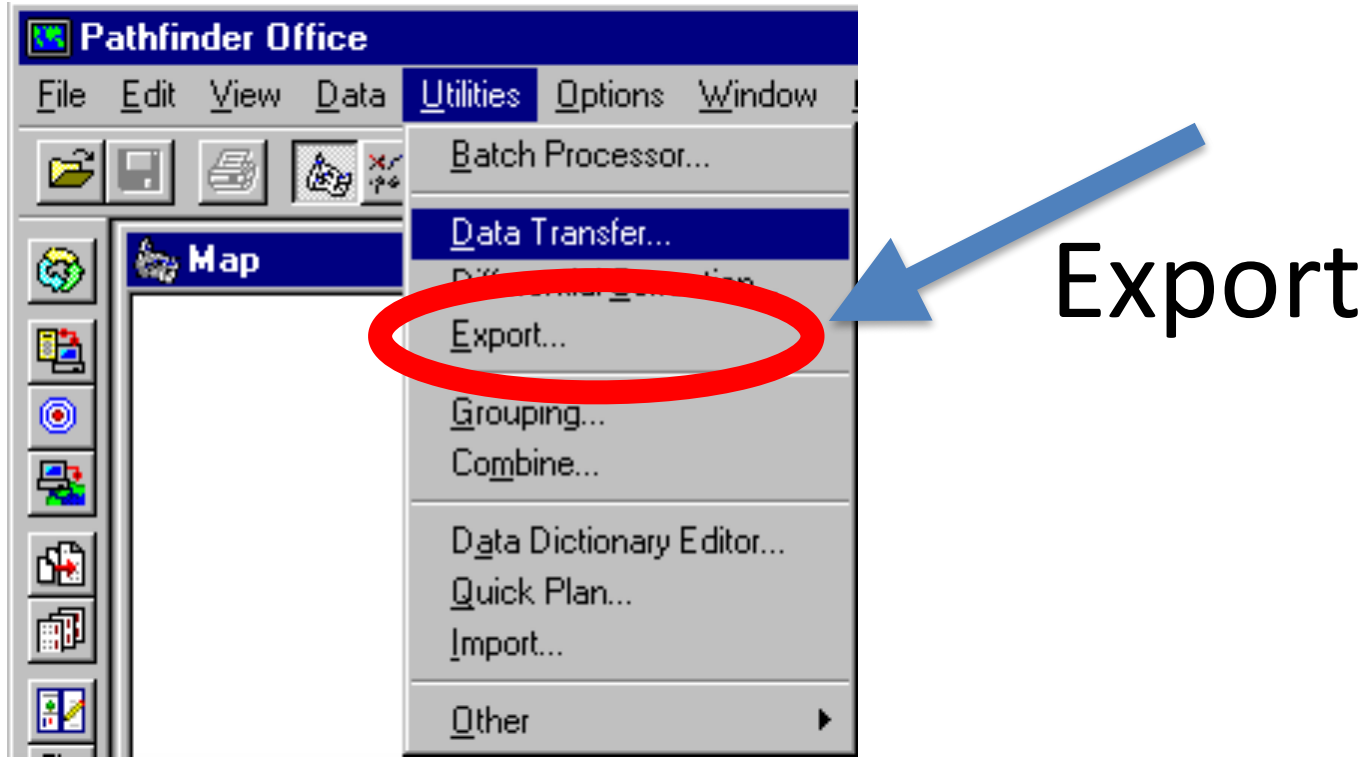


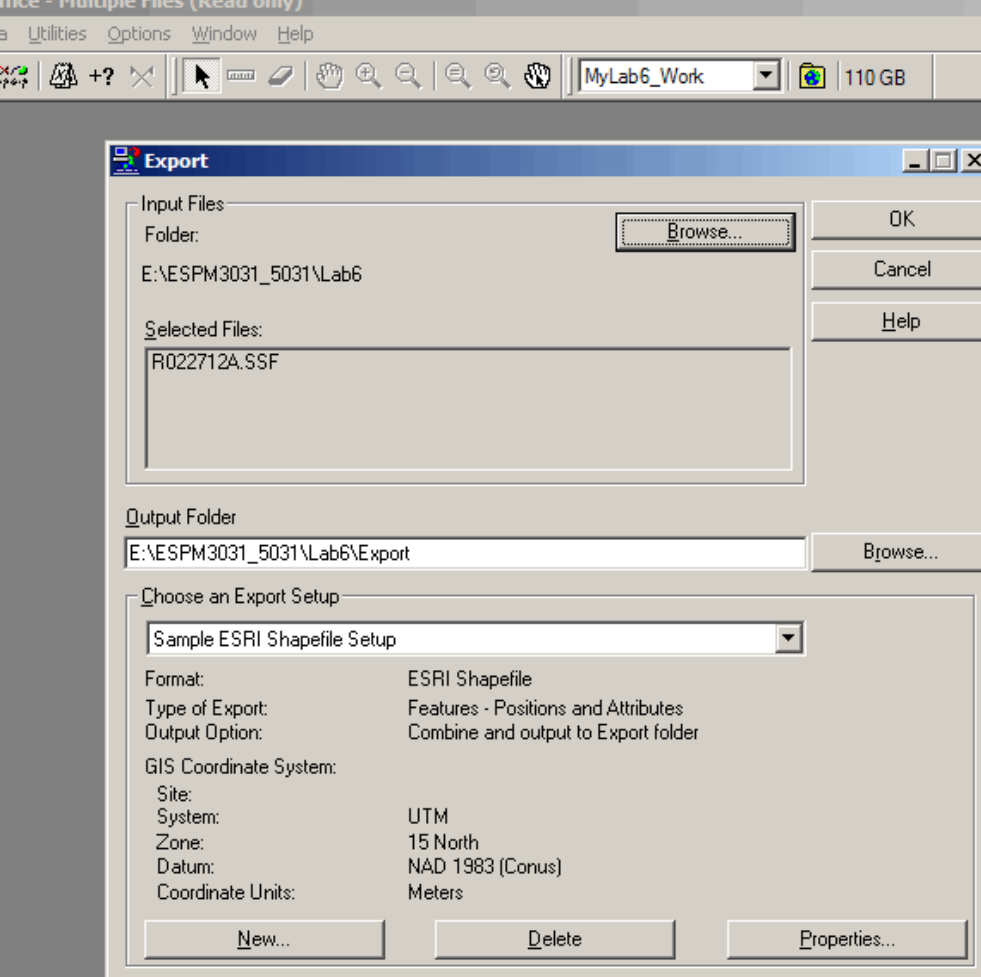


Do the Differential Correction, output to current project folder as .cor file



On Main Pathfinder Screen - Utilities





Exporting the data
As noted in detailed
instructions, be careful about:

- The right coordinate system
- Exporting only Corrected fixes
- not overwriting previous exports (manage via renaming or directories)