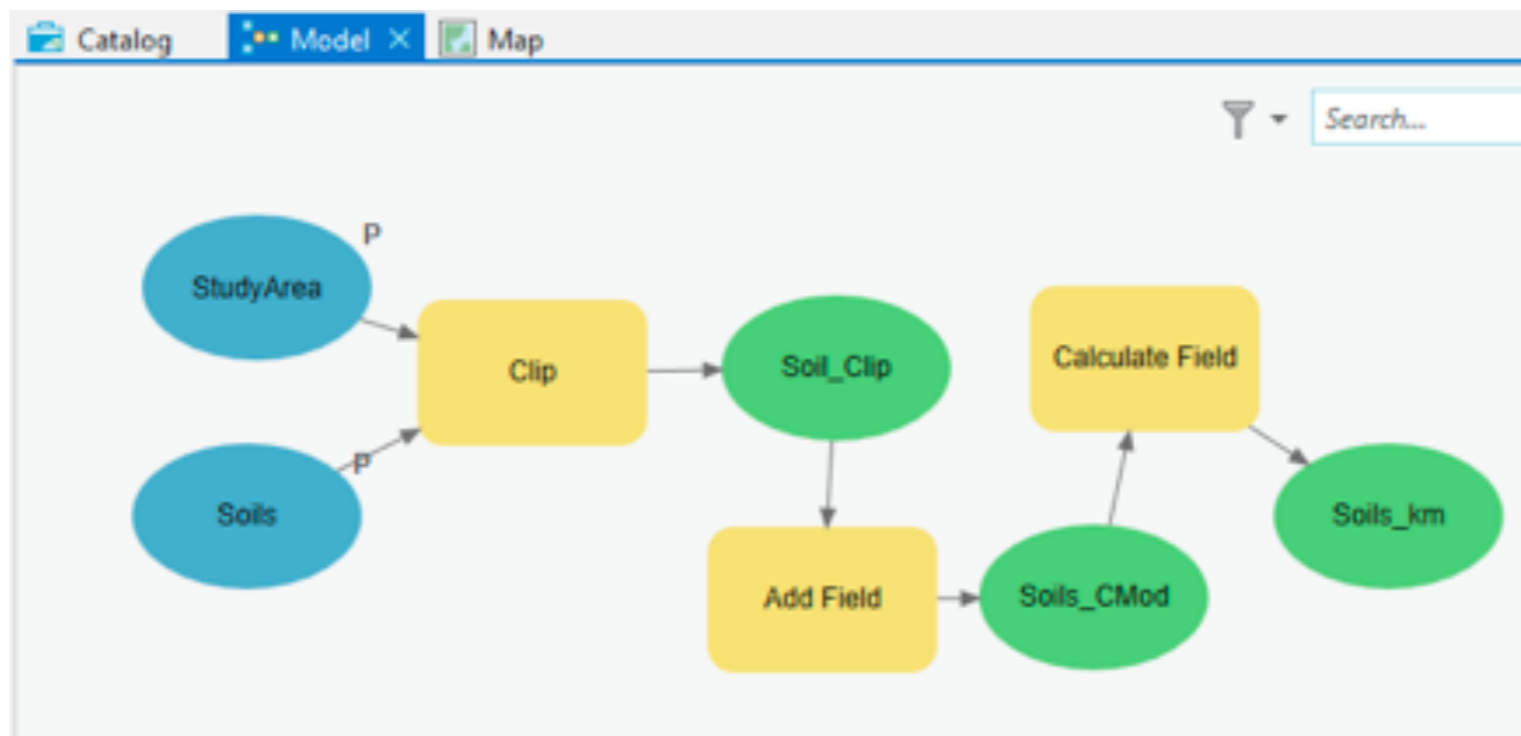
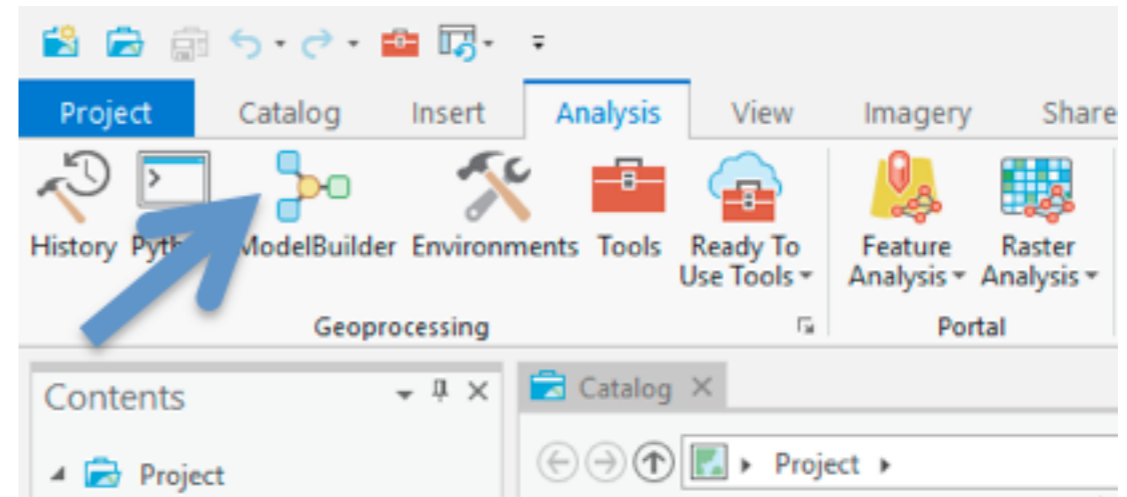


Model Builder

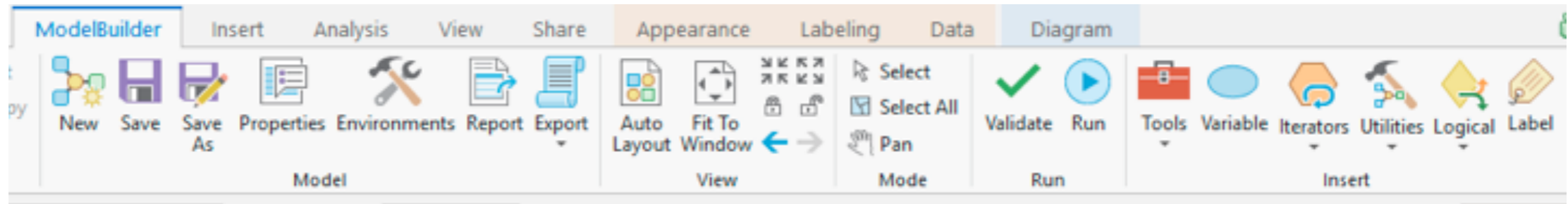
Automate Workflows in ArcGIS



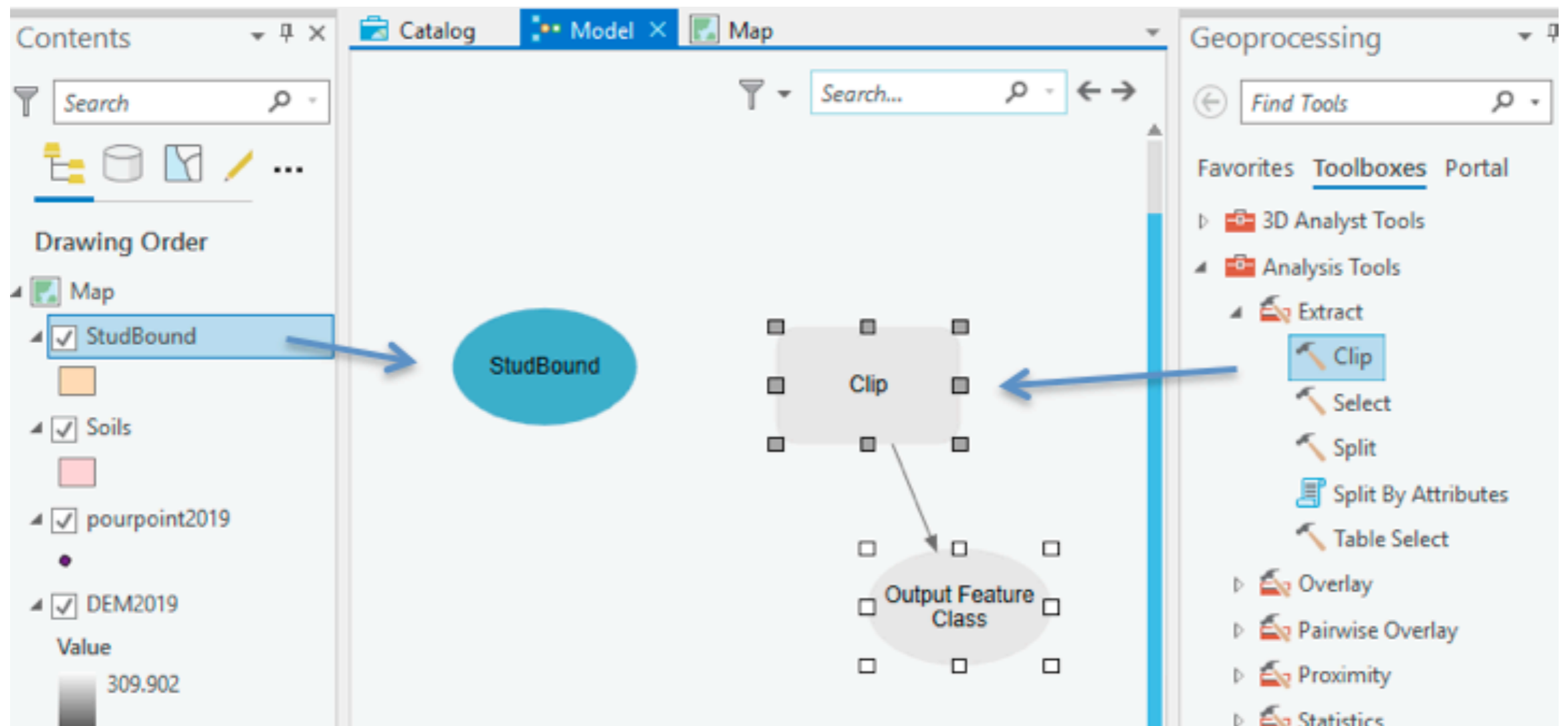
Widget in the Analysis Tab



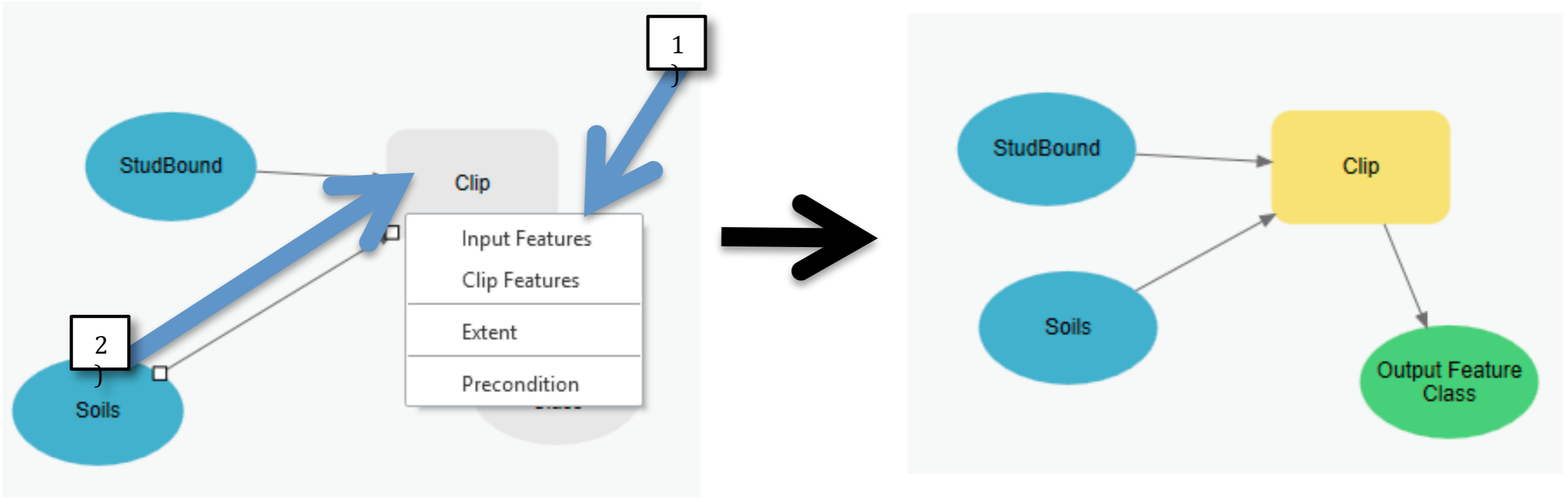
Opens a Toolbar:



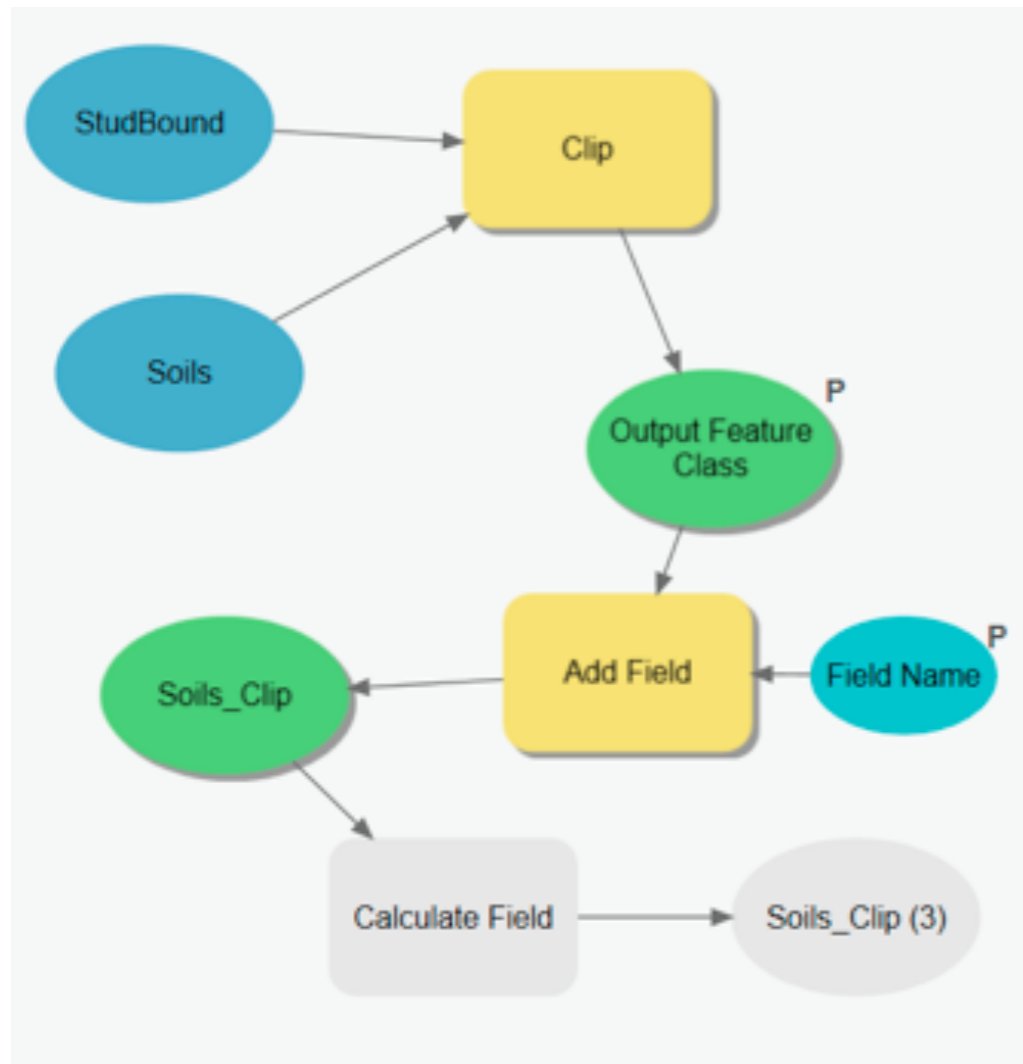
Drag Data and Operations



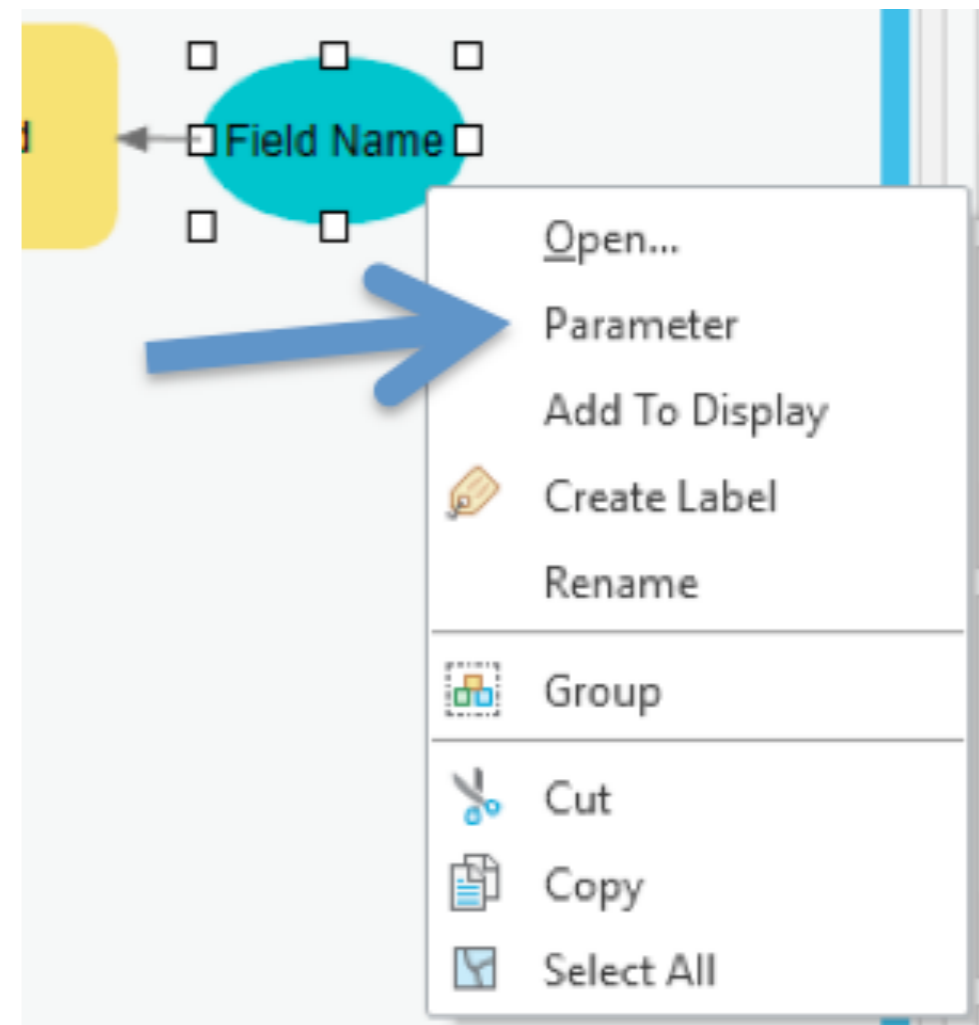
Click-drag-connect between layers and operations, then select among inputs



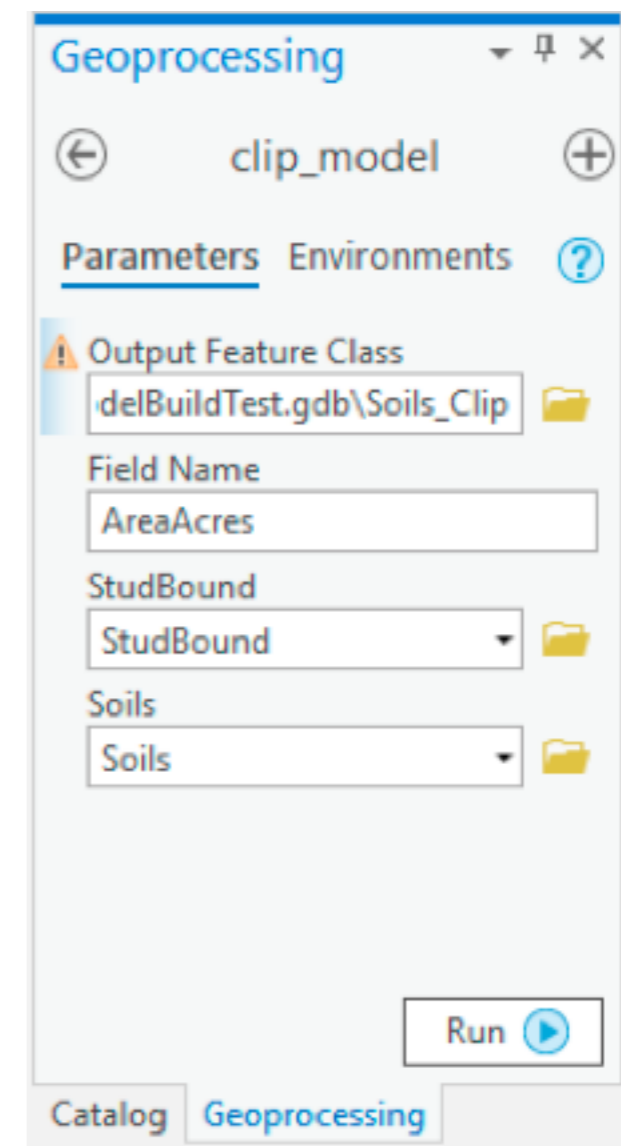
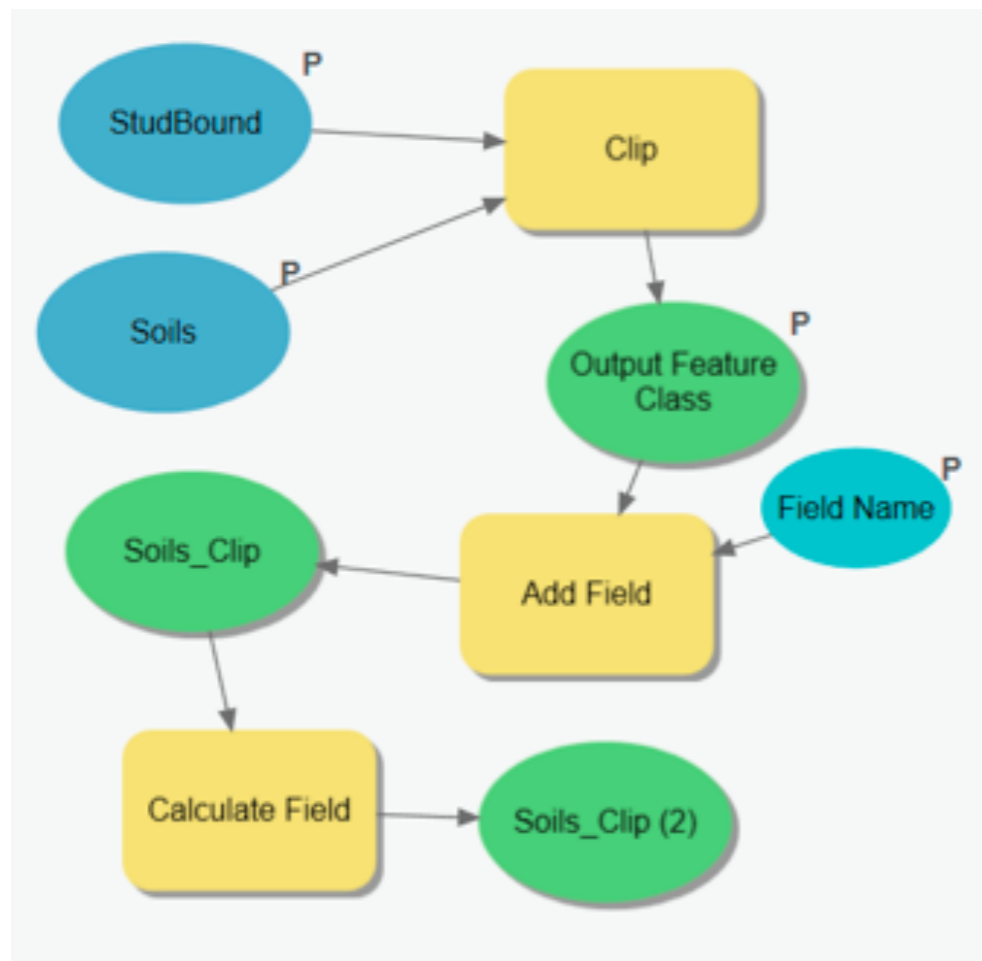
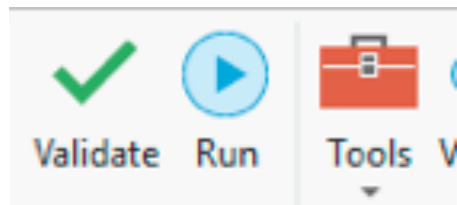
Bubbles are Colored when All Required Inputs are Specified



You can right click on an input bubble, and set a value as a parameter - required user input



Validate/Run the Model



Assignment: Create a model to calculate watersheds from a set of pour points

You may use your own data, or use the data in the L:
\\ESPMx295\Data\ModelBuilder\DEM_PP_ModBld.gdb

The following should be model input parameters:

- input DEM
- input pourpoints layer
- snap distance
- output raster watersheds
- output vector watersheds
-

Models are saved in a project toolbox, or a connected folder

