

Home Access

VPN <http://it.umn.edu/downloads-guides>

Use the Download Guides to select your computer operating system.

Download and install the software.

Run the VPN software and log in

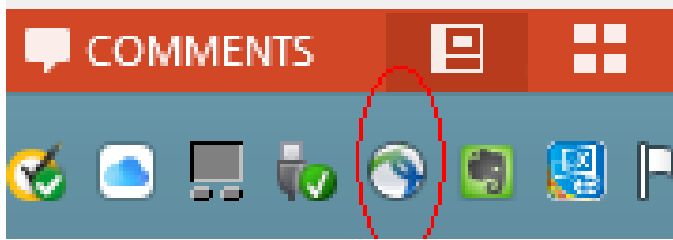
THEN

Map to a network drive (see next page if needed)

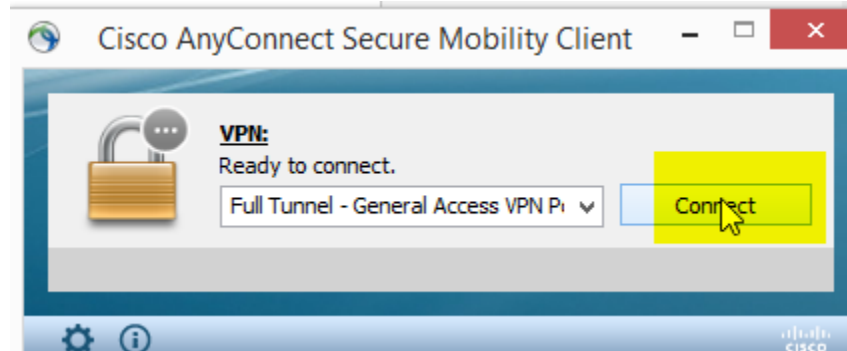
Use this “share name”

<\\files.umn.edu\cfans\labs>

This should give you access to the LAB network drive

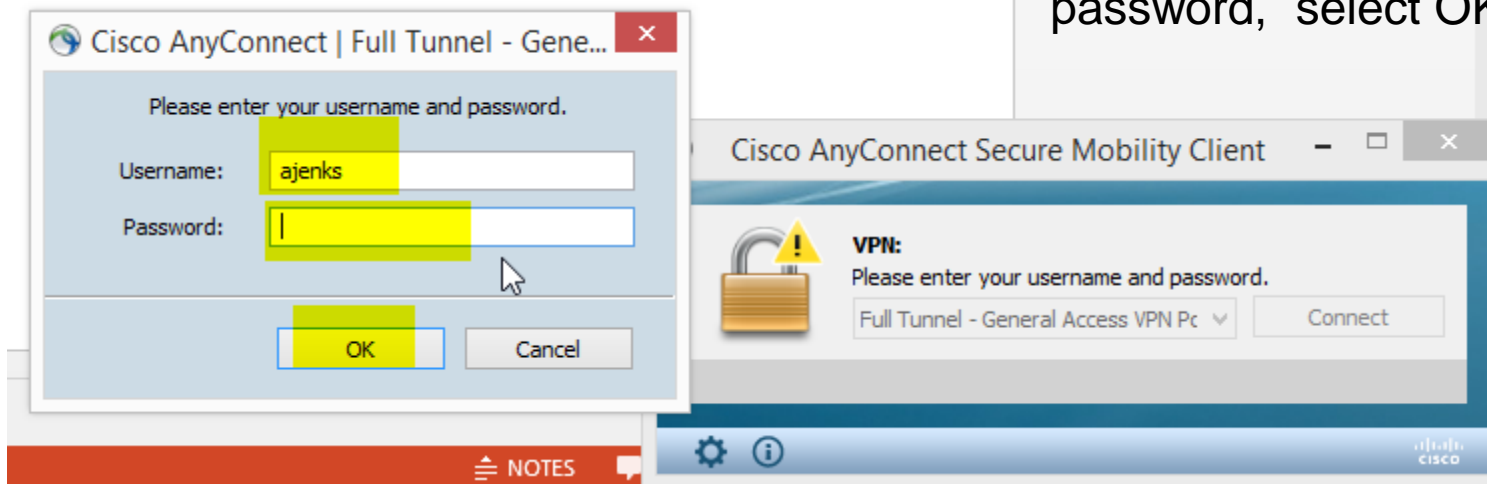


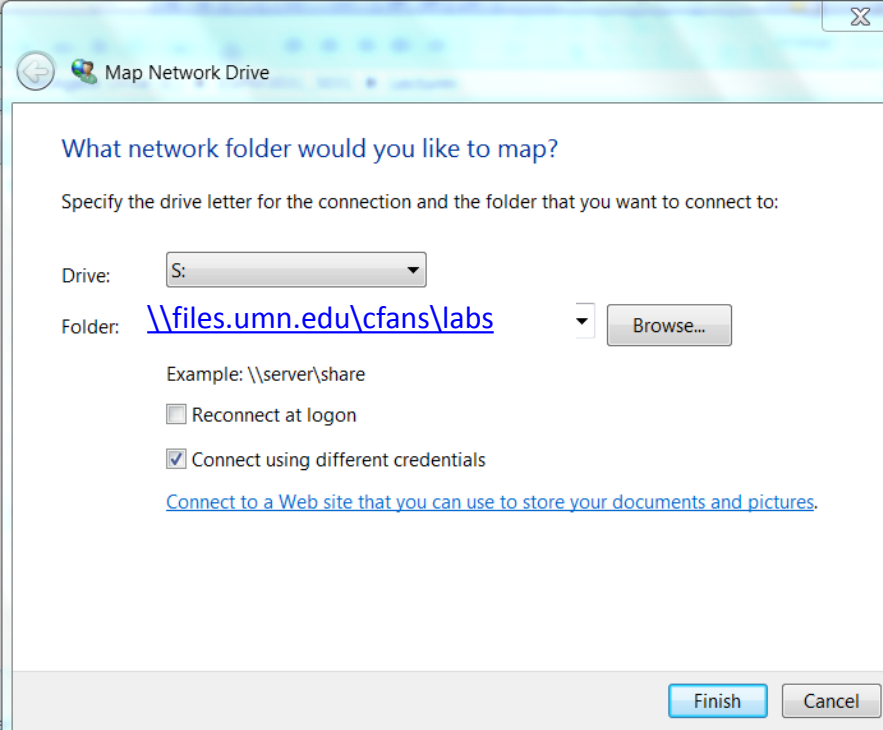
After the Anyconnect is installed find the little icon in the system tray and click on icon Opening AnyConnect



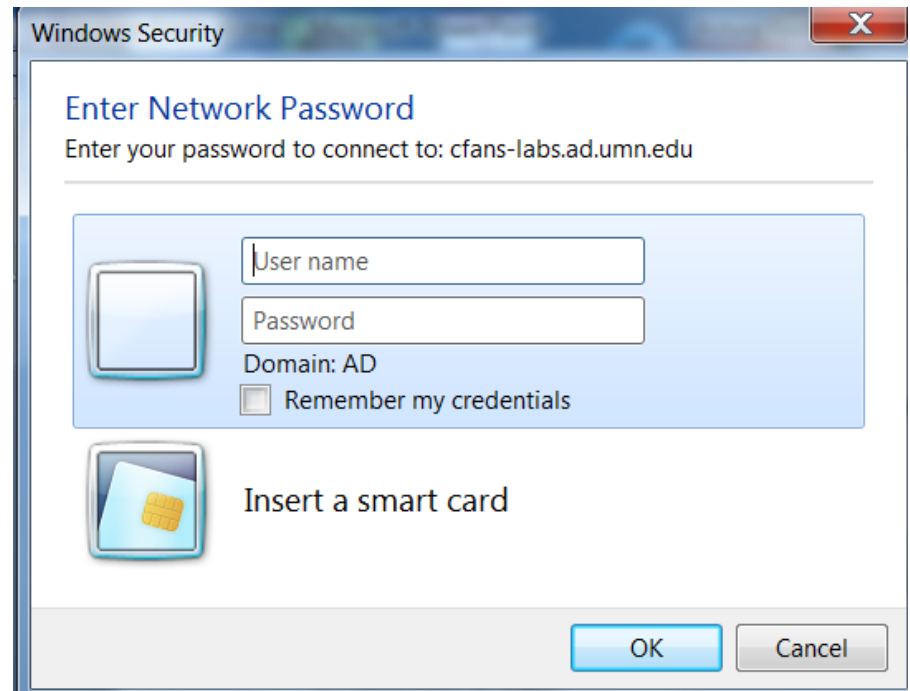
Then select Connect

Then fill in your UMN id and password, select OK





After installing the VPN software and establishing the VPN connection (logging in), then Use Windows Explorer to Map to a Network Drive (see above)



When prompted enter your username and password; Remember to use the format AD\username

File Edit View Bookmarks Insert Selection Tools Window Help

Georeferencing Layer: []

Spatial Analyst Layer: []

Editor Task: Create New Feature Target: []

Geostatistical Analyst

awthsTools [] [] []

Layers

Add Data

Look in: [\\files.umn.edu\cfans\labs](http://files.umn.edu/cfans/labs)

- ESPM3031_5031
- ESPM4295W
- ESPM5295
- ESPM5295_Share
- ESPMx031_SHARE
- ESRI_DATA
- FR1901
- FR3131
- FR3431_5431
- FR5131
- FRx131_SHARE

Name: []

Show of type: Datasets and Layers (*.lyr)

Connect to Folder

Choose the folder to which you want to connect:

[\\files.umn.edu\cfans\labs](http://files.umn.edu/cfans/labs)

- Desktop
- Network
- Libraries
- Andy Jenks
- Computer
 - Local Disk (C:)
 - DVD RW Drive (D:)
 - FreeAgent+ Drive (F:)
 - share on [\\files.umn.edu\cfans\labs](http://files.umn.edu/cfans/labs)

OK Cancel