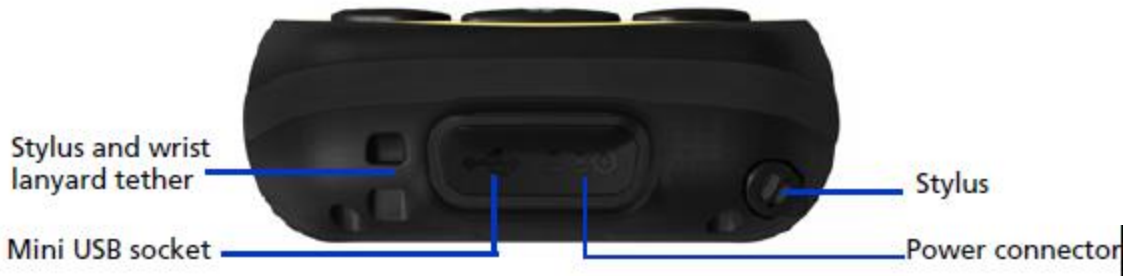


Juno 3B model



Juno 3B model (back and sides)



Juno 3B model battery

Inserting and removing the battery

To insert the battery into the handheld:

1. On the back of the handheld, turn the back cover lock counter-clockwise to unlock it. Pull the back cover toward you to remove it.
2. To insert the battery, angle the left side of the battery into the handheld first, with the label facing upwards. Press the battery flat until it clicks into place.
3. To replace the back cover, insert the bottom edge of the cover first, and then push it flat until the top clicks into place. Turn the lock clockwise to secure the back cover.



To remove the battery:

4. Remove the back cover of the handheld and then pull the right side of the battery towards you.

Juno 3B model

To turn on the Juno 3B, press the **POWER** key briefly (less than one second).

To turn off the Juno 3B or put the Juno 3B into Suspend mode, press the **POWER** key briefly (less than one second). The Juno 3B is placed in a very low power state, but Bluetooth and Wi-Fi may remain active.

To completely shut down the Juno 3B, press the **POWER** button until the **Power** menu appears and then tap **Shutdown**. All running applications are shut down and the Juno 3B is completely turned off.

Resetting Juno 3b

Performing a soft reset

A soft reset is similar to restarting a computer. A soft reset saves data and closes all open applications and then restarts the handheld. All data and settings are retained after a soft reset.

To perform a soft reset, use the tip of the stylus to lightly press the Reset button. Alternatively, press the **Power** button until the *Power* menu appears and then tap **Reset**.

Performing a hard reset

A hard reset retains settings and data that you have previously saved on the handheld. However, any unsaved data may be lost.

Note – *Perform a hard reset only if a soft reset does not resolve the problem.*

To perform a hard reset, press and hold the **Power** button and use the tip of the stylus to lightly press the Reset button.

Default Windows Screen & notes

Home screen

Provides access to the key functions on your handheld. Scroll, and tap any item to open it.



Title bar

Contains status icons for important system functions.

Start button

Tap to open the Start screen, where you can access programs and system controls.



Tile bar

Contains touchable tiles providing access to applications, menus, and notifications.

Start screen

Tap any item on the menu to open it.

Lock device

Tap to lock the screen. Once locked, you have multiple points of unlock entry depending

Connectivity icons

Tap either icon to access the Wireless Manager.

Pull-down list

Tap anywhere on the title bar to open the title bar pull-down list, where you can access connectivity controls (the Wireless Manager), battery information, time and date settings, and volume.



8:55

Sunday, February 22, 2015

Phone off
Wi-Fi: Off

Bluetooth: Off



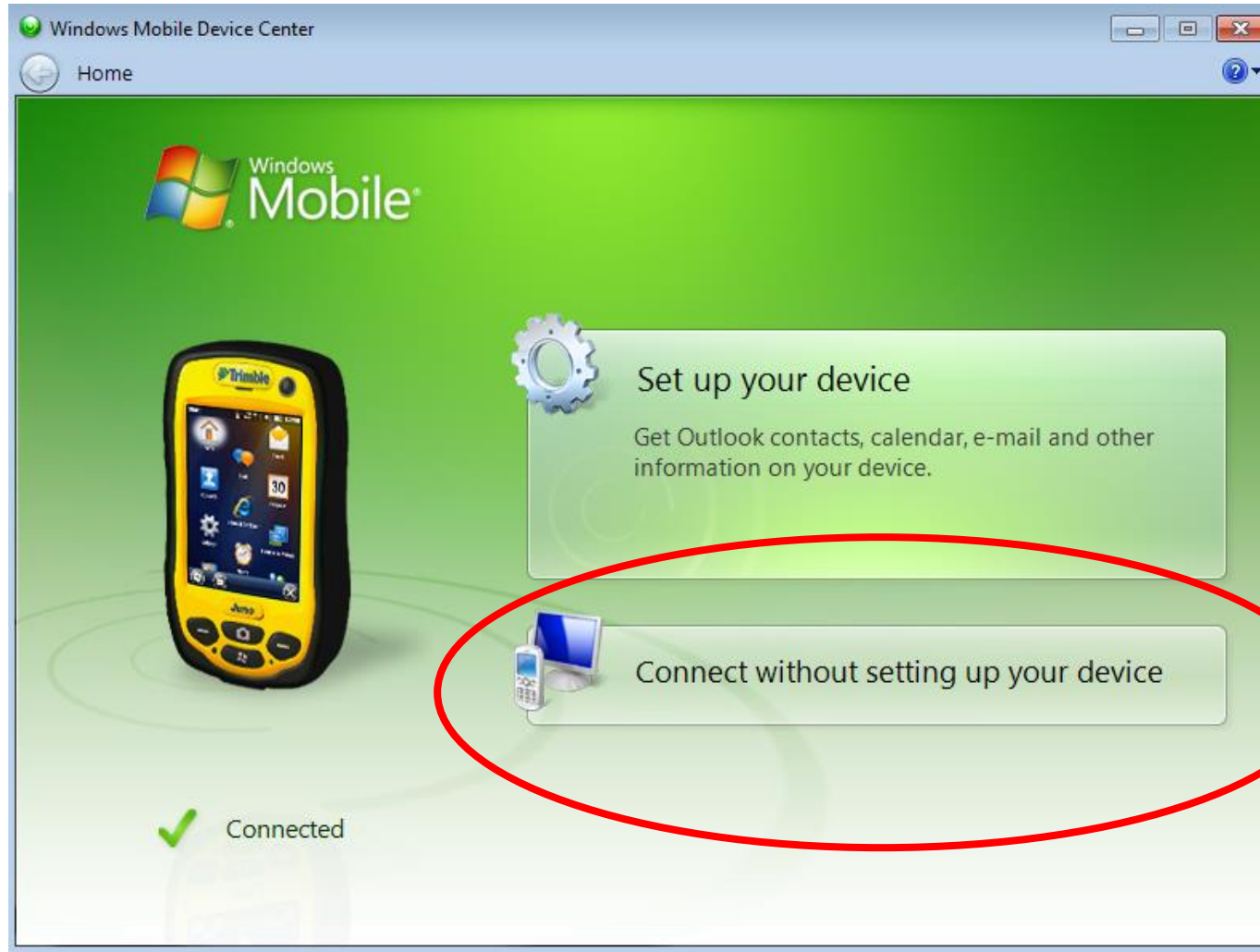
Phone

Contacts



Use Windows Mobile Device Center
(Windows 7 or Windows 8) to connect the device to the
computer

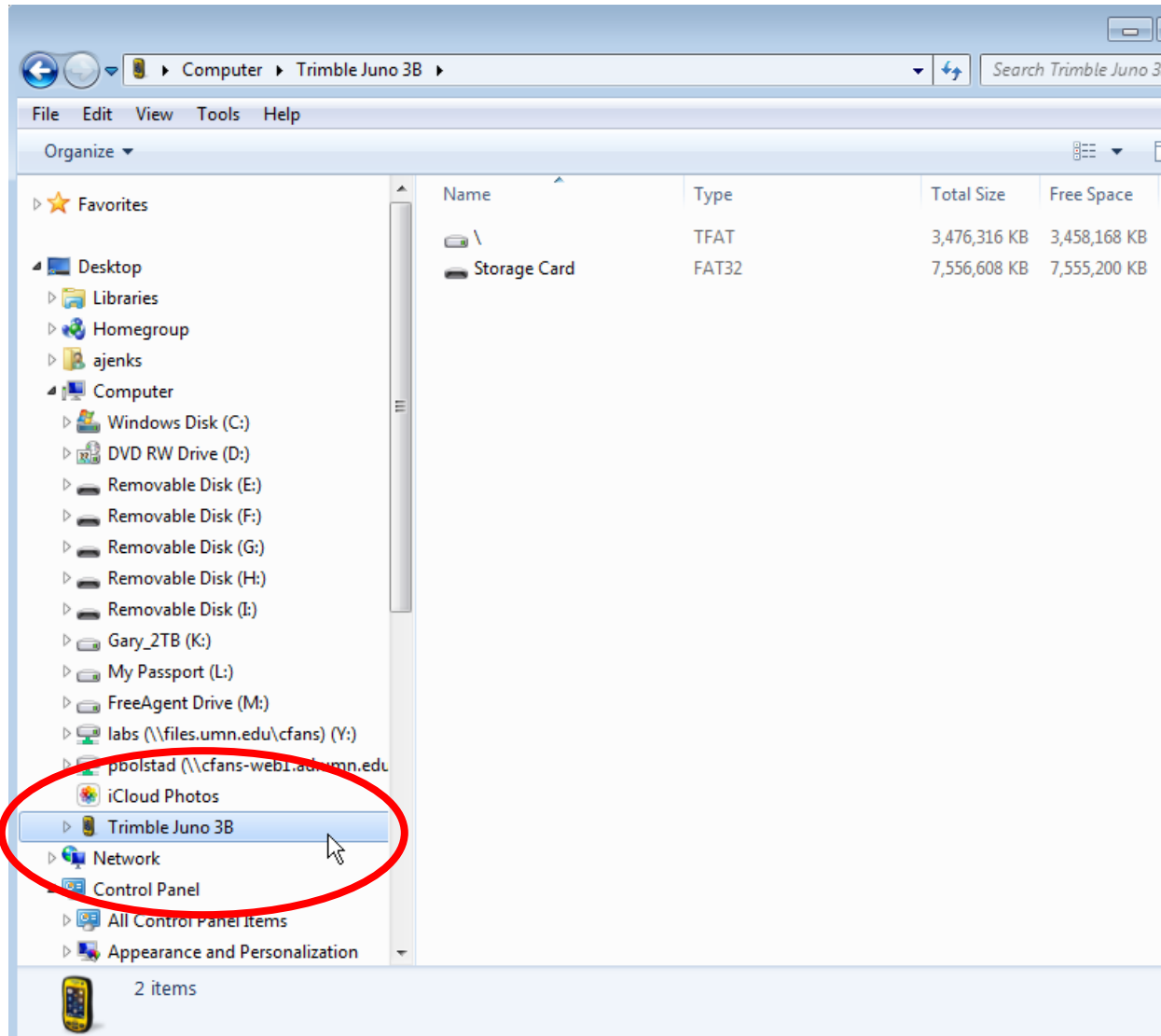
Plug in the mobile unit



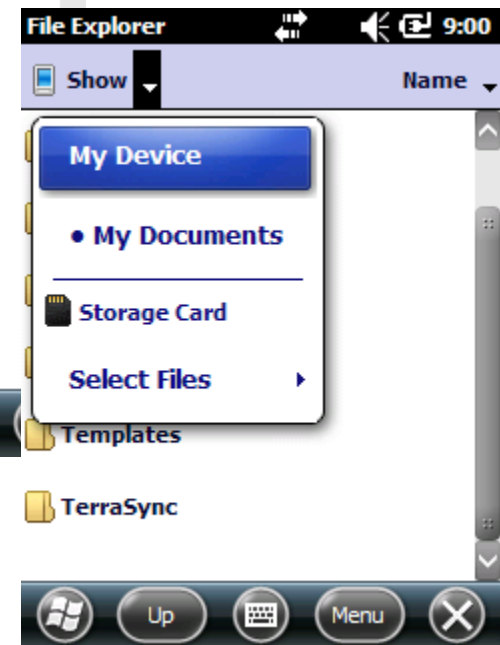
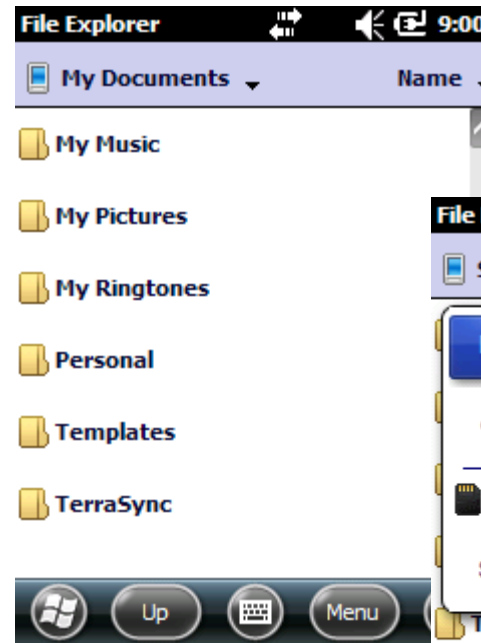
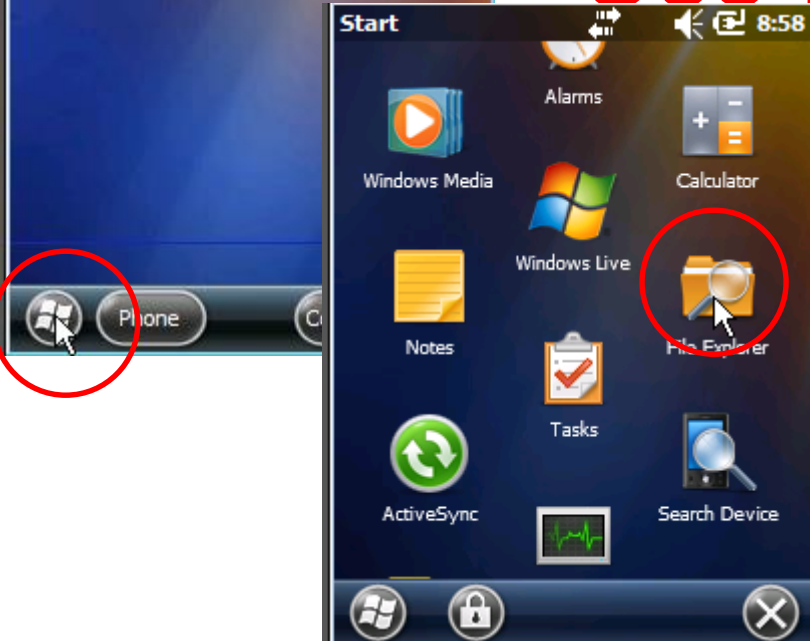
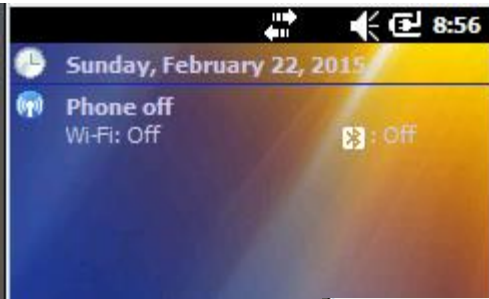
Minimize this Window



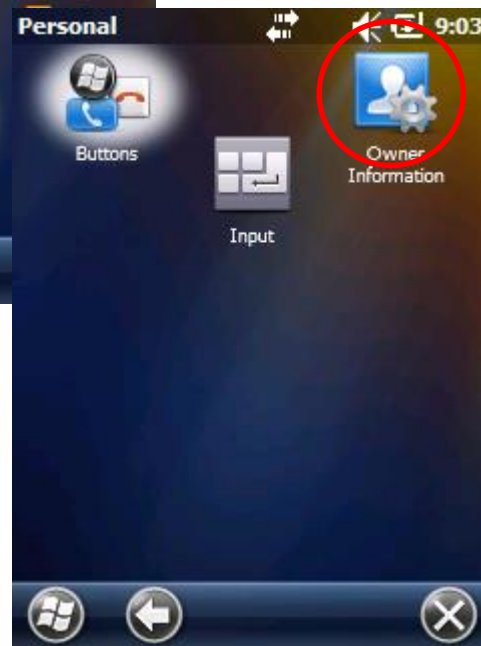
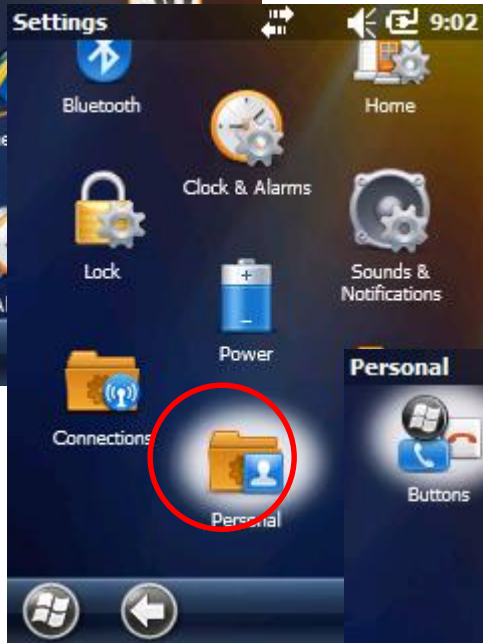
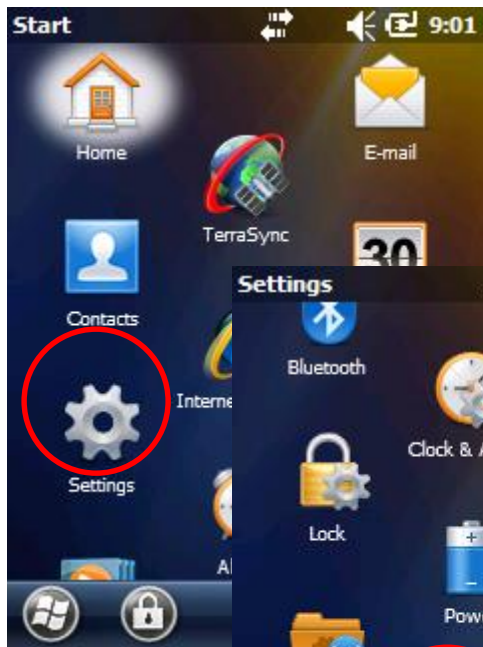
Use Windows Explorer to check out files on unit



Now look at SB screens Use File Explorer



Put your name as "owner"

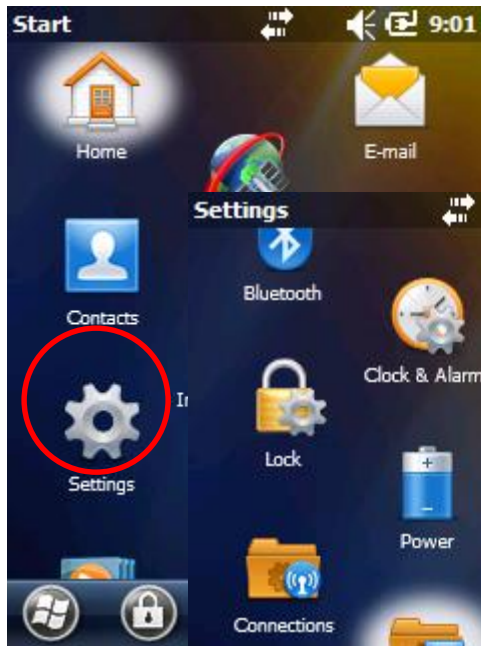


A screenshot of the 'Owner Information' form in the Windows Phone settings. The title bar shows 'Owner Information' and the time is 9:09. The form has a navigation bar with 'Notes' on either side of 'Identification'. The fields are as follows:

Name:	Andy Jenks
Company:	
Address:	University of Minnesota
Telephone:	(651) 387-9600
E-mail:	ajenks@umn.edu



Update the unit number if necessary



Windows® Embedded Handheld 6.5 Professional

CE OS 5.2.29044 (Build 29044.5.3.12)

© 2009 Microsoft Corporation.
All rights reserved.

This computer program is protected by
U.S. and international copyright laws.

Processor: Samsung

Memory: 196.65 M

Expansion slot: In use



Your device uses this information to identify itself to other computers. Enter a name that starts with a letter and contains the characters _, A-Z, or 0-9.

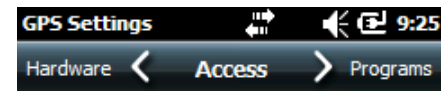
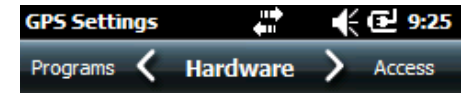
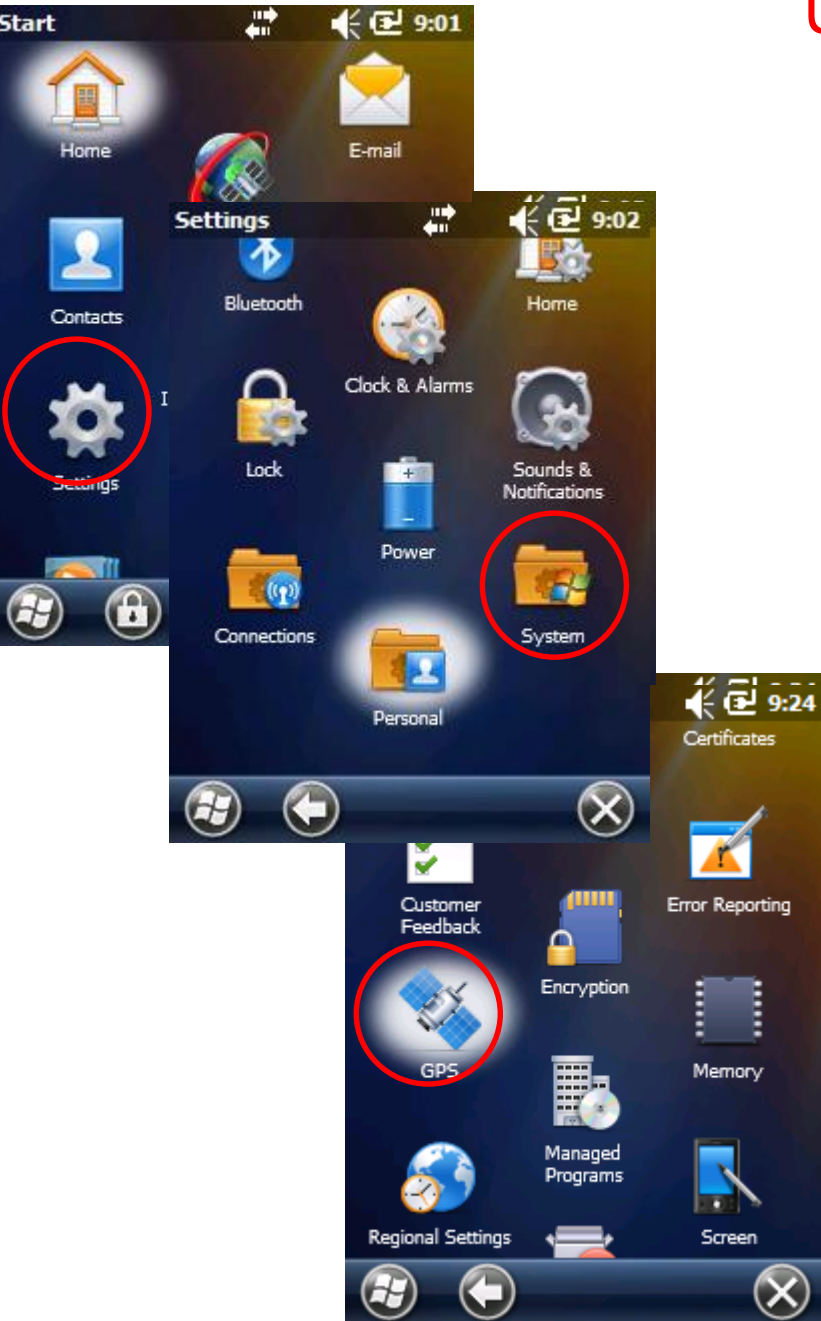
Device name:

Juno41

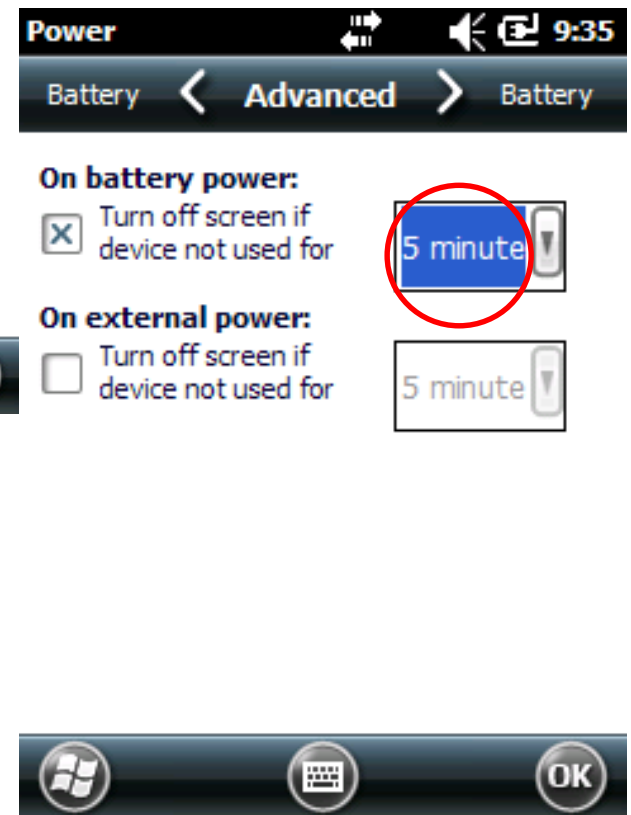
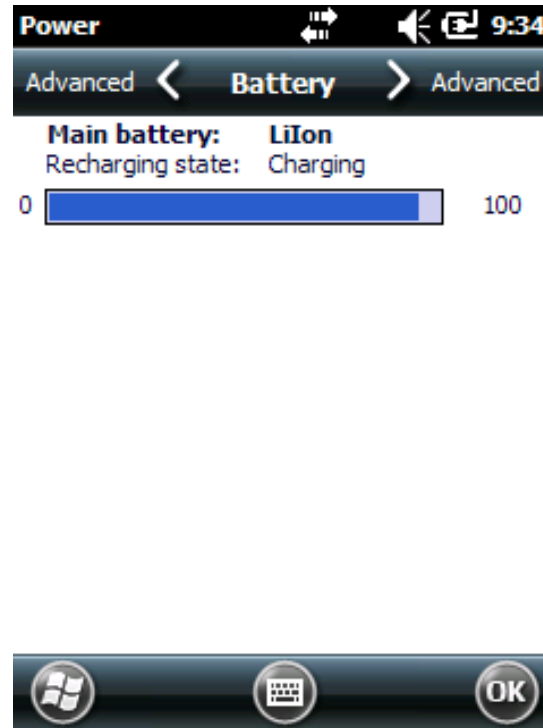
Description:




Update GPS settings if necessary




Update Battery settings if necessary



Using the on-screen keyboard

To activate the on-screen keyboard, tap the keyboard icon  on the Input Panel displayed in the menu bar. The on-screen keyboard appears.

To enter text, tap the appropriate keys on the on-screen keyboard. When you finish entering text in a field, tap  to accept the text you have entered and then move to the next field.

To hide the keyboard, tap the keyboard icon again.



Input panel showing keyboard icon

Wireless

<http://www1.umn.edu/wireless/>

<http://www1.umn.edu/wireless/information/setup/winpocketpc/index.html>

Access S: from other Campus or Home (use VPN)

General Info

<http://www.oit.umn.edu/vpn/index.htm>

Downloads & Guides

Sign in to umn.edu and then use this link:

<https://www.oit.umn.edu/vpn/downloads-guides/index.htm>

Setup Email

<http://www.oit.umn.edu/email/setup-guides/index.htm>