

***SB model***



External GPS  
antenna connector  
Camera lens  
Power LED  
Power button



Stylus holder  
Reset button  
Zoom  
SIM card slot  
(SC version)



***SB model***

MicroSD  
card slot  
Camera button

Lanyard tether point

Headset  
connector



Mini USB socket

Power  
Connector

***SB model***

Lens  
Preview mirror



Zoom



Camera button. Press to:  
- start camera application  
- take photo/record video



***SB model***

## Resetting the handheld

If the screen on the handheld is blank, the handheld has turned off. Press the **Power** button to turn on the handheld.

If the handheld stops responding to the stylus, or if it does not respond when you press any of the keypad buttons, you may need to reset it. First, try a soft reset. If the handheld does not respond, perform a hard reset.

You can also reset the handheld to its factory default settings.

*All models*

### Performing a soft reset



Figure 2.6 Performing a soft reset

A soft reset is similar to rebooting a computer. A soft reset saves data and closes all open applications and then restarts the handheld. All data and settings are retained after a soft reset.

To perform a soft reset, use the tip of the stylus to lightly press the **Reset** button beside the SD card slot on the handheld.

### Performing a hard reset

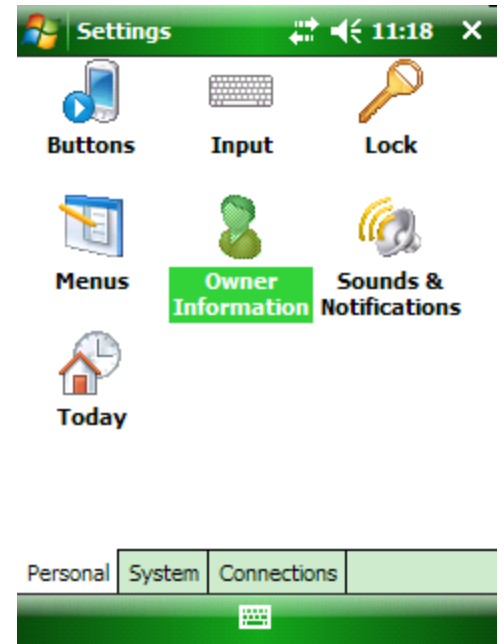
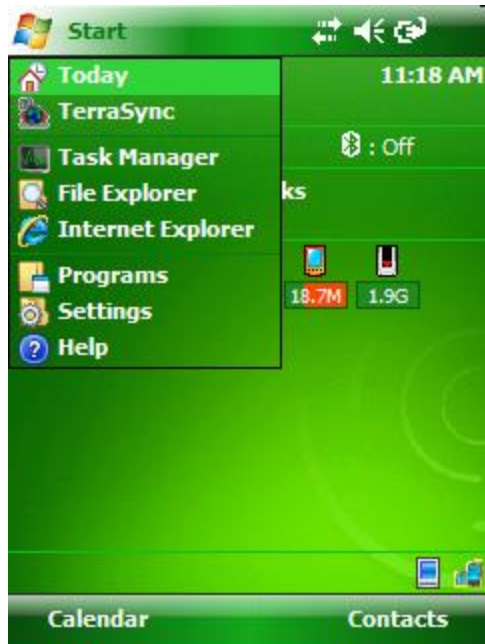


Figure 2.7 Performing a hard reset

A hard reset retains settings and data that you have previously saved on the handheld. However, any unsaved data may be lost.

*Note – Perform a hard reset only if performing a soft reset does not resolve the problem.*

To perform a hard reset, press and hold the **Power** button as you use the tip of the stylus to lightly press the **Reset** button beside the SD card slot on the handheld.

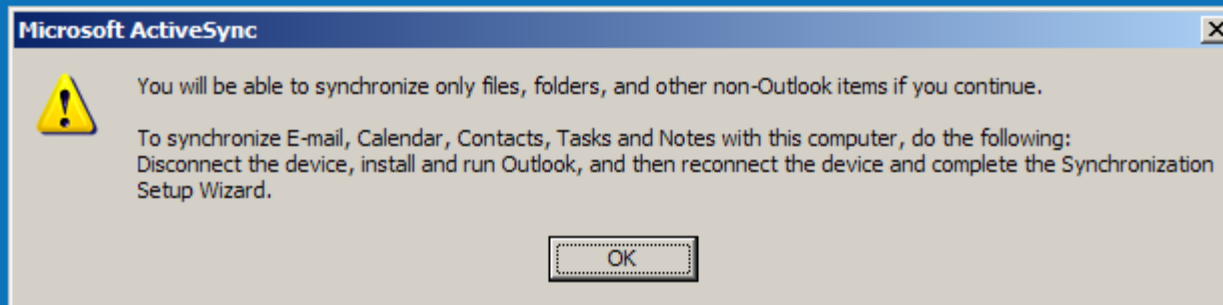


Use ActiveSync or Windows Mobile Device Center (Vista, Windows 7) to connect the device to the computer

# Plug in the mobile unit

# XP

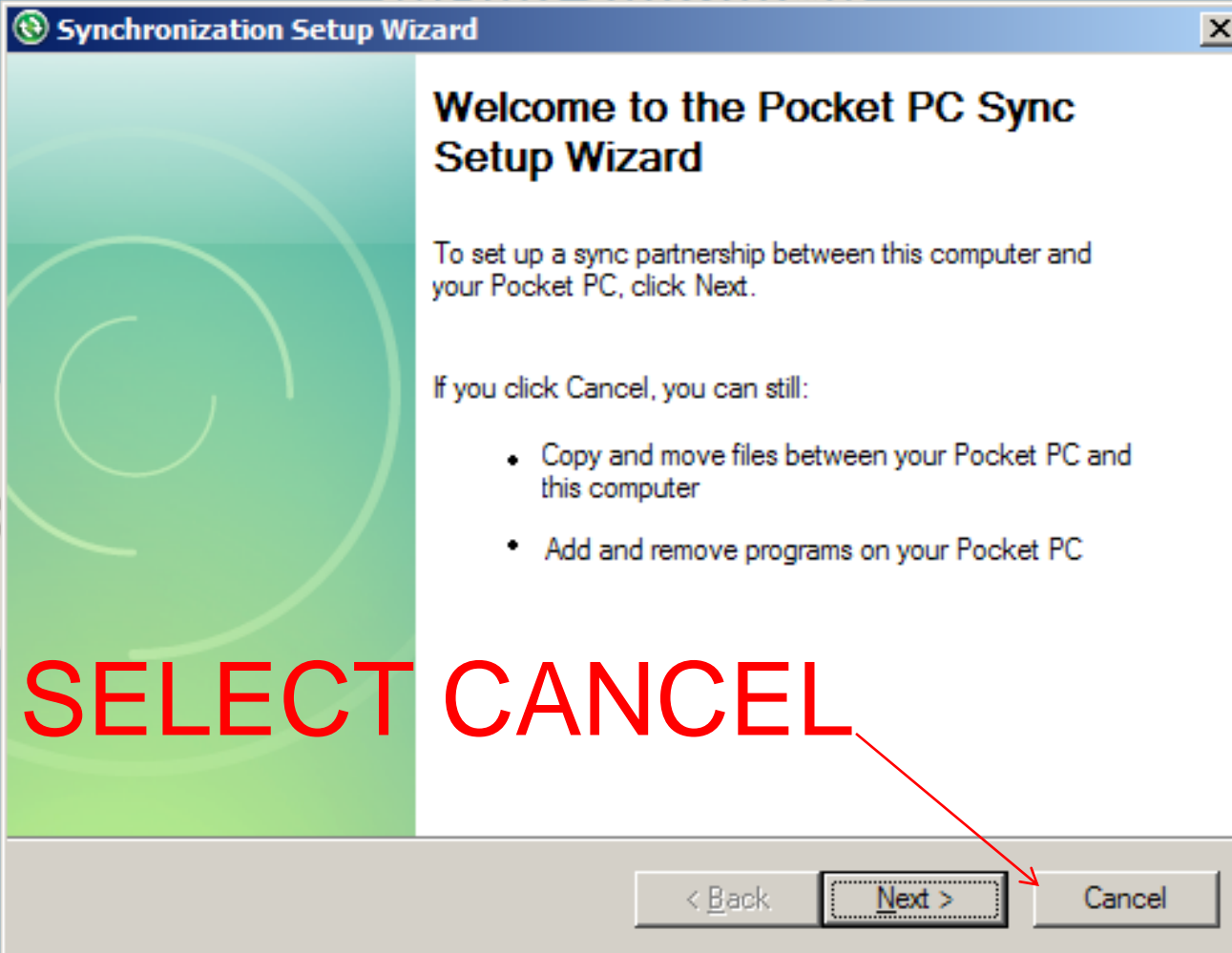
**Do not shutdown**





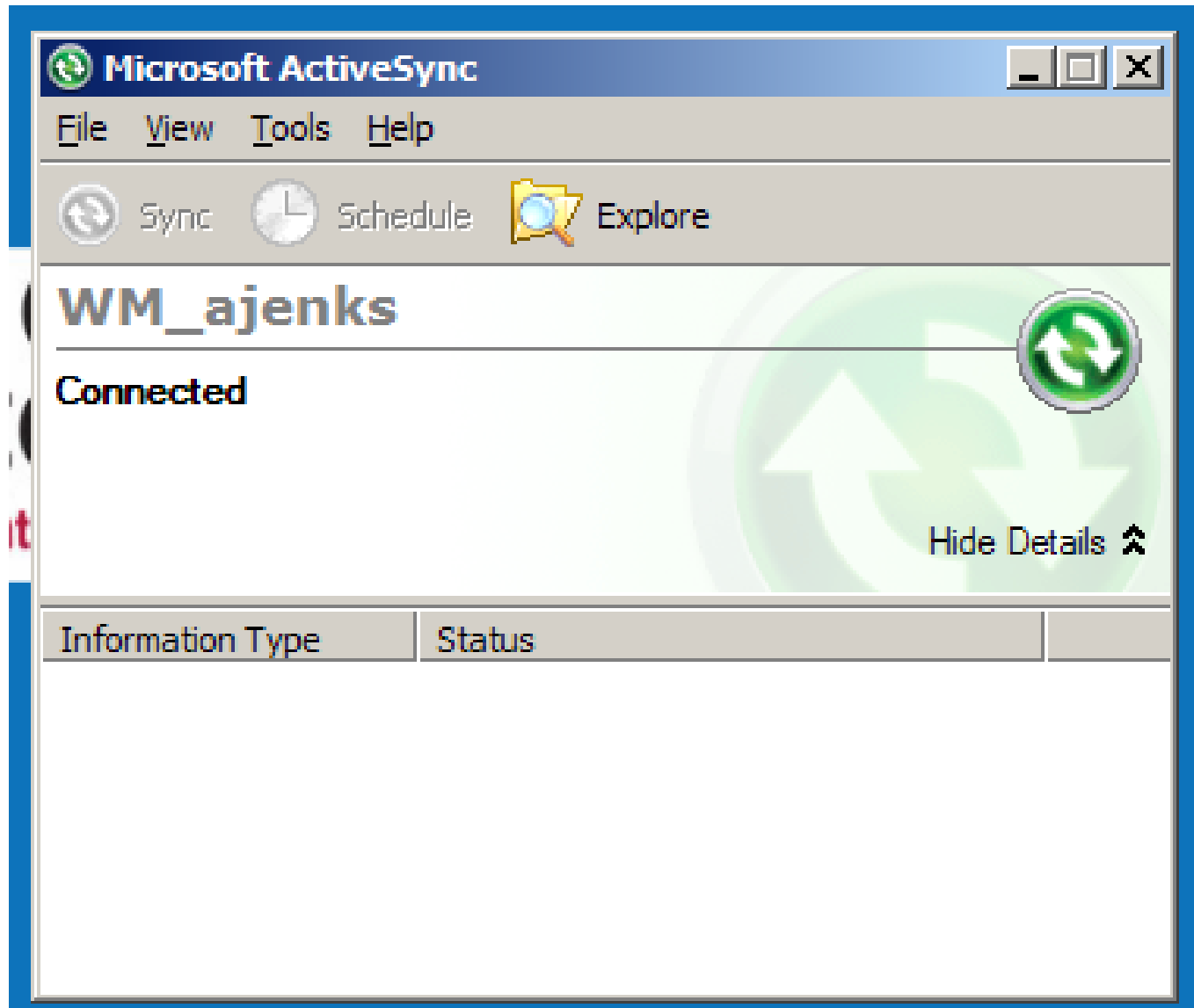
Do not shutdown

XP

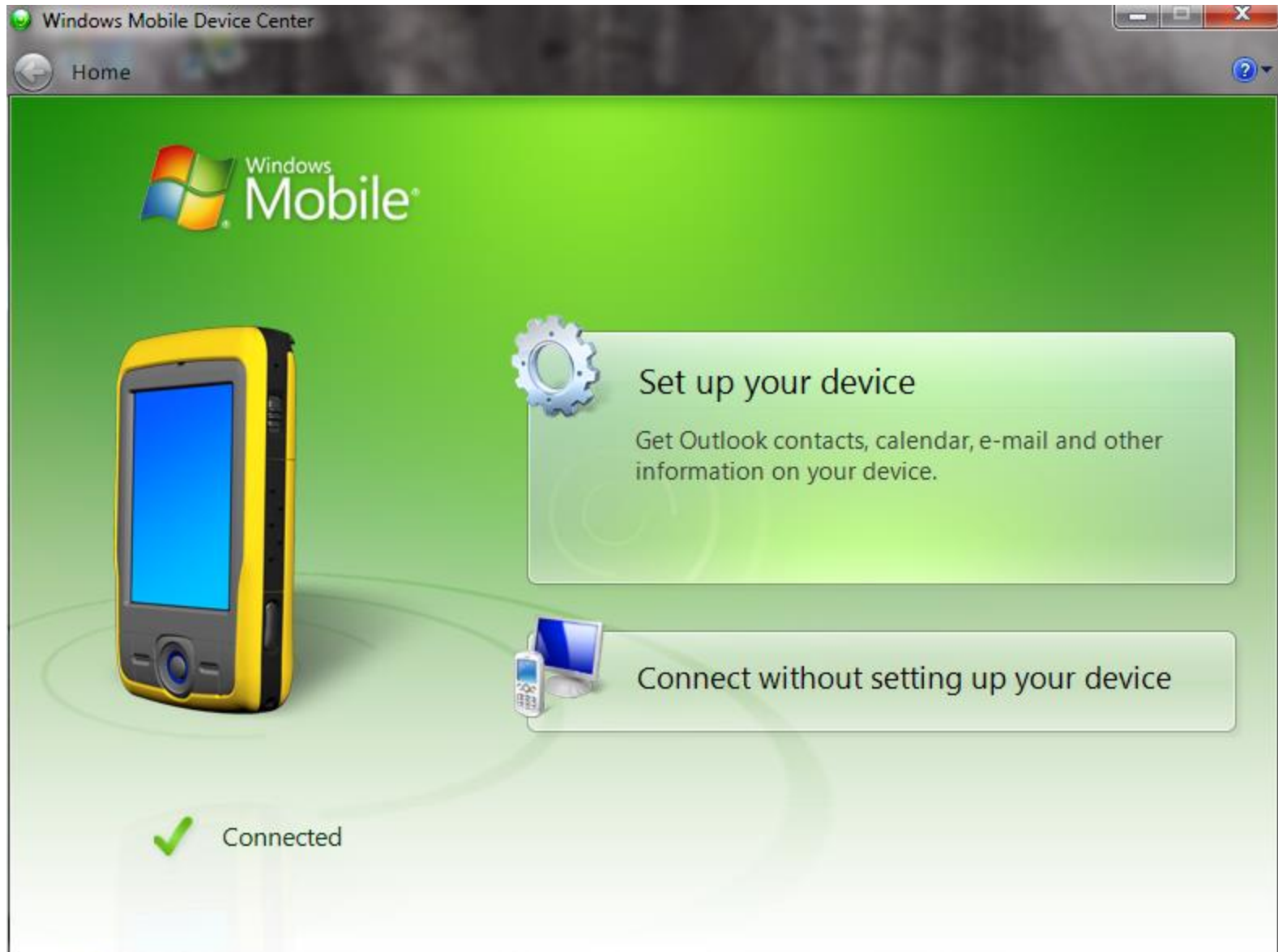


Should see this screen (select Explore)

XP



# WINDOWS 7



# WINDOWS 7



Start 2:25 AM

**Today**

- File Explorer
- TerraSync
- Capture Screen Utility
- Messaging
- Internet Explorer
- Excel Mobile
- Word Mobile

Programs

Settings

Calendar Contacts

File Explorer 1:04

My Device Name

Application D...

- ConnMgr
- Documents a...
- My Documents
- Program Files
- SD-MMC card
- Temp
- Windows

Name	Date	Size
cemail	2/26/09	192K
Microsoft	9/4/08	434B
Microsoft .NET...	9/4/08	12.6K
mxip_initdb	9/10/08	32.0K
mxip_lang	2/26/09	28.0K
mxip_notifv	2/26/09	132K

Up Menu

File Explorer 1:05

Show Name

My Device

- SD-MMC card
- My Device

Name	Date	Size
SD-MMC card	2/26/09	1.30K
My Device	2/26/09	114B
A022609A	2/26/09	64B
A022609A	2/26/09	64B
A022609A	2/26/09	110B
A022609A	2/26/09	77.3K
A022609A	2/26/09	2.85K
Blank_Accura...	9/11/08	21.0K
CapScr0001	2/24/09	225K
CapScr0002	2/24/09	225K
CapScr0003	2/24/09	225K
CapScr0004	2/24/09	225K

Up Menu

Owner Information

Name: Andrew Jenks  
 Company: University of Minnesota  
 Address: 1530 Cleveland Ave N  
 St Paul MN 55107  
 Telephone: (651) 387-9600  
 E-mail: ajenks@umn.edu

Identification	Notes	Options	
123	1	2	3
4	5	6	7
8	9	0	- =
Tab	q	w	e
r	t	y	u
i	o	p	[ ]
CAP	a	s	d
f	g	h	j
k	l	;	'
Shift	z	x	c
v	b	n	m
,	.	/	↵
Ctl	á	ü	` \
			↓
			↑
			←
			→


Owner Information


When the device is turned on, display:

- Identification information
- Notes

Identification	Notes	Options	

## Using the on-screen keyboard

To activate the on-screen keyboard, tap the keyboard icon  on the Input Panel displayed in the menu bar. The on-screen keyboard appears.

To enter text, tap the appropriate keys on the on-screen keyboard. When you finish entering text in a field, tap  to accept the text you have entered and then move to the next field.

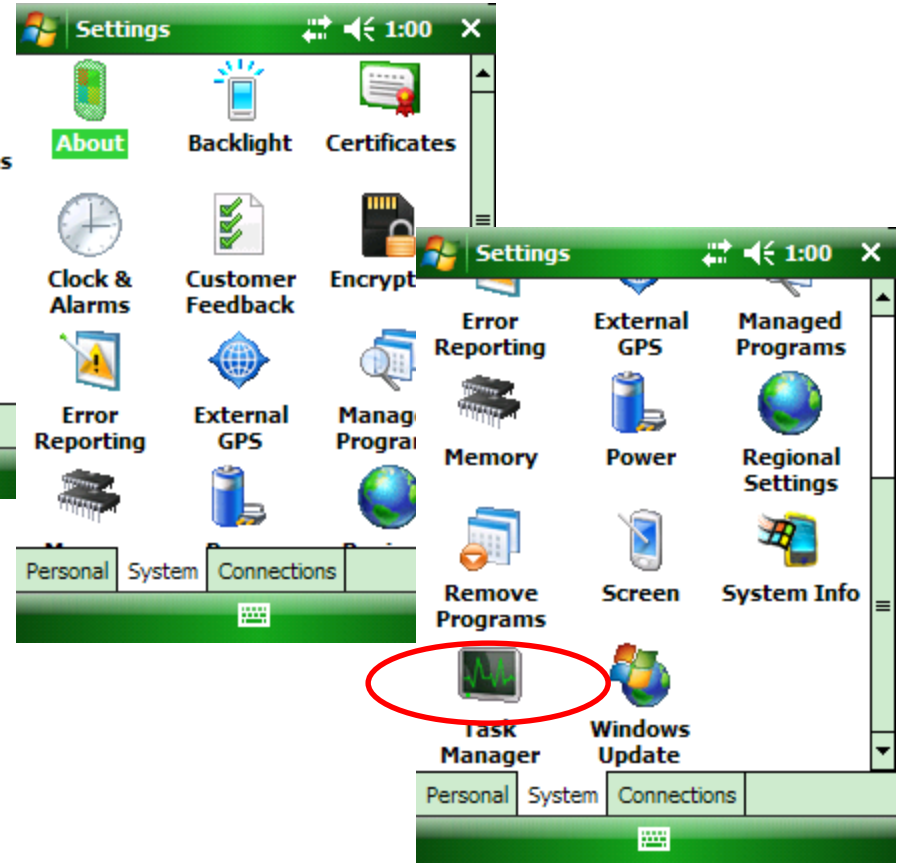
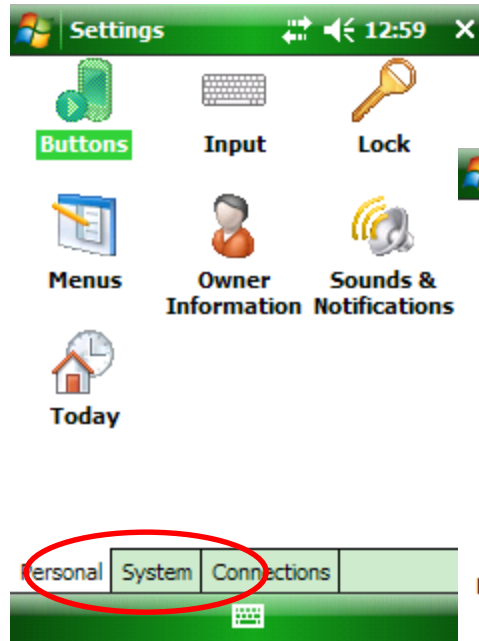
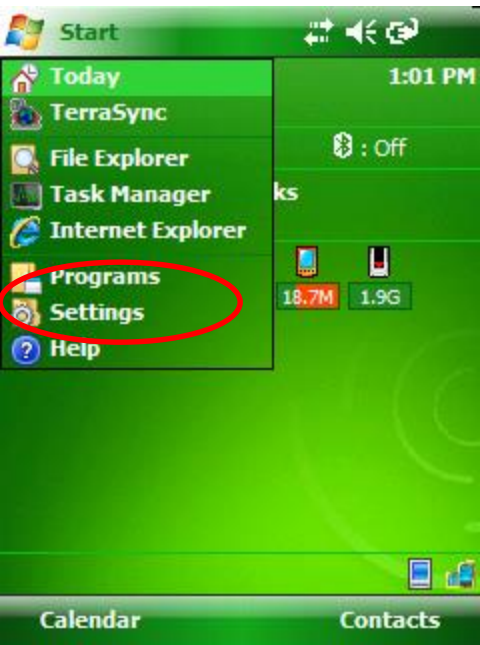
To hide the keyboard, tap the keyboard icon again.



Input panel showing keyboard icon

Juno SB use Settings >>  
System >> Task Manager

then select the program  
you wish to close and  
select "End Task"





Wireless

<http://www1.umn.edu/wireless/>

<http://www1.umn.edu/wireless/information/setup/winpocketpc/index.html>

Access S: from other Campus or Home (use VPN)

<http://oit.cfans.umn.edu/RemoteConnectAD.html>

Setup Email

<http://www1.umn.edu/adcs/guides/email/winmobile5/>

Or <http://www.oit.umn.edu/email/setup-guides/index.htm>