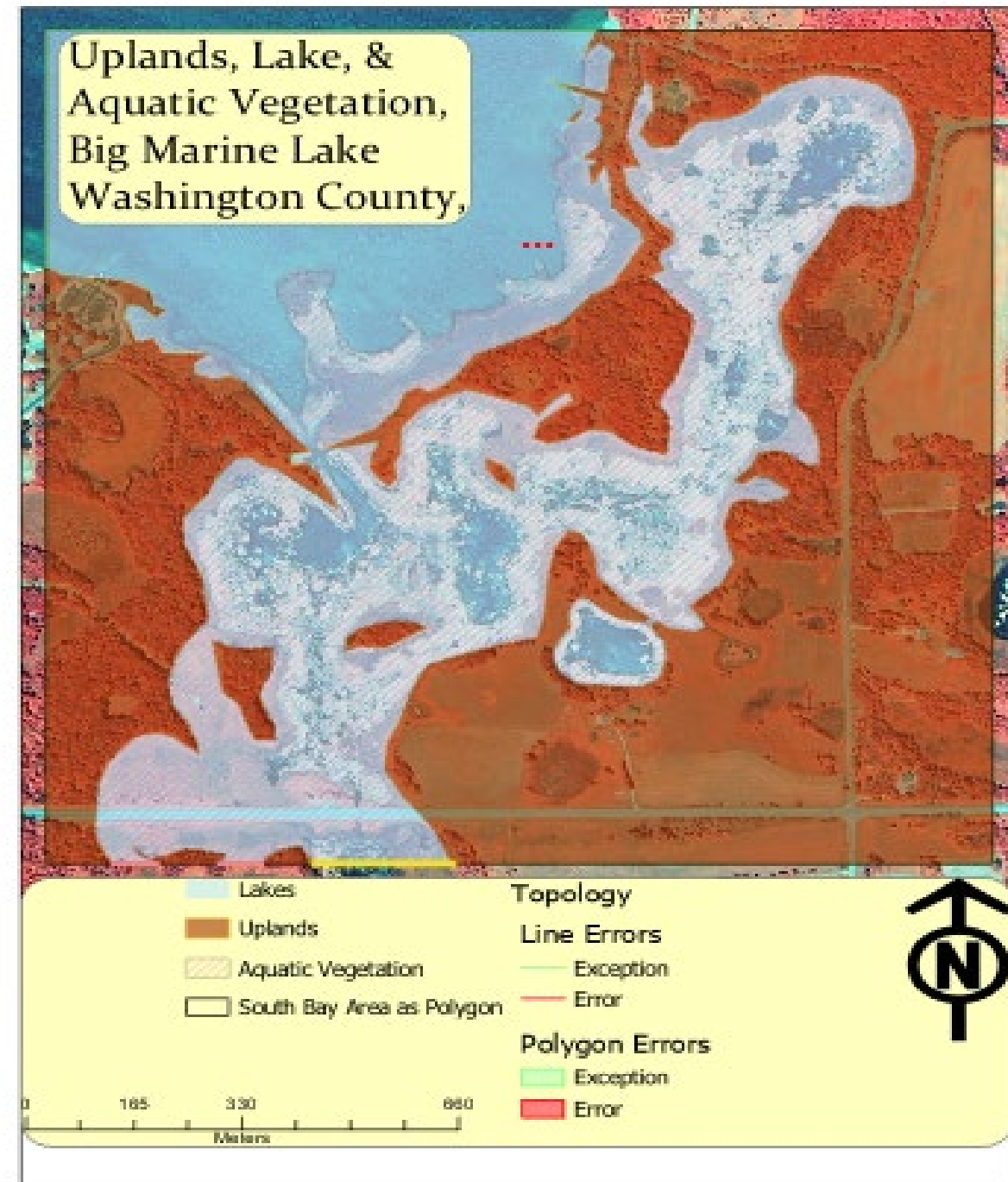


# Lab 4

## Advanced Editing and Topology

*This lab builds upon the concepts covered in Lab 1 (creating a GeoDataBase) and Lab 3 (digitizing). Refer back to Lab 1 and Lab 3 as needed. If you struggled through earlier labs and “can’t remember” what you did, you would be well advised to repeat those steps from earlier labs; the best way to learn these lab skills is **REPETITION**.*



# Lab 4 is more complicated than the previous labs.

## Advice:

- You should read this **entire lab** at least once before beginning.
- Study carefully the instructions to 1<sup>st</sup> learn how to recognize the difference between water and dry land.
- This lab classifies dry land, called “Uplands” and water, called “Lakes”; then classifies a “aquatic vegetation” layer which is on top (covering) some of the lake layer.
- Finally all layers are to be topologically correct: meaning no gaps and all polygons follow the rules about when they “should” or “should not” overlap; then when they are supposed to overlap, the boundaries must line up.

# NOTE:

The Lab starts with a practice area in southern France; Besset data is in Lab4\Lab4AP.gdb

The example shows you about topology

*(also see the text book for more about topological concepts)*

There is NO TURN IN for the practice Besset exercise.