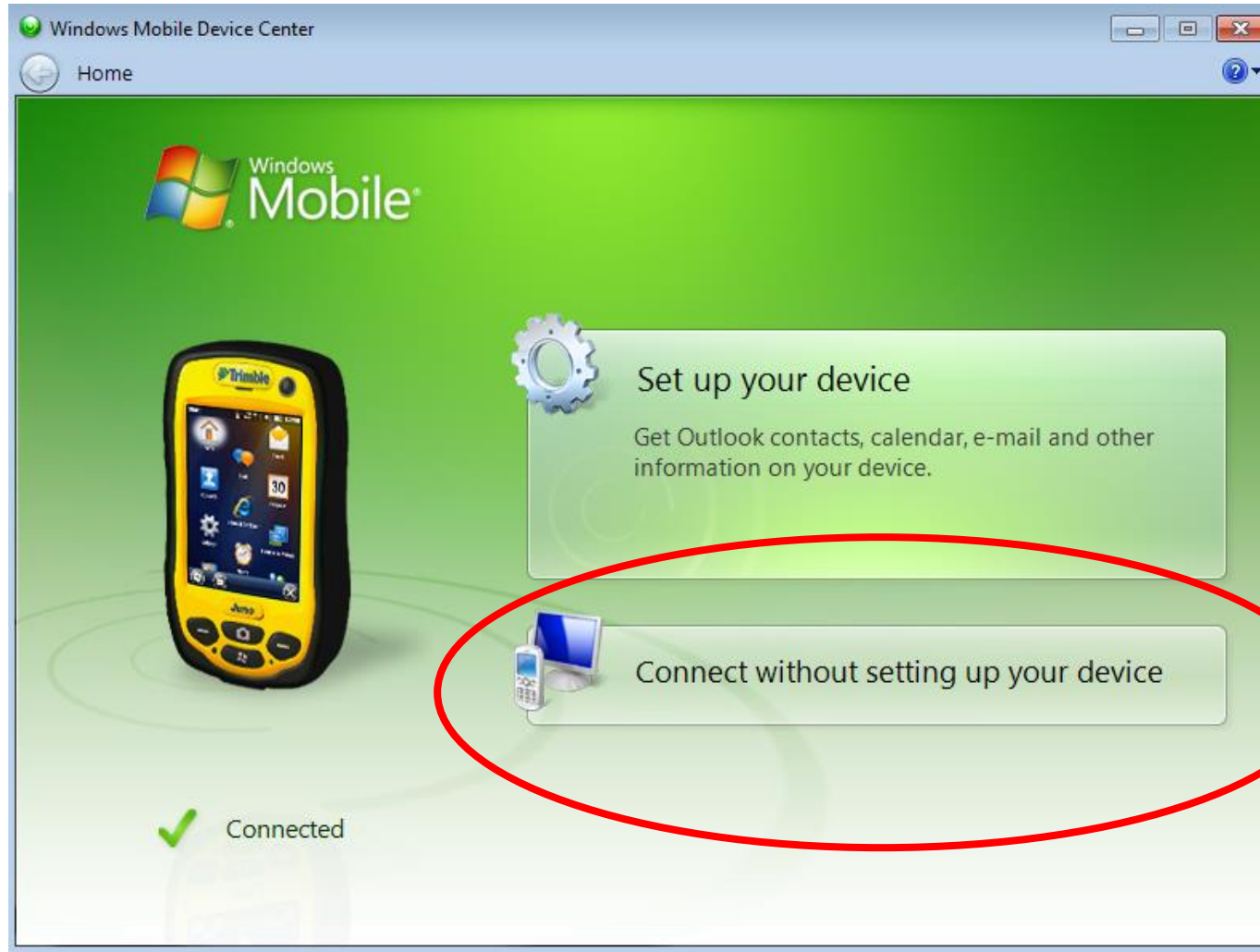
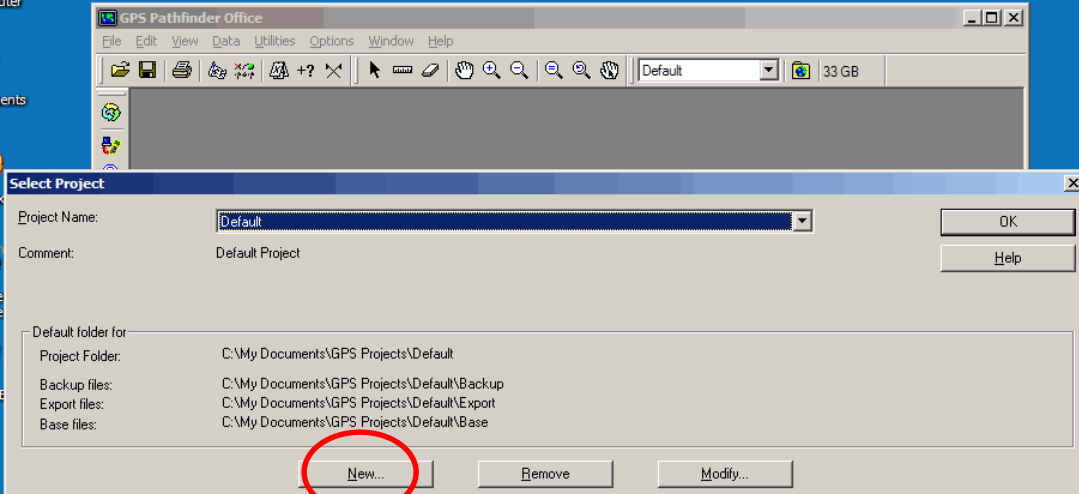


Plug in the mobile unit

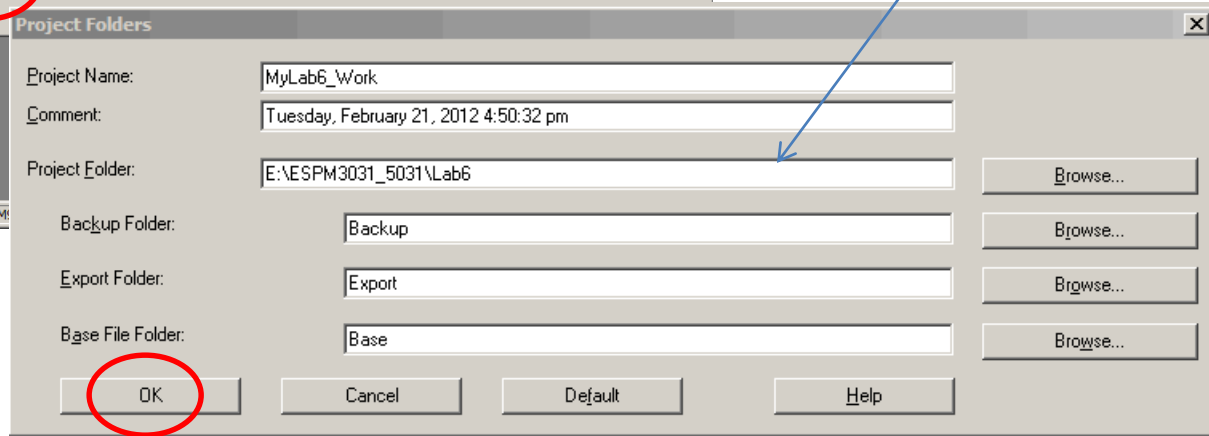


Minimize this Window

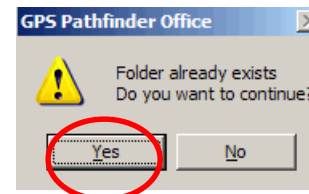




Fill in where you want your data to be stored

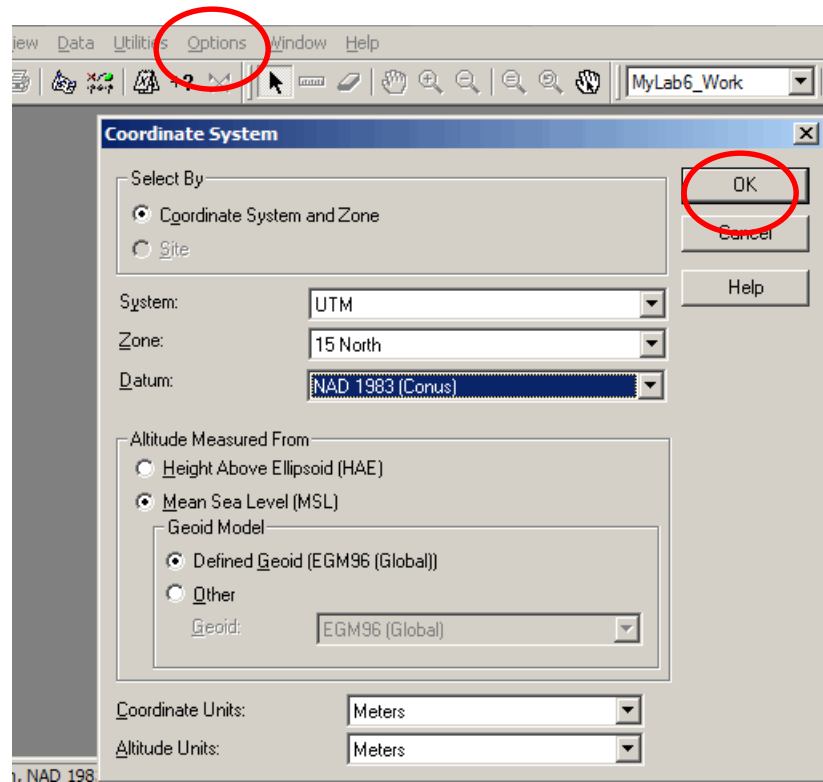


STARTING PATHFINDER OFFICE

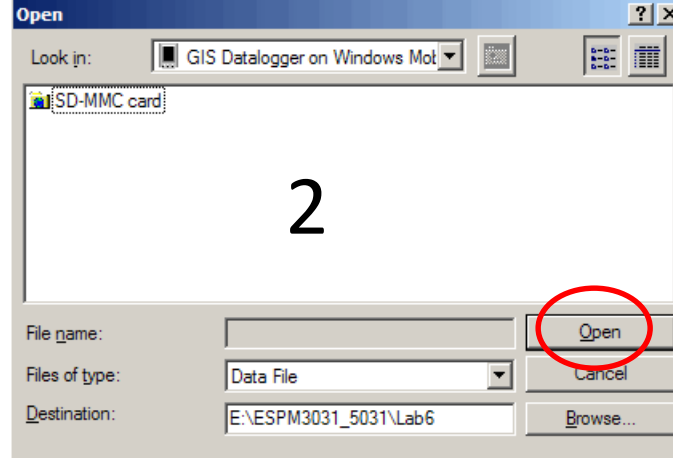
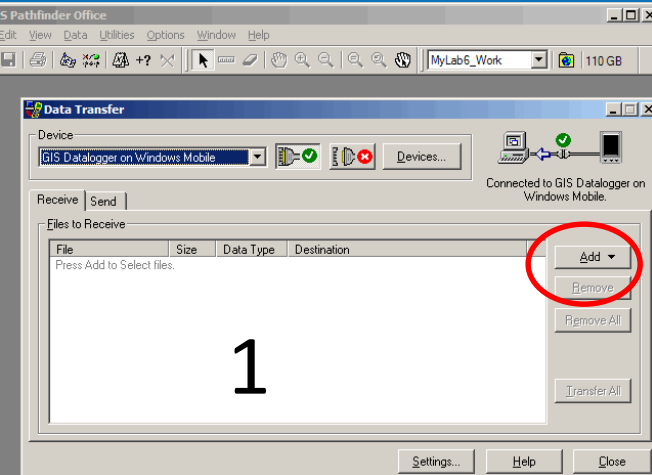


Setting the coordinate system

Use Options at the main Toolbar

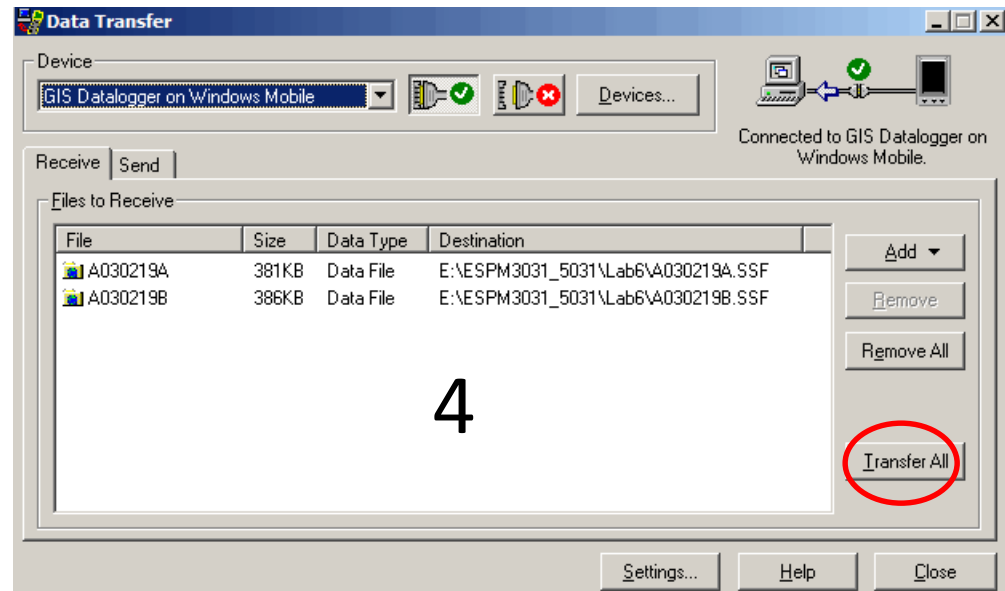
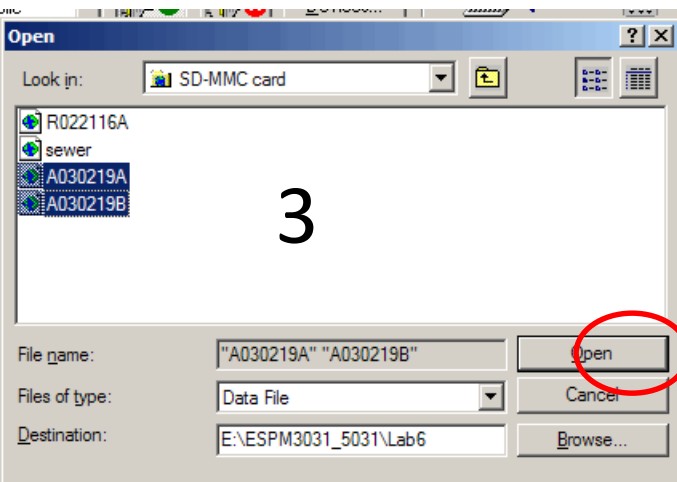


Note your datum may need to be CORS96 to match more accurate data layers.



Data Transfer to or from computer

Use Utilities at the main Toolbar



Select SSF files to correct

R022712B.SSF
R022712A.SSF

1

Start Time: 02/27/08 12:37:42
End Time: 02/27/08 12:42:11
Folder: E:\ESPM3031_Lab1
Positions: 95
Collected with H-Star receiver: No

< Back Next >

Differential Correction Wizard

Processing Type

Automatic Carrier and Code Processing (Recommended)
 Code Processing Only
 Carrier Processing Only

H-Star Processing

Use multiple base providers
 Use a single base provider

2

< Back Next >

Differential Correction Wizard

Correct Settings

Output corrected positions only
Smart automatic rover filtering
Re-correct real-time positions

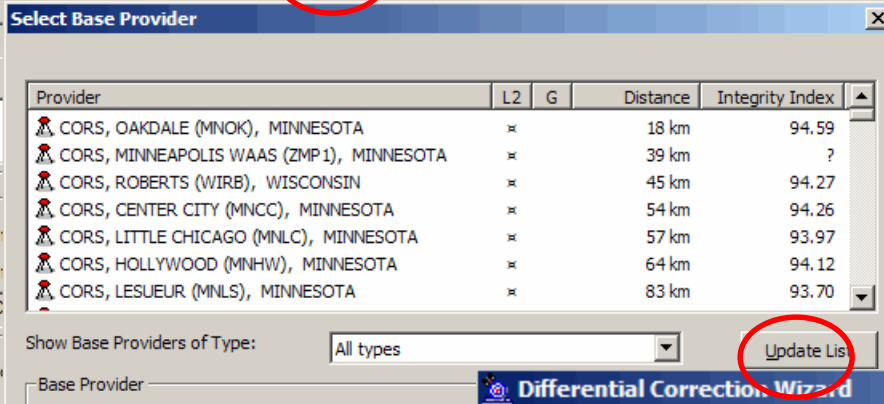
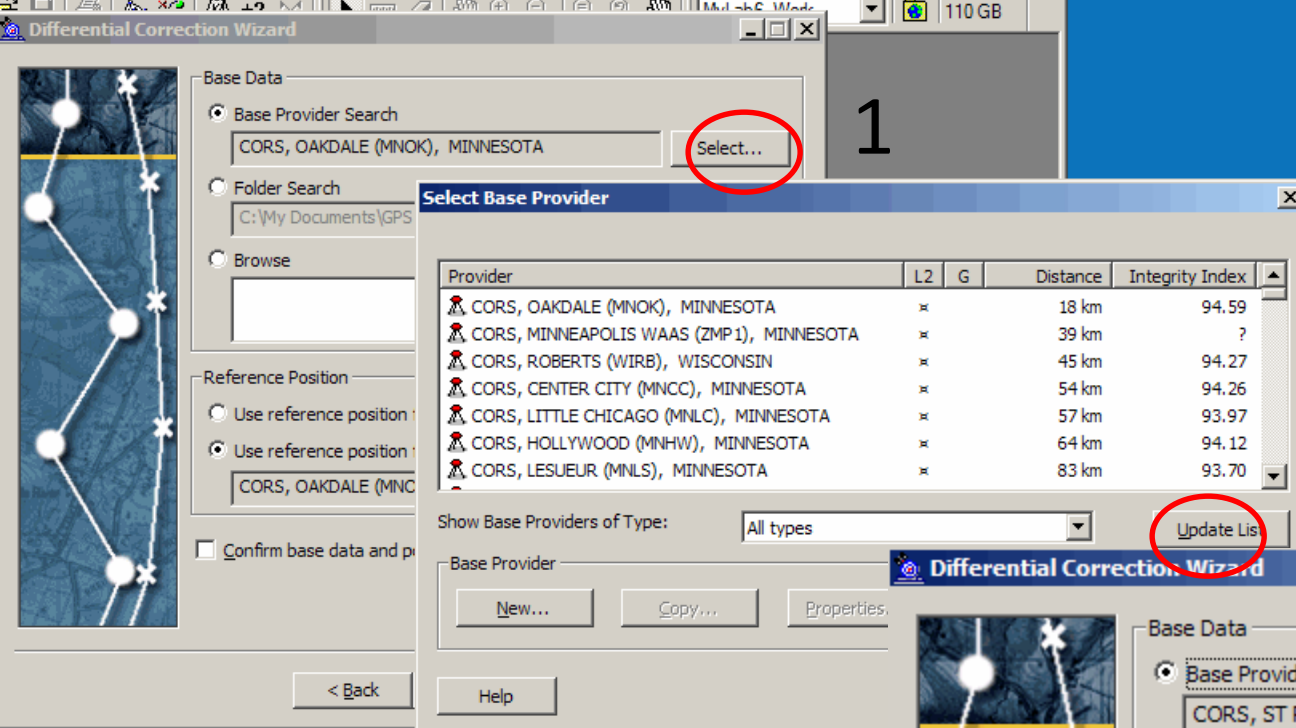
Change...

< Back Next > Cancel Help

3

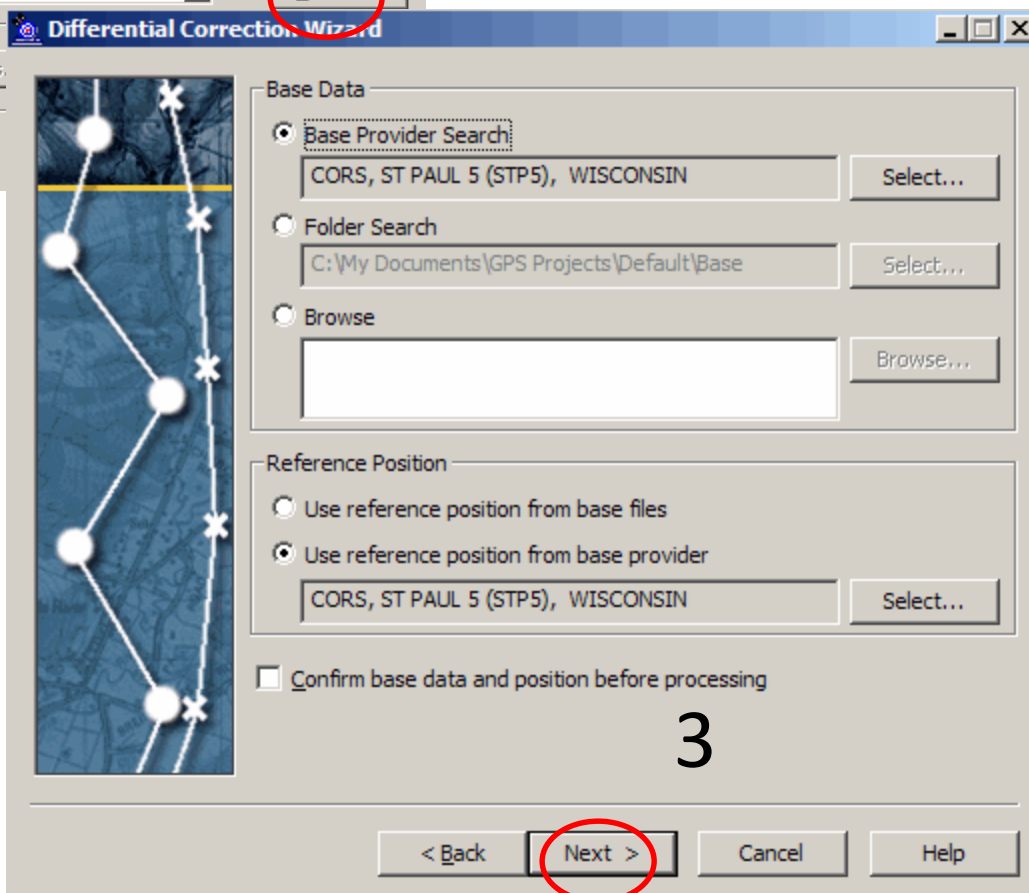
Differential Correction

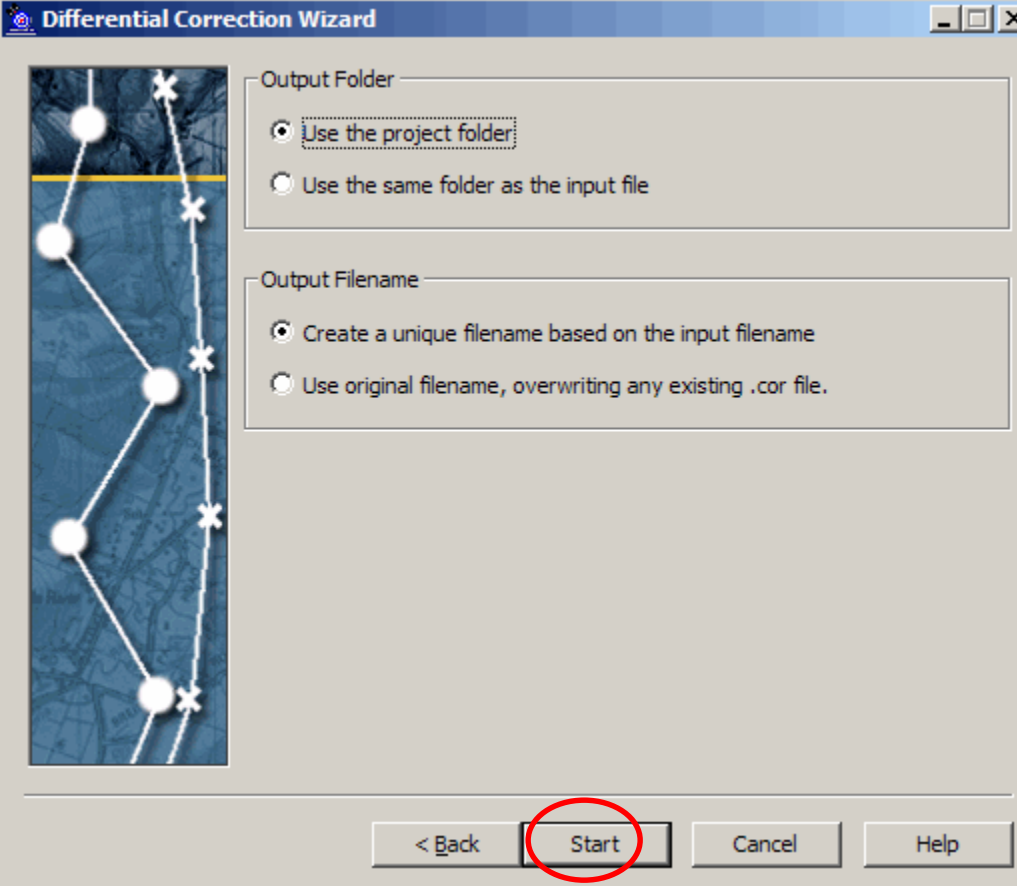
Use Utilities at the main Toolbar



Provider	L2	G	Distance	Integrity Index
CORS, OAKDALE (MNOK), MINNESOTA	x		18 km	94.59
CORS, MINNEAPOLIS WAAS (ZMP1), MINNESOTA	x		39 km	?
CORS, ROBERTS (WIRB), WISCONSIN	x		45 km	94.27
CORS, CENTER CITY (MNCC), MINNESOTA	x		54 km	94.26
CORS, LITTLE CHICAGO (MNLC), MINNESOTA	x		57 km	93.97
CORS, HOLLYWOOD (MNHV), MINNESOTA	x		64 km	94.12
CORS, LESUEUR (MNL5), MINNESOTA	x		83 km	93.70

Select the nearest site. You may have to try several as some might have missed your times or dates

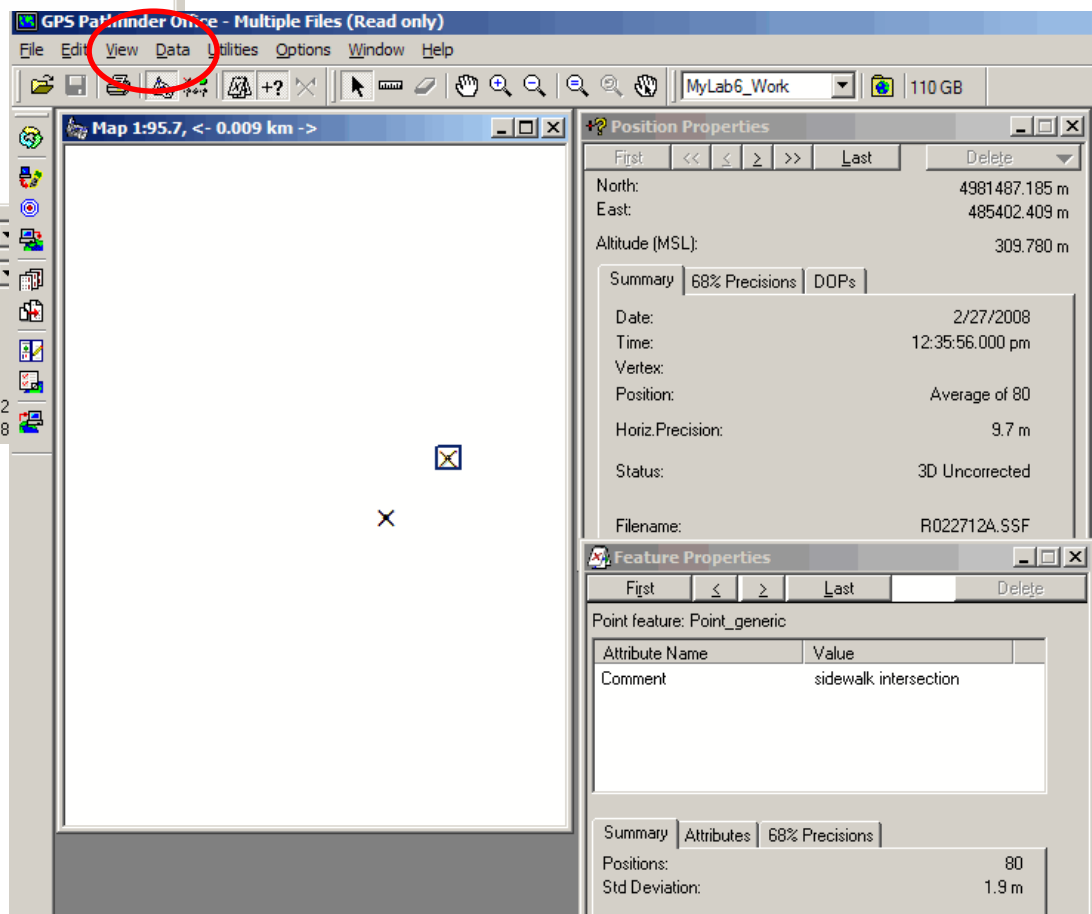
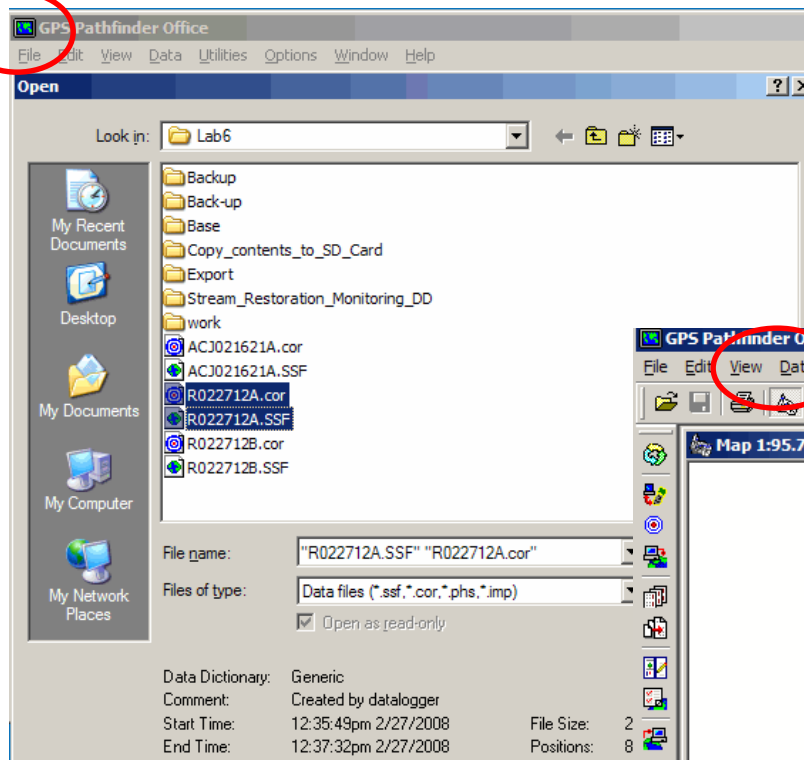


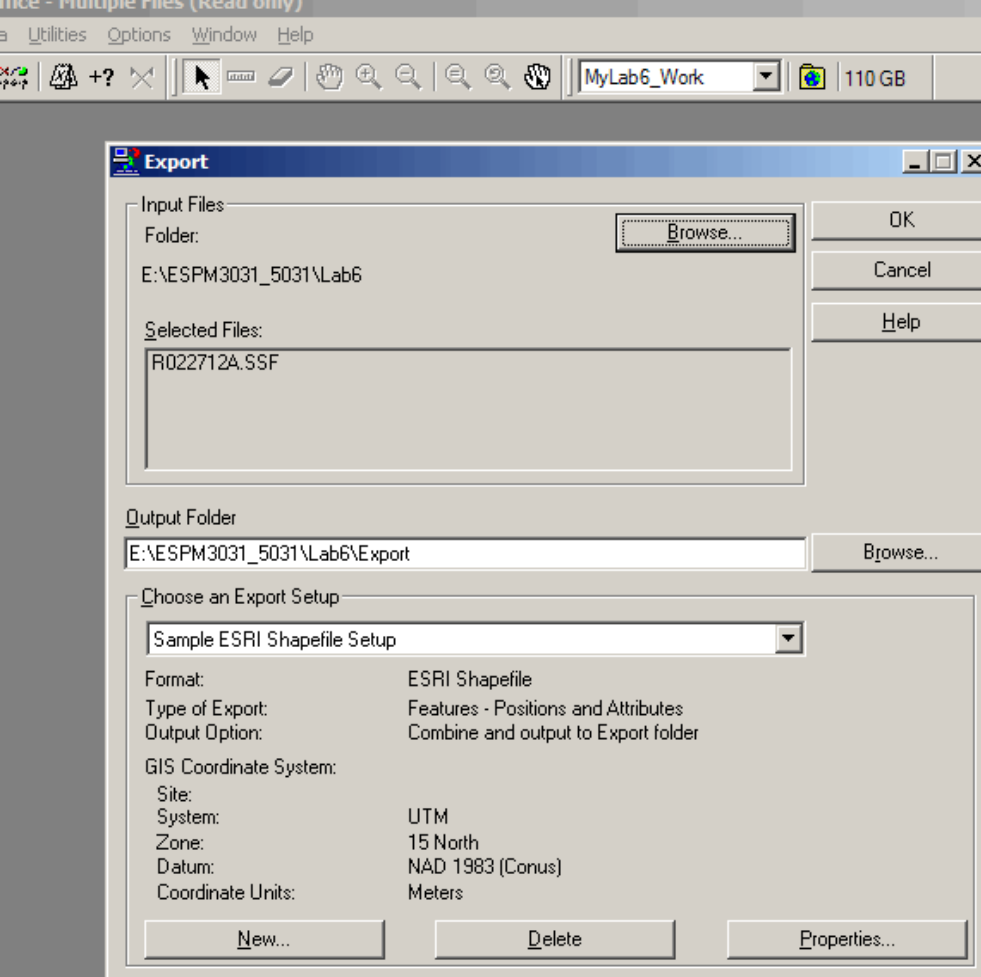


Start the
Differential
Correction

Viewing the data on a simple map

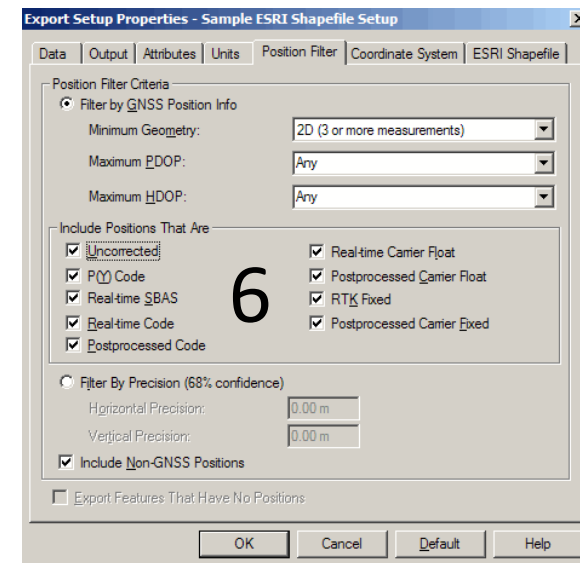
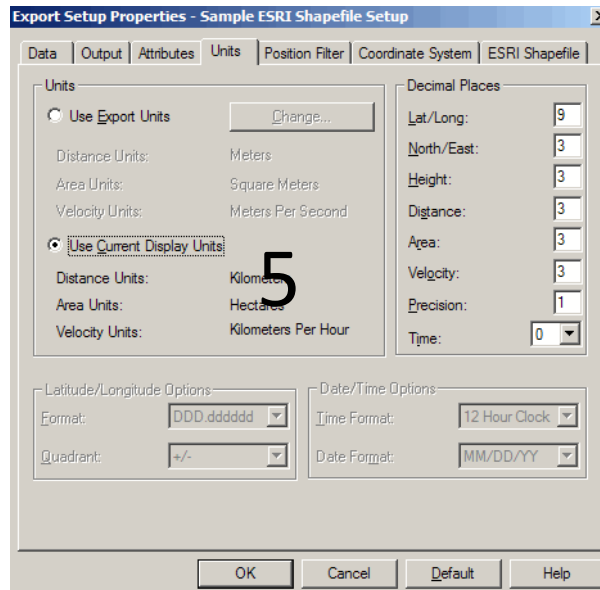
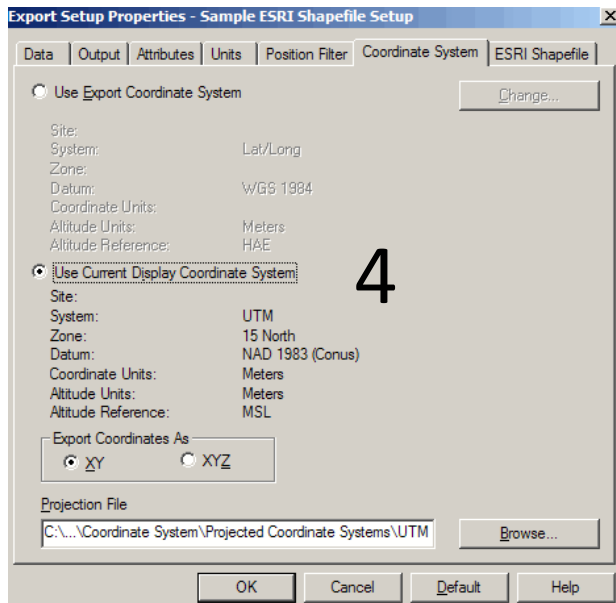
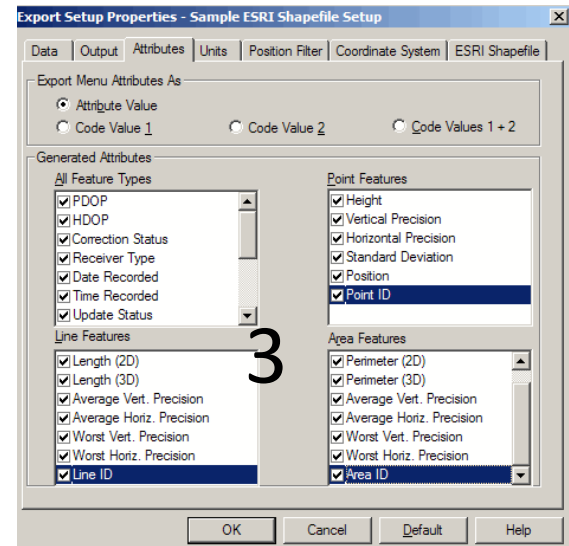
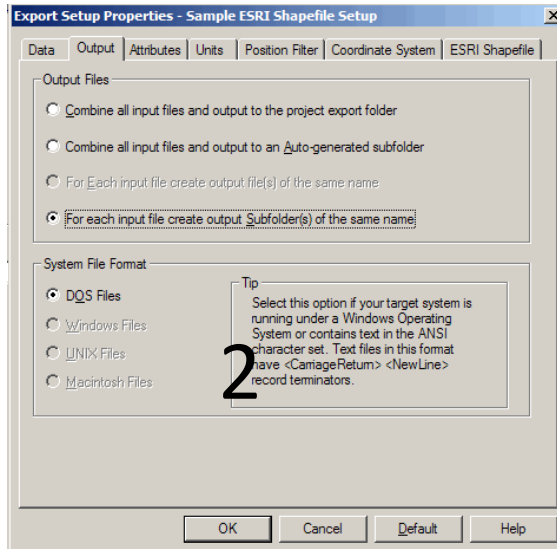
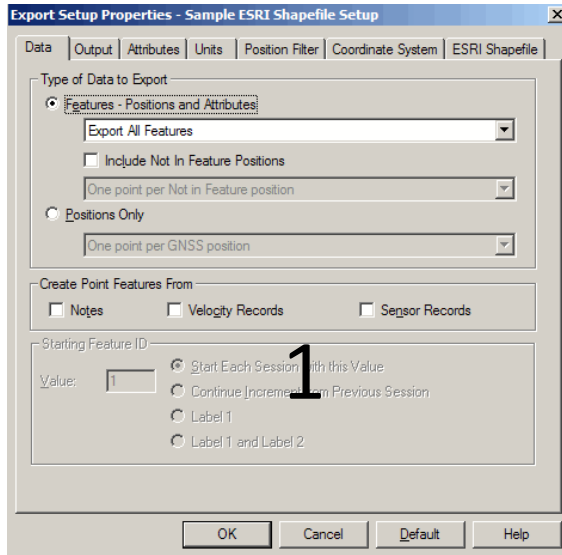
Use View & Data at the main Toolbar

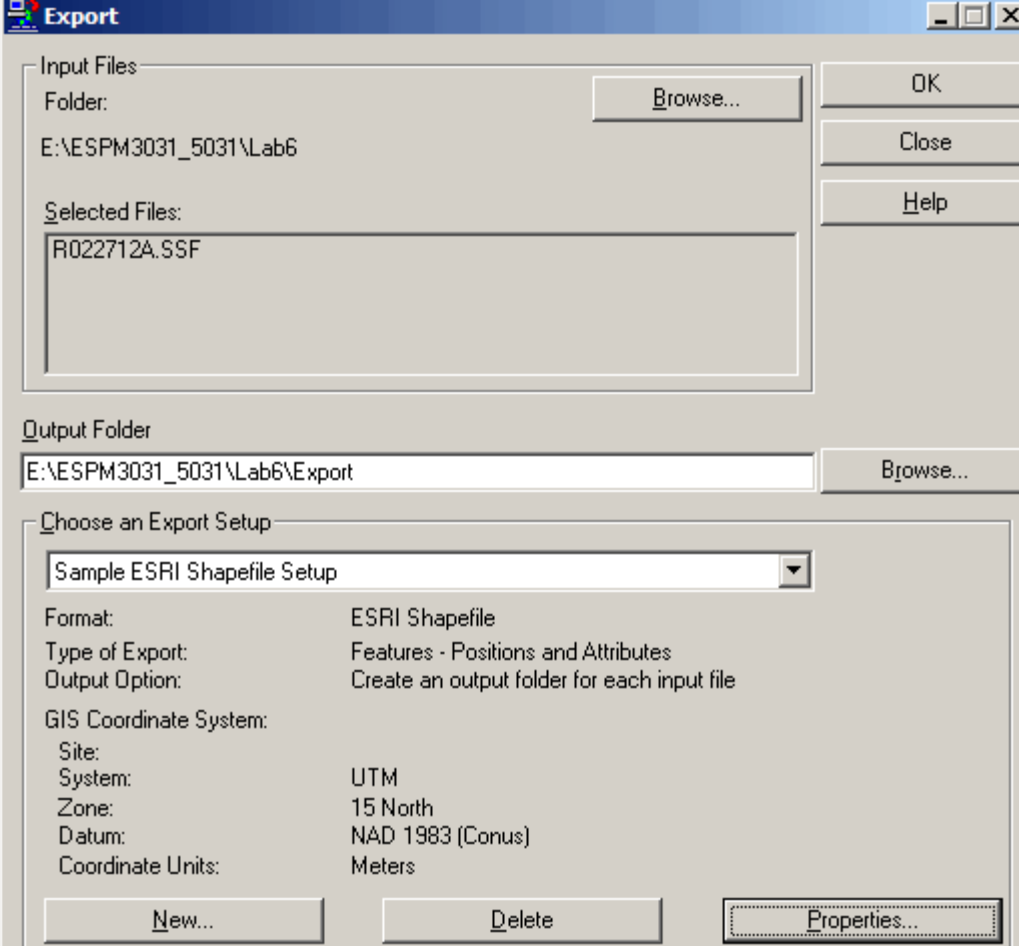




Exporting the data

Use Utilities at the
main Toolbar





Remember to export data to UNIQUE subdirectories (i.e. Uncorrected or Corrected) to avoid overwriting data.

