



### Set up your device

Get Outlook contacts, calendar, e-mail and other information on your device.



### Connect without setting up your device



Connected

Windows Mobile Device Center



Home ▶ Quick Connect



Programs and Services



Pictures, Music and Video



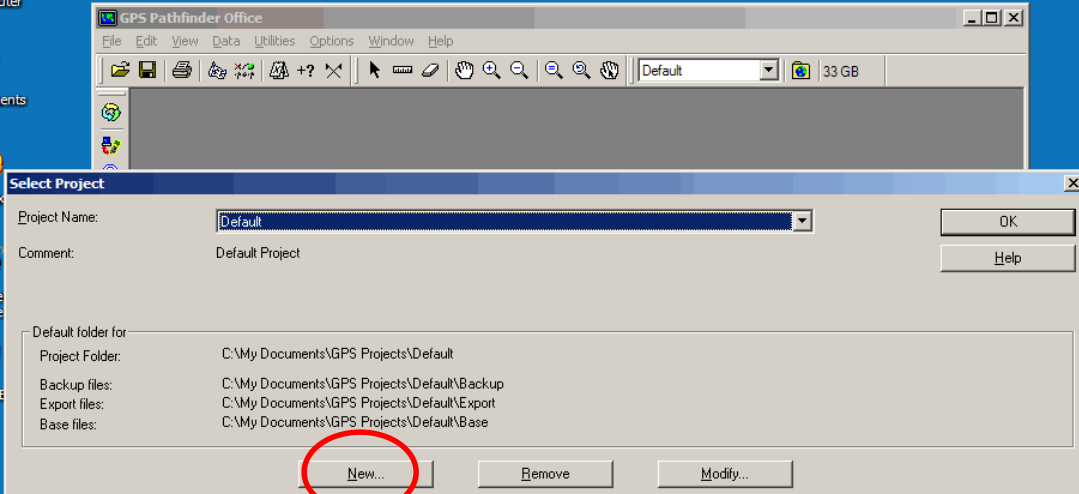
File Management



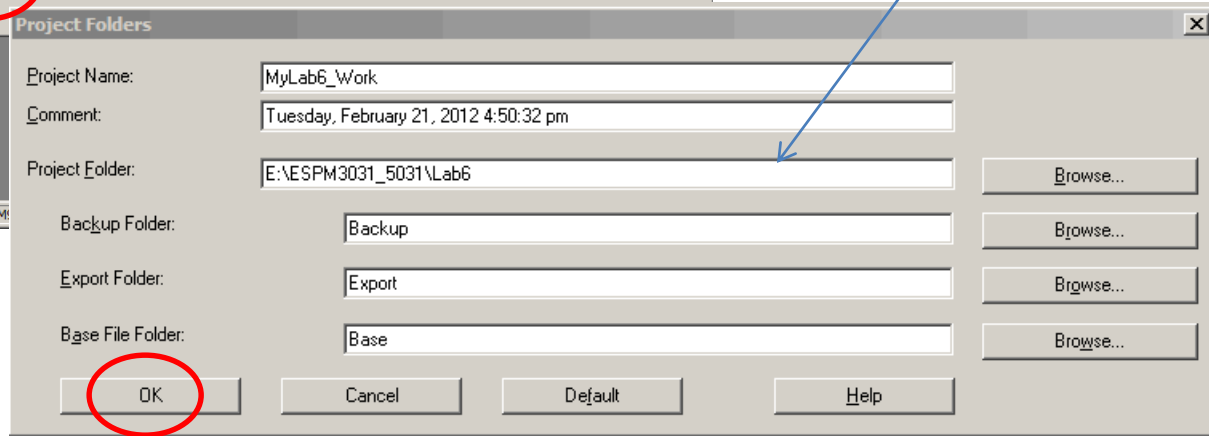
Mobile Device Settings



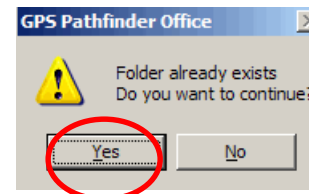
Connected



Fill in where you want your data to be stored

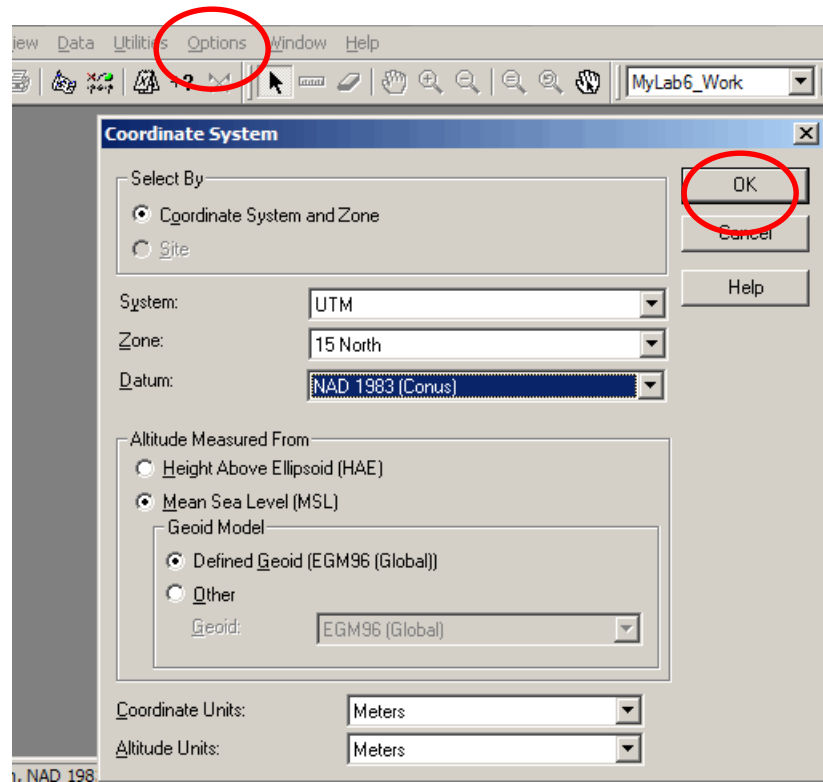


# STARTING PATHFINDER OFFICE

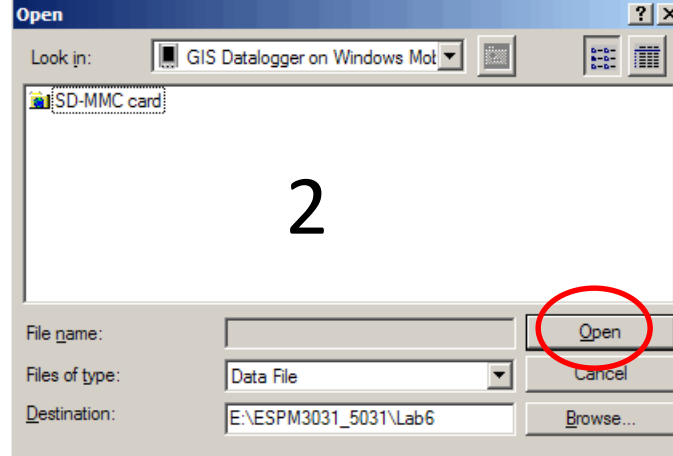
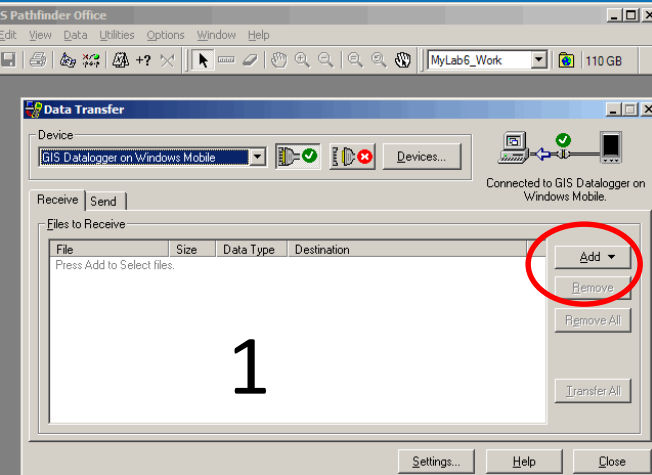


# Setting the coordinate system

Use Options at the main Toolbar

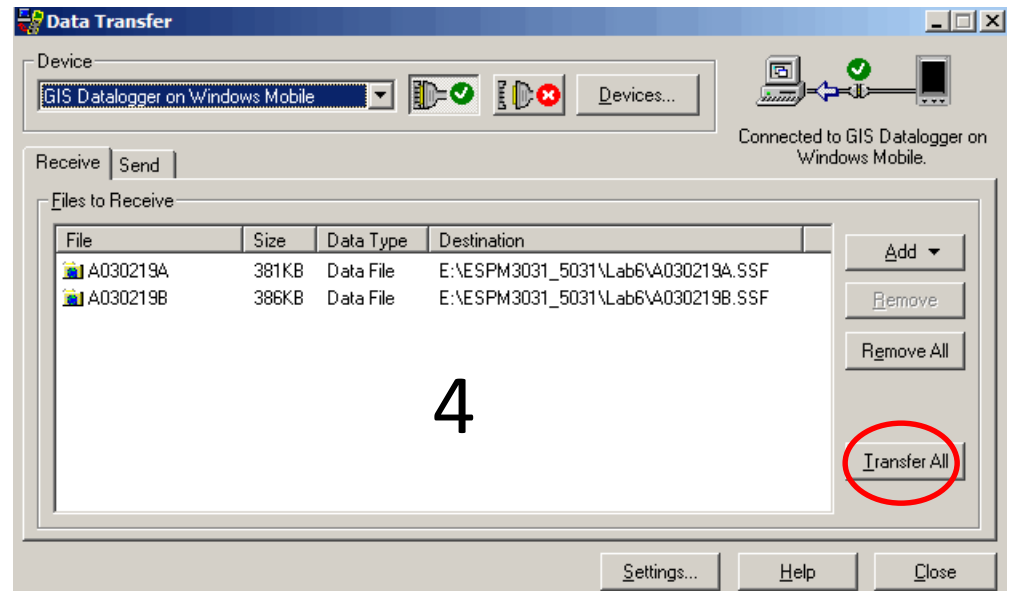
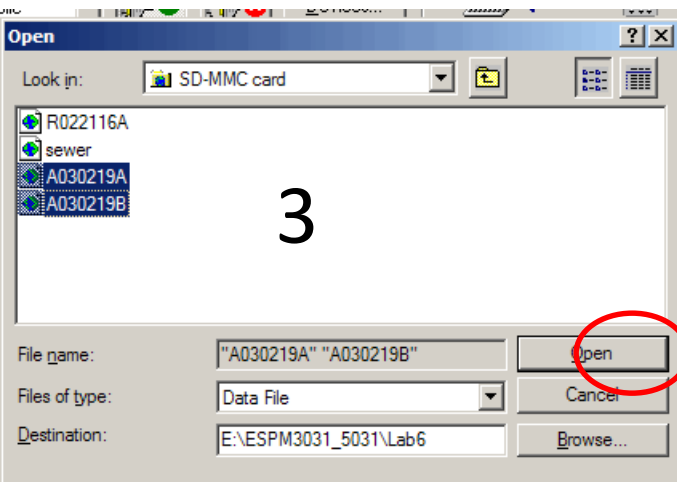


Note your datum may need to be CORS96 to match more accurate data layers.



Data Transfer to or from computer

Use Utilities at the main Toolbar



Select SSF files to correct

R022712B.SSF  
R022712A.SSF

1

Start Time: 02/27/08 12:37:42  
End Time: 02/27/08 12:42:11  
Folder: E:\ESPM3031\_5031\Lab1  
Positions: 95  
Collected with H-Star receiver: No

< Back Next >

Differential Correction Wizard

Processing Type

Automatic Carrier and Code Processing (Recommended)  
 Code Processing Only  
 Carrier Processing Only

H-Star Processing

Use multiple base providers  
 Use a single base provider

2

< Back Next >

Differential Correction Wizard

Correct Settings

Output corrected positions only  
Smart automatic rover filtering  
Re-correct real-time positions

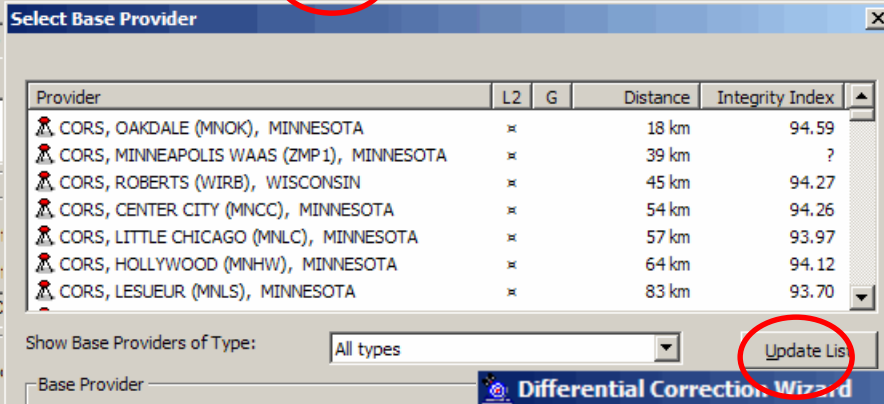
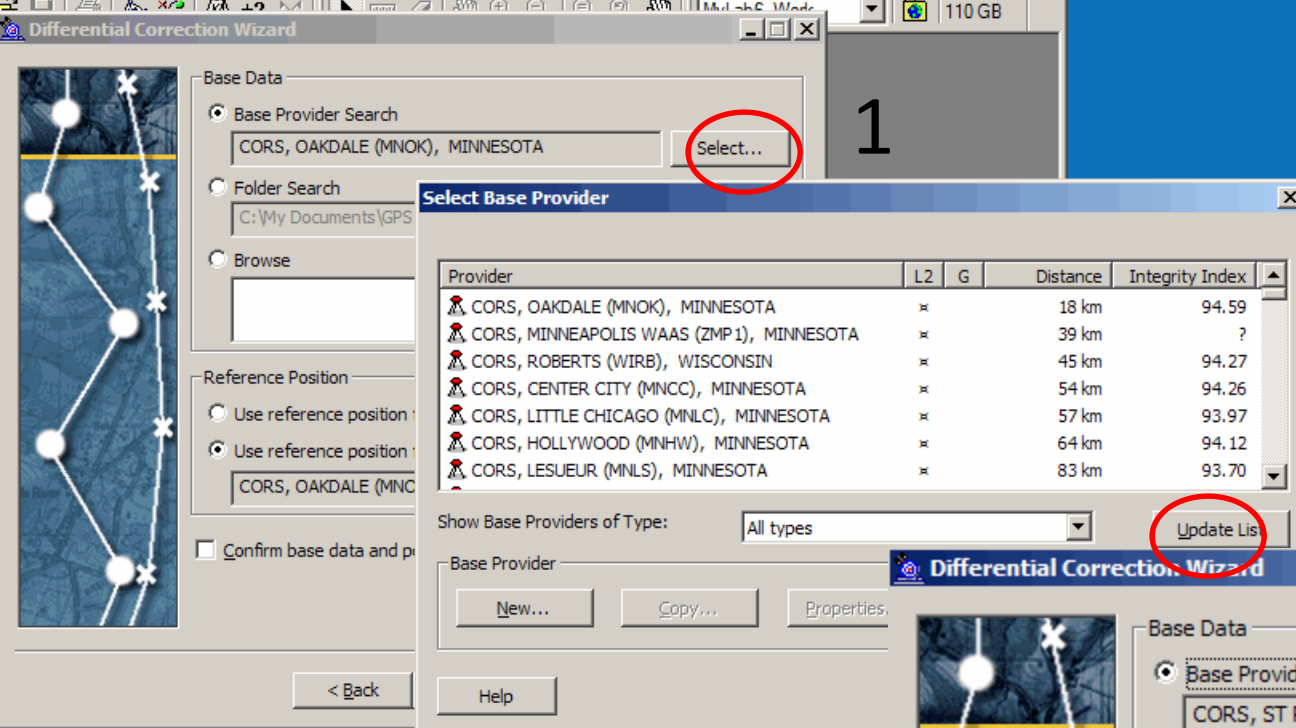
Change...

< Back Next > Cancel Help

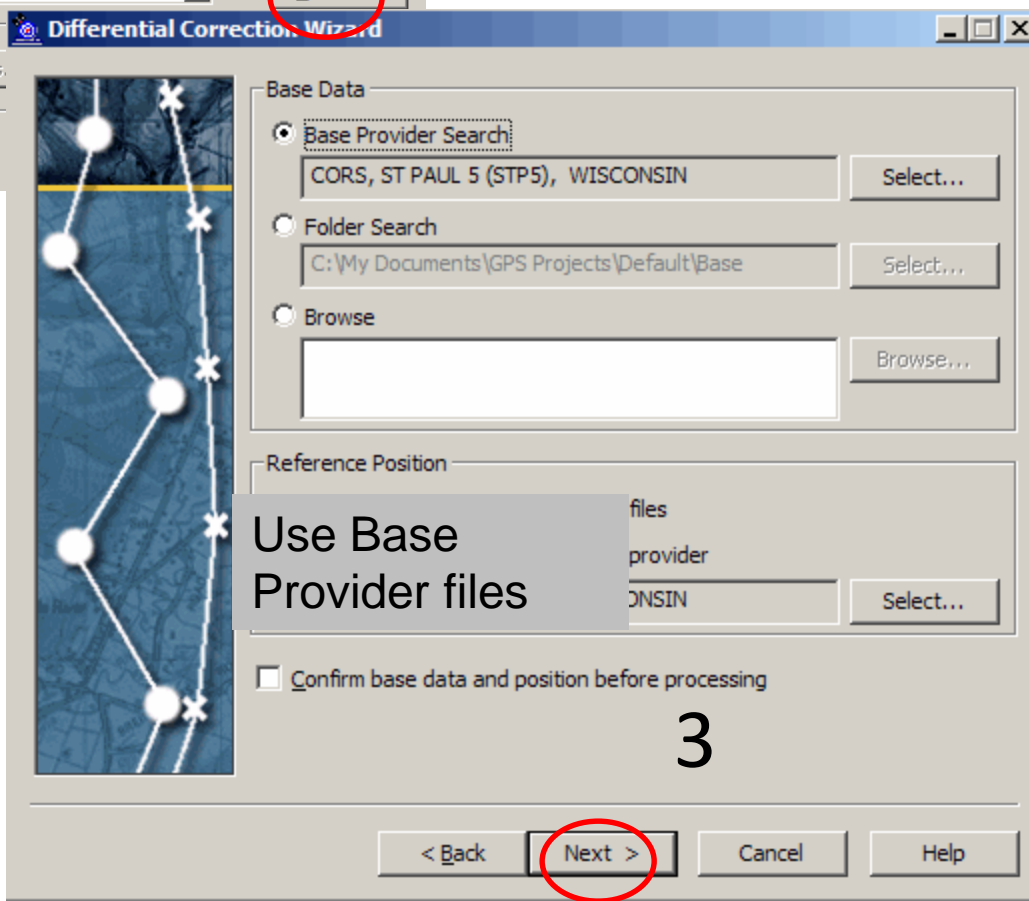
3

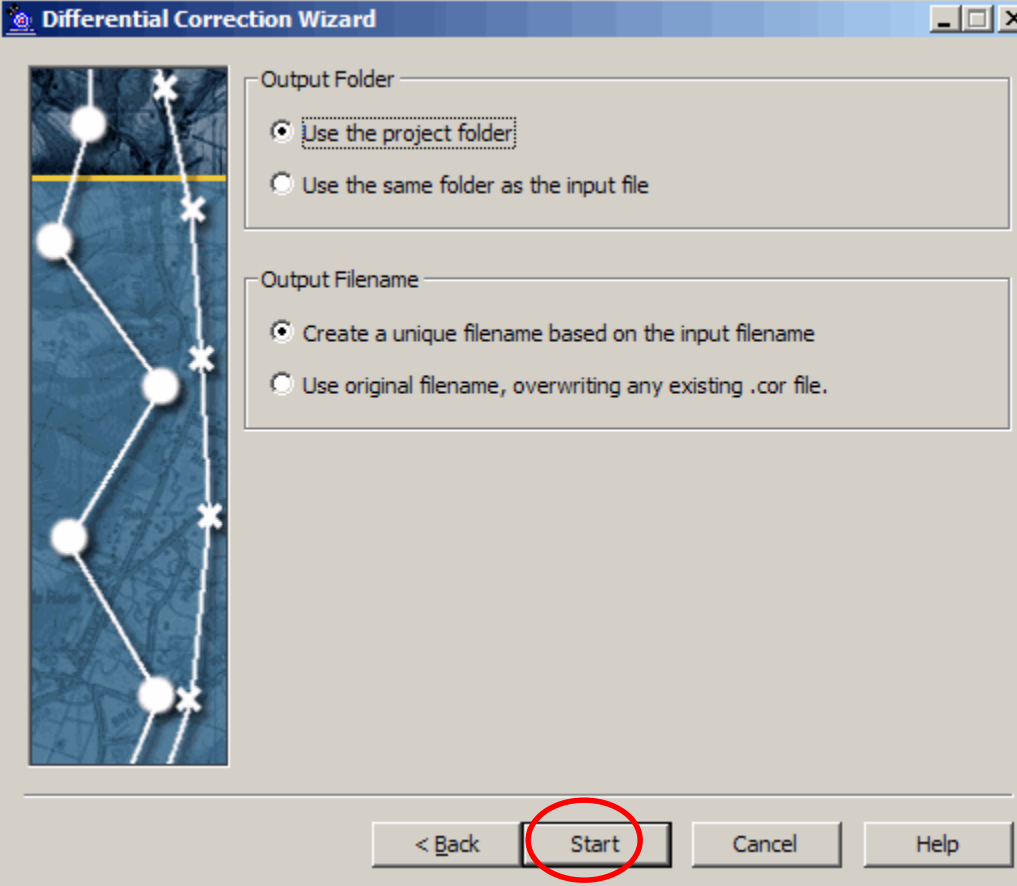
Differential Correction

Use Utilities at the main Toolbar



Select the nearest site. You may have to try several as some might have missed your times or dates



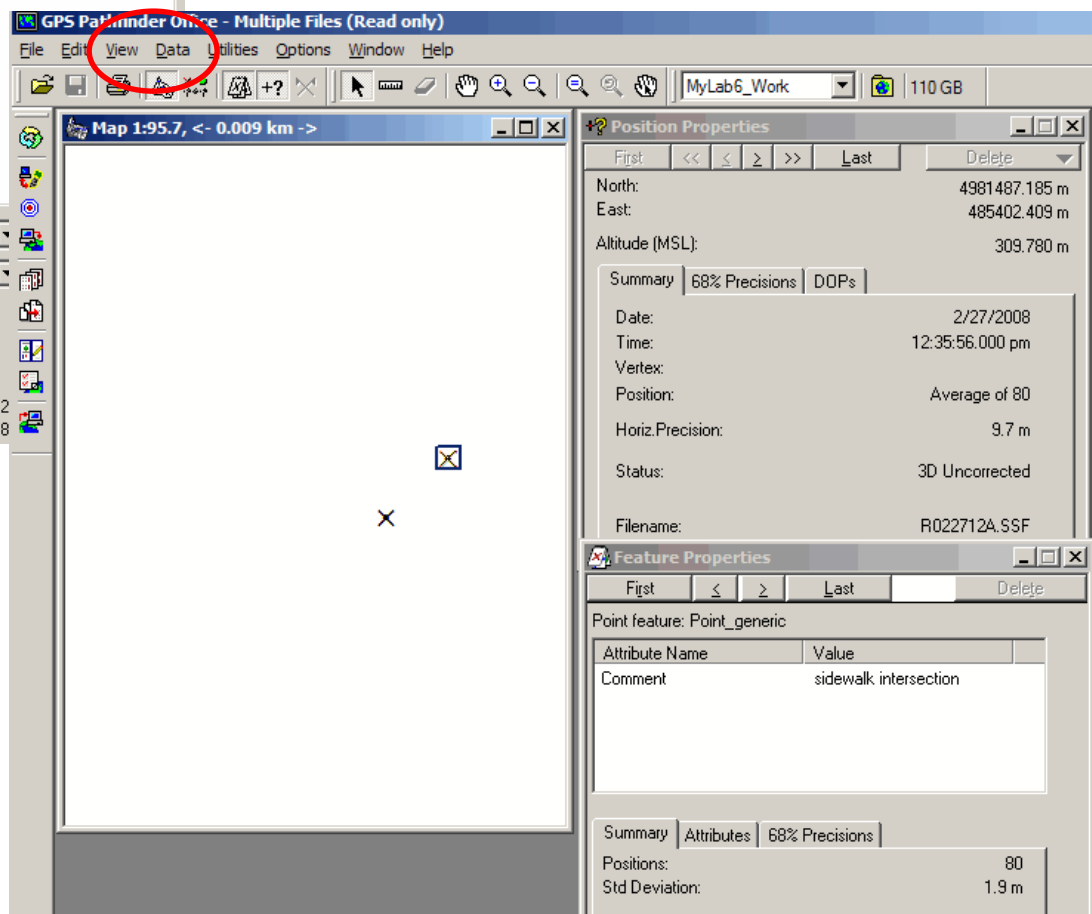
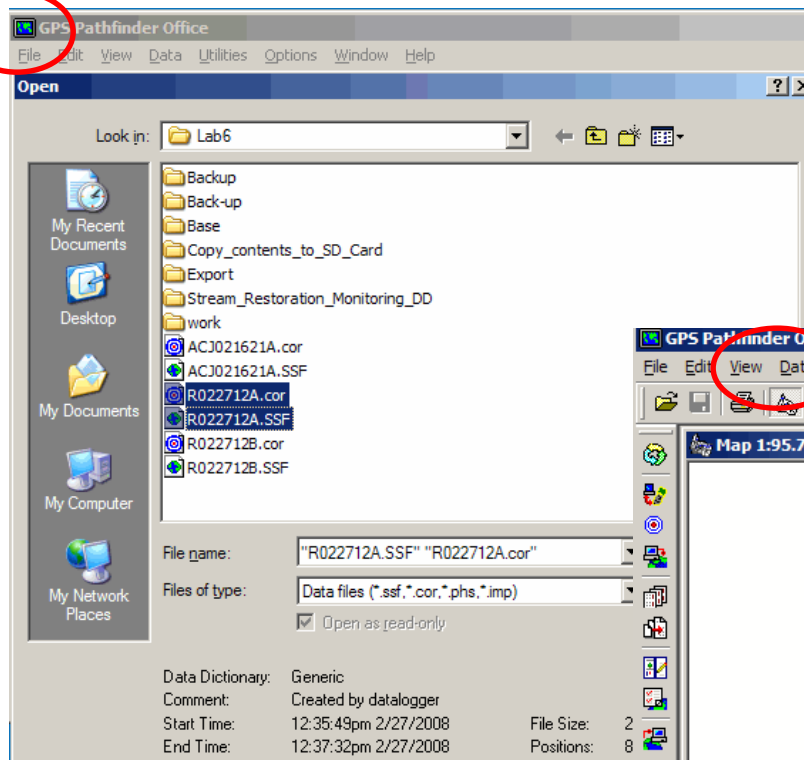


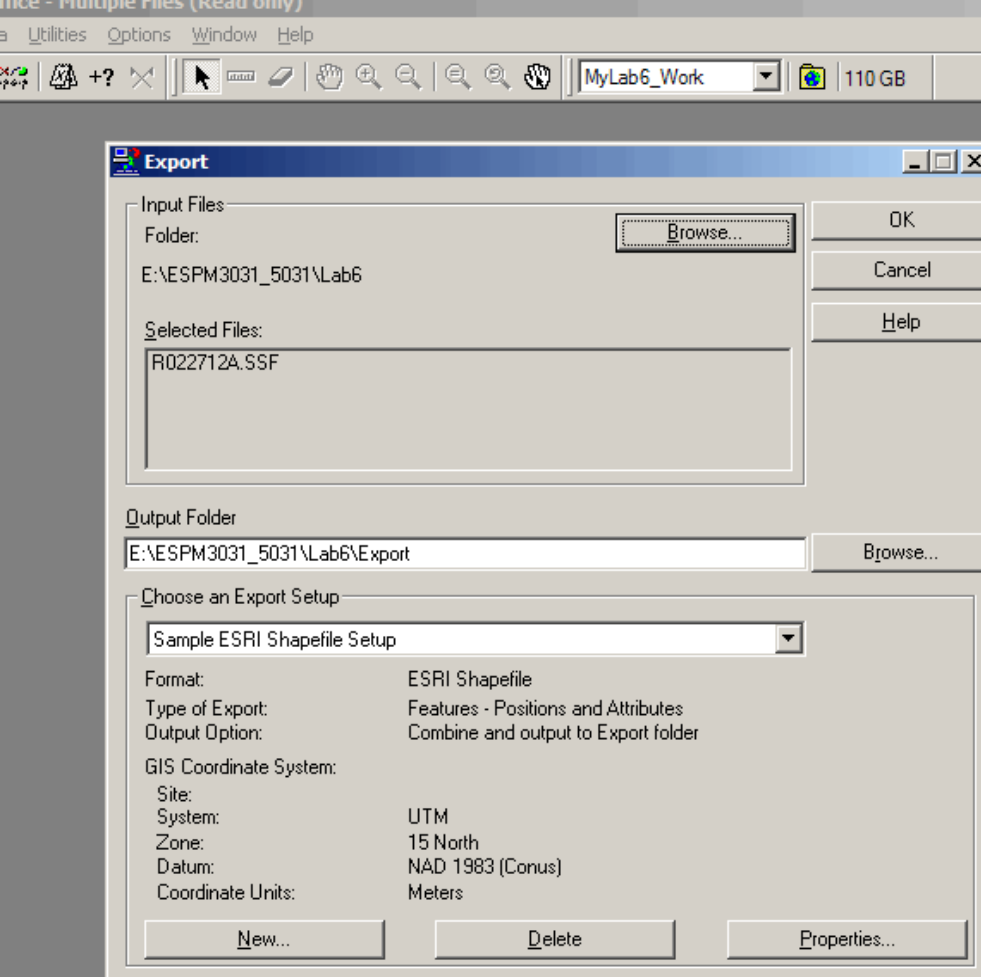
Start the  
Differential  
Correction



Viewing the data  
on a simple map

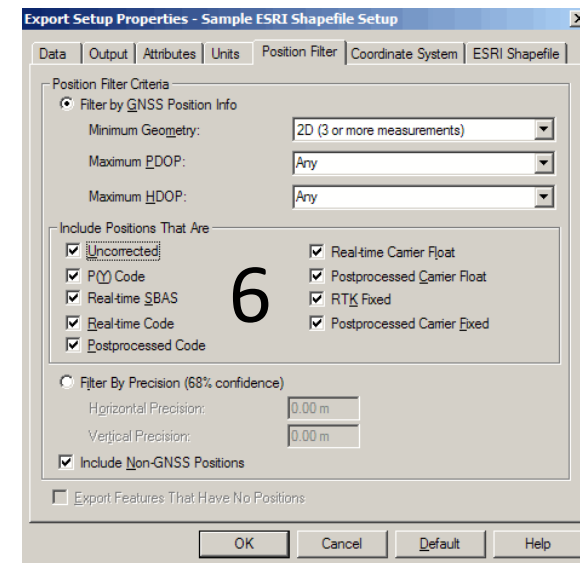
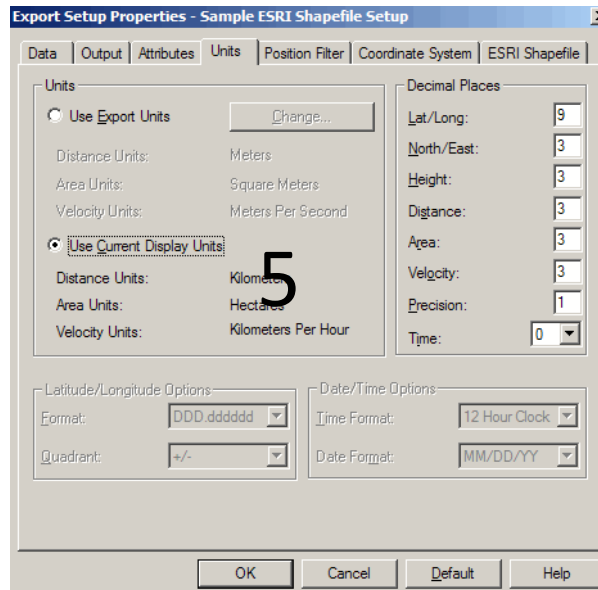
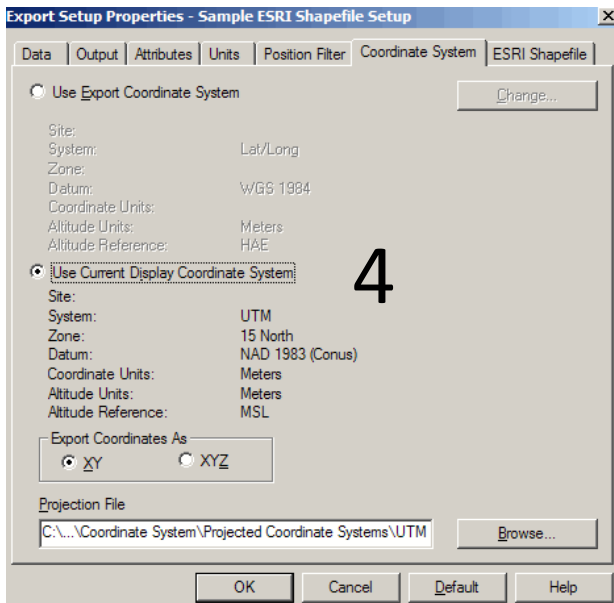
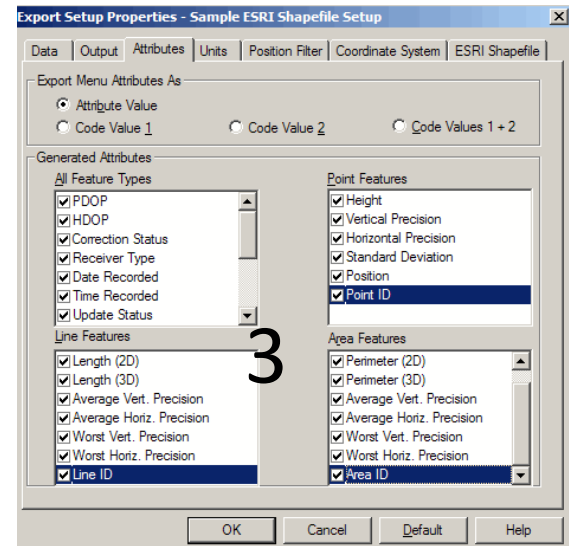
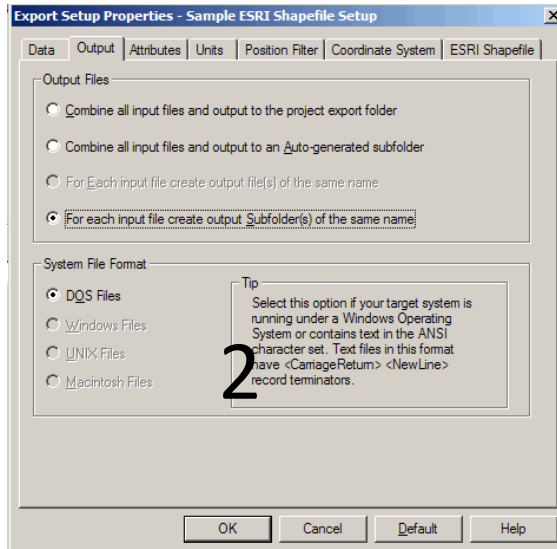
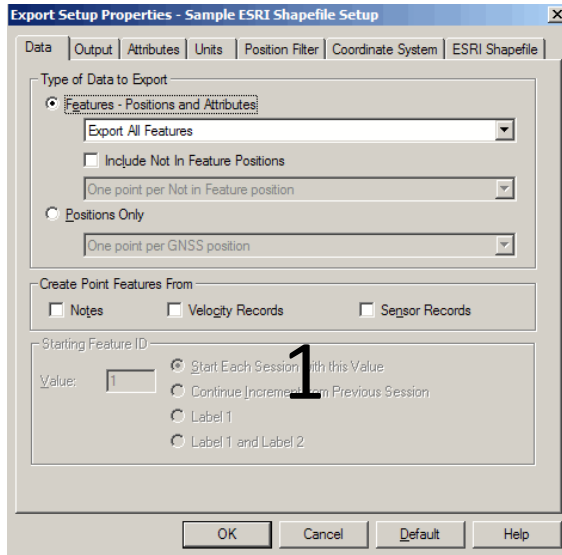
Use View & Data at  
the main Toolbar

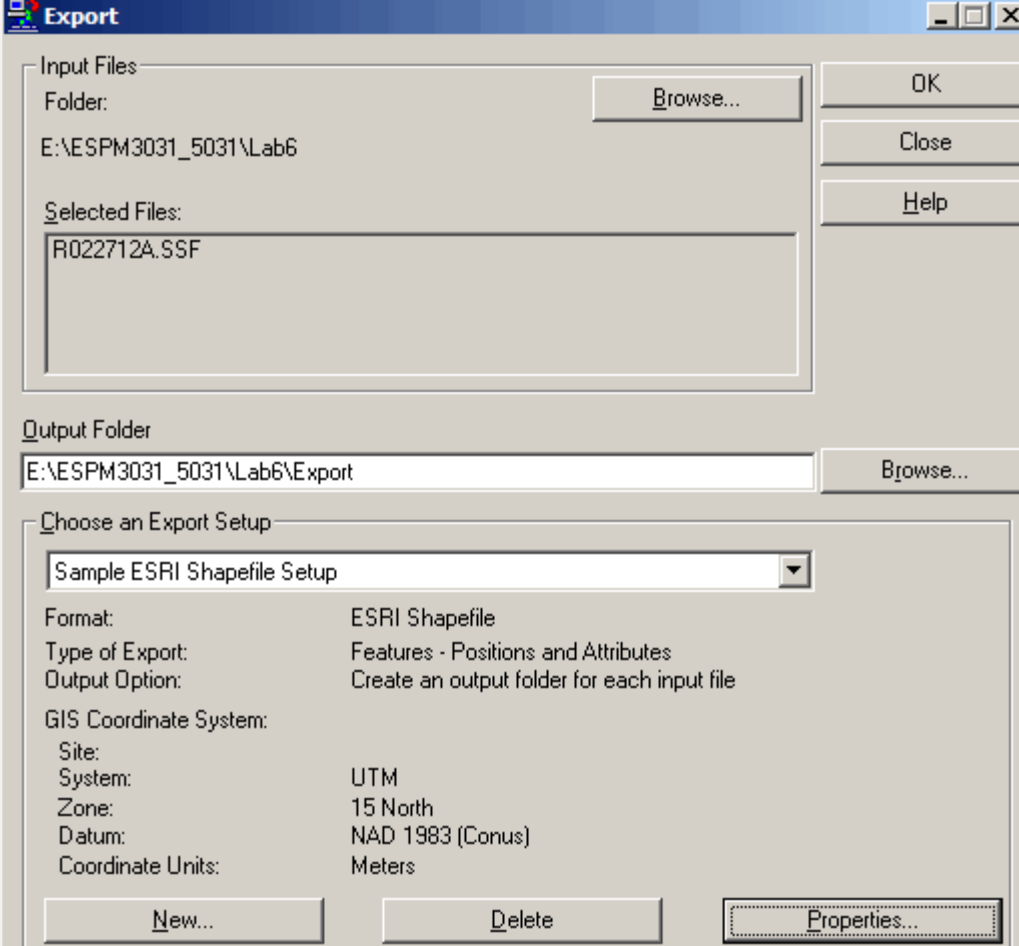




Exporting the data

Use Utilities at the  
main Toolbar





Remember to export data to UNIQUE subdirectories (i.e. Uncorrected or Corrected) to avoid overwriting data.

