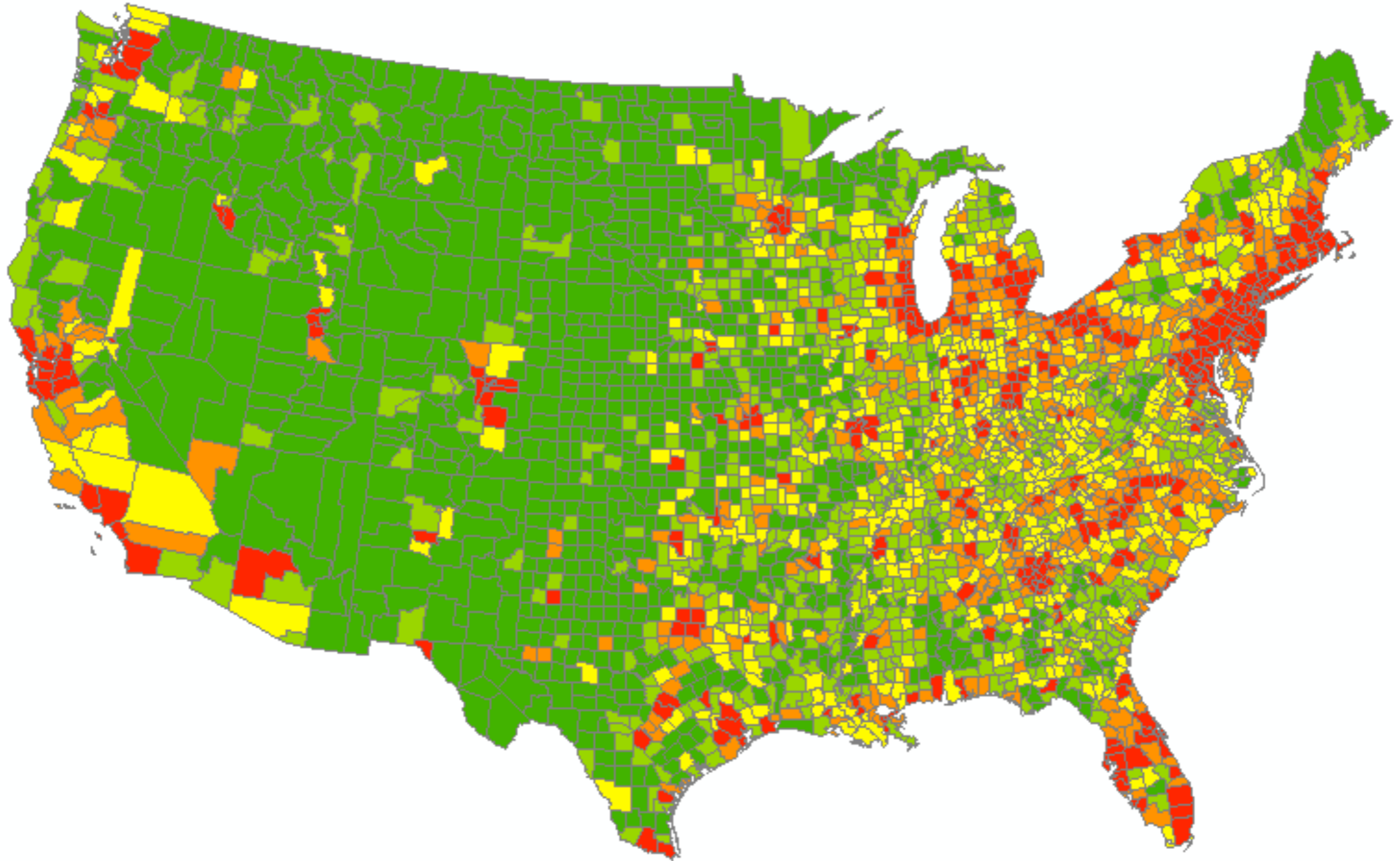


# Map Suitable Windpower Sites

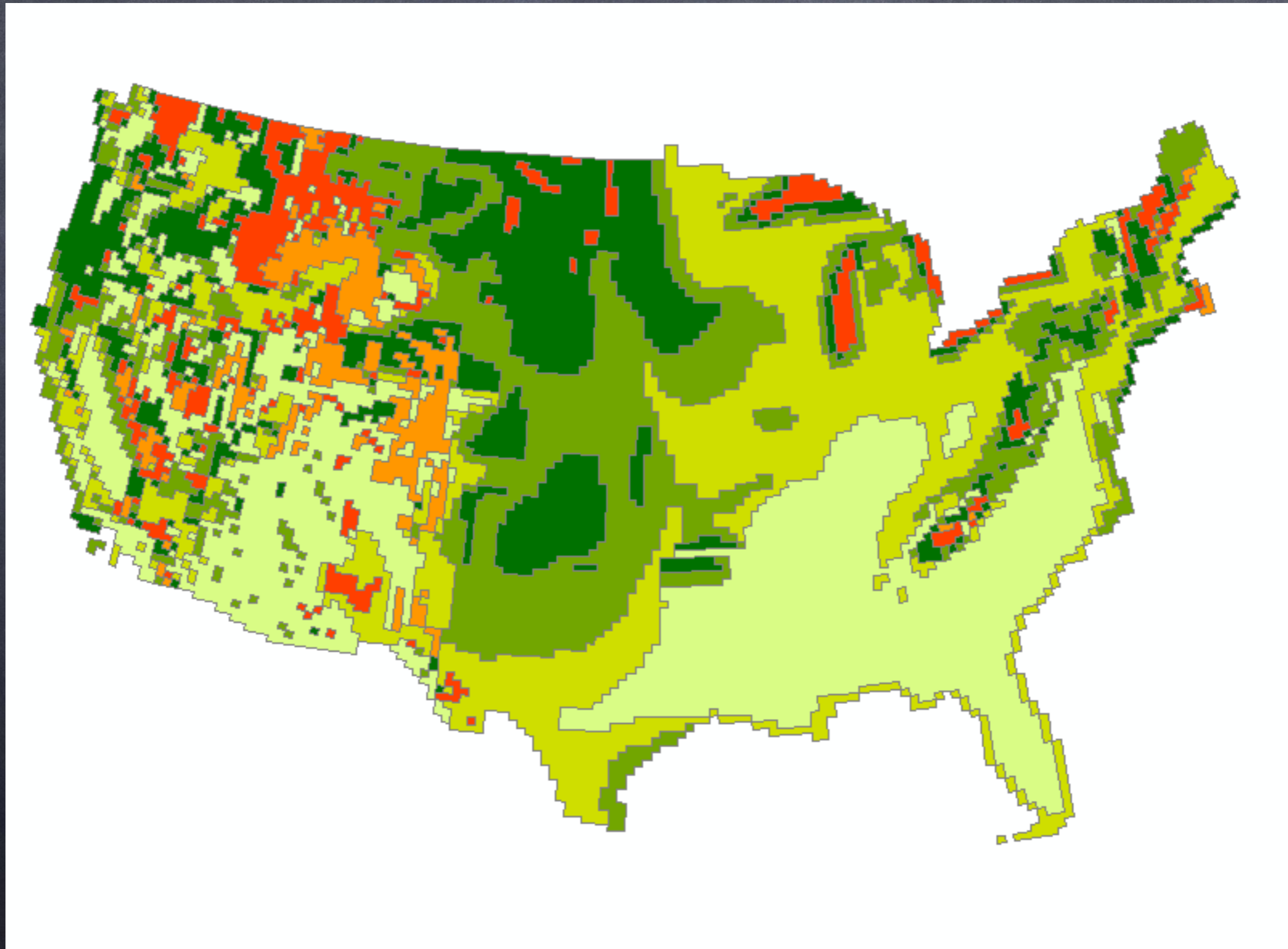
- Low population density ( $< 25$  people/sq. mile)
- Better than average wind speed (above 50% mean speed)

Data?

# U.S. Population



Wind Rating, Low (light green) to High (red/orange)



Steps?

# Steps

- Reclass population
- Dissolve to suitable/unsuitable
- Reclass windspeed
- Dissolve to suitable/unsuitable
- Union population, windspeed reclassifications
- Reclass, Dissolve

populat.  
density

reclass

pop.  
reclassified

dissolve

popclass,  
binary

Suitable  
Unsuit.

reclass

Union  
Wind &  
pop

Overlay

wind  
speed

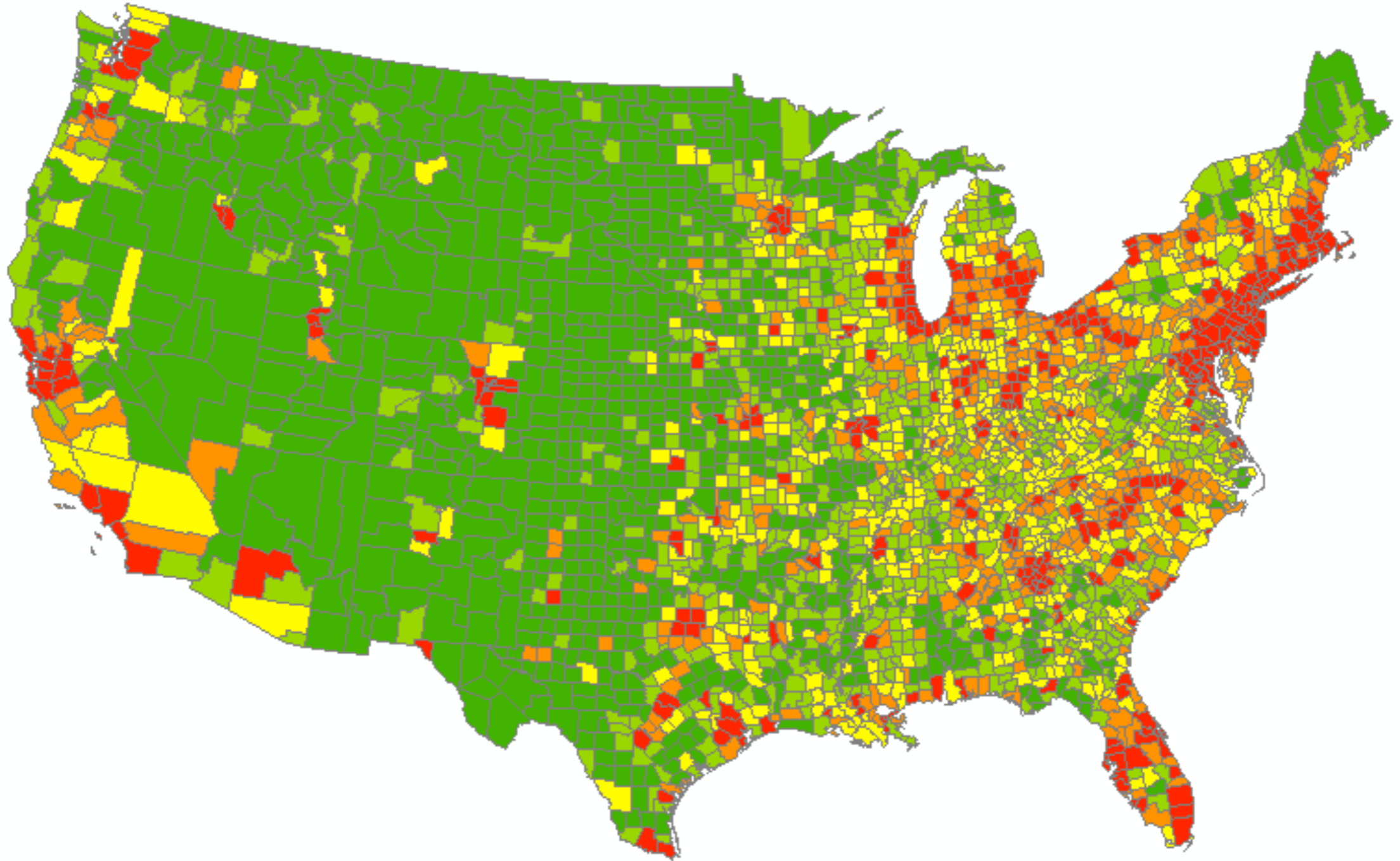
reclass

W.speed  
reclassified

dissolve

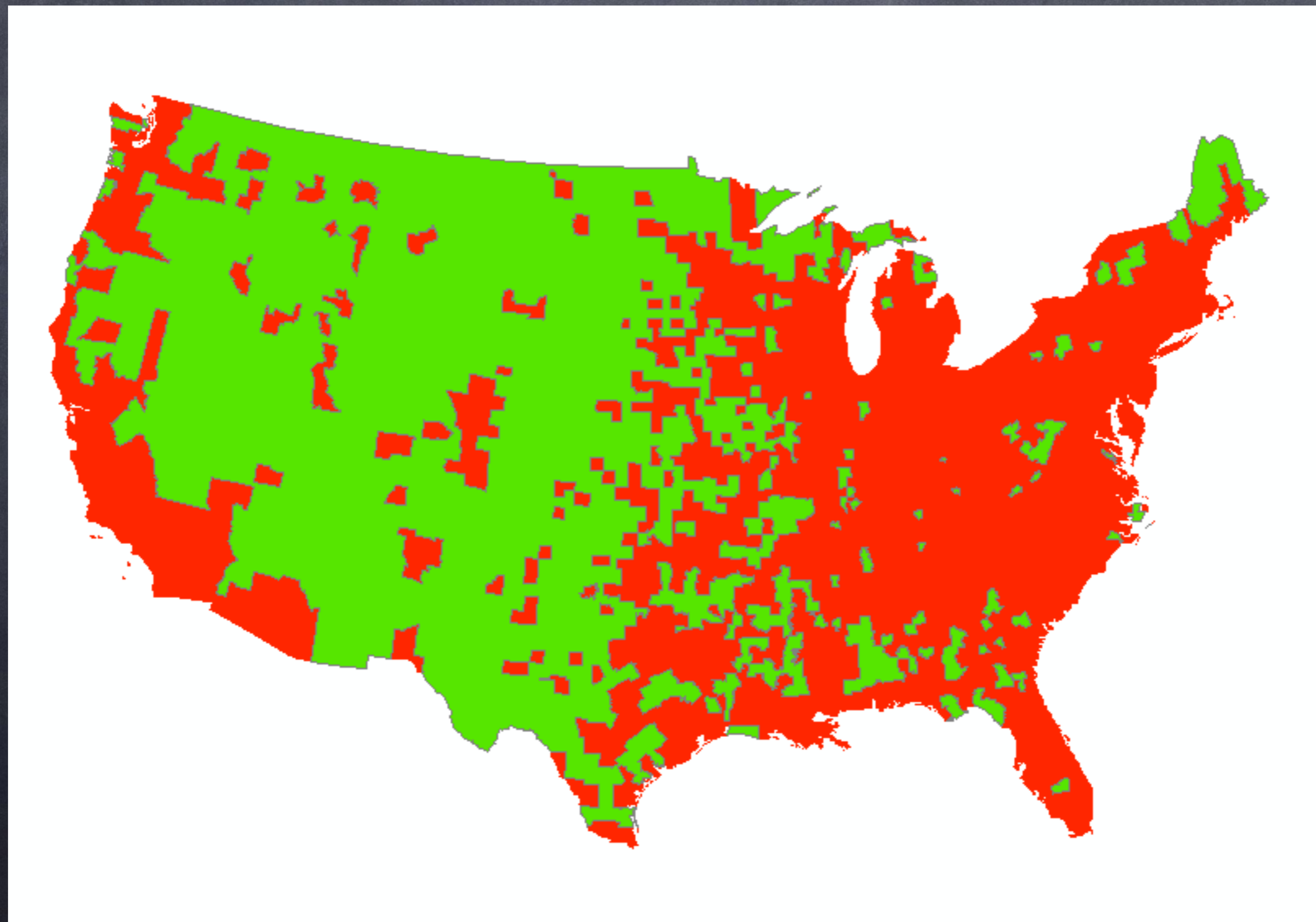
Windclass,  
binary

# U.S. Population

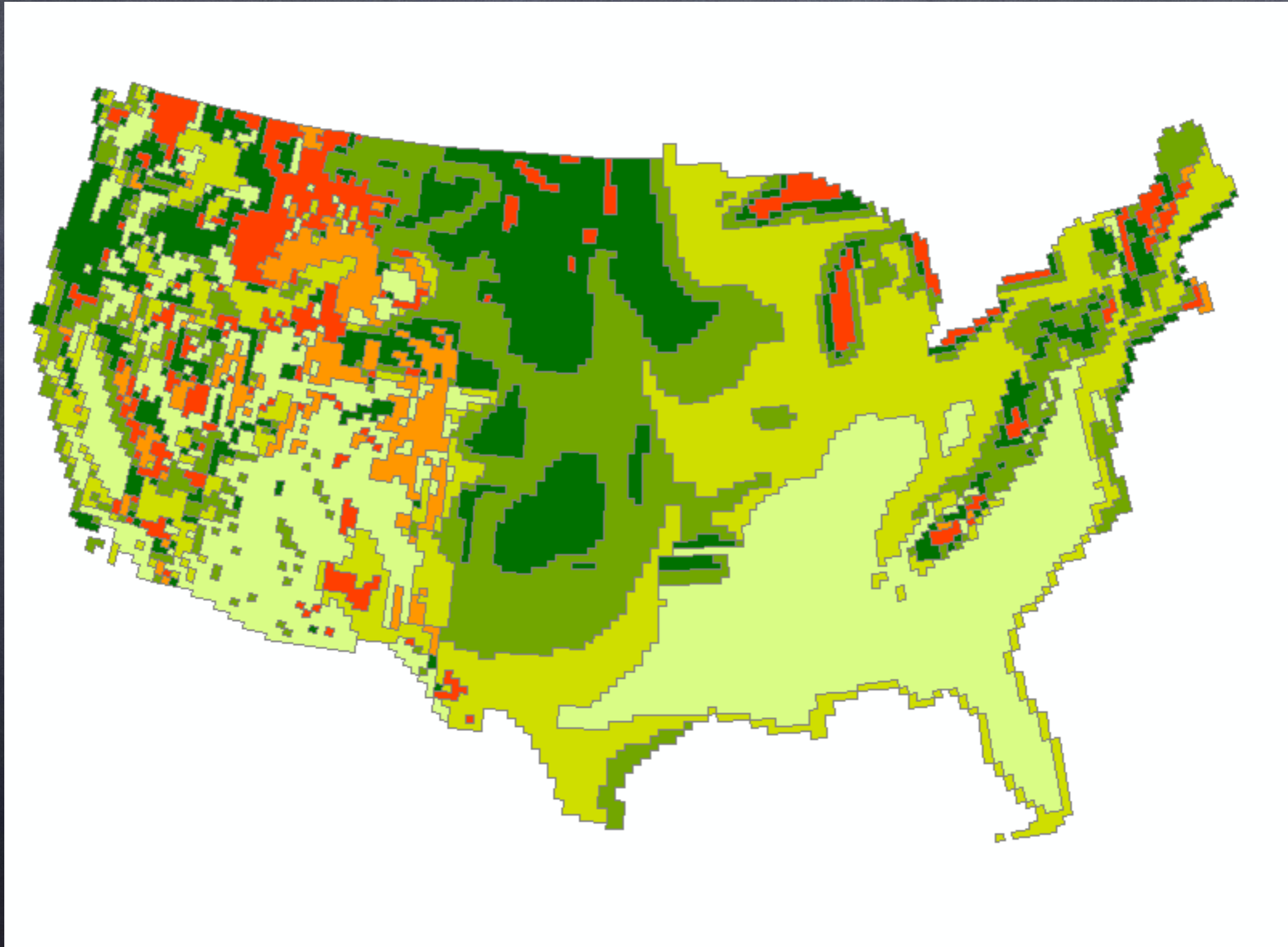




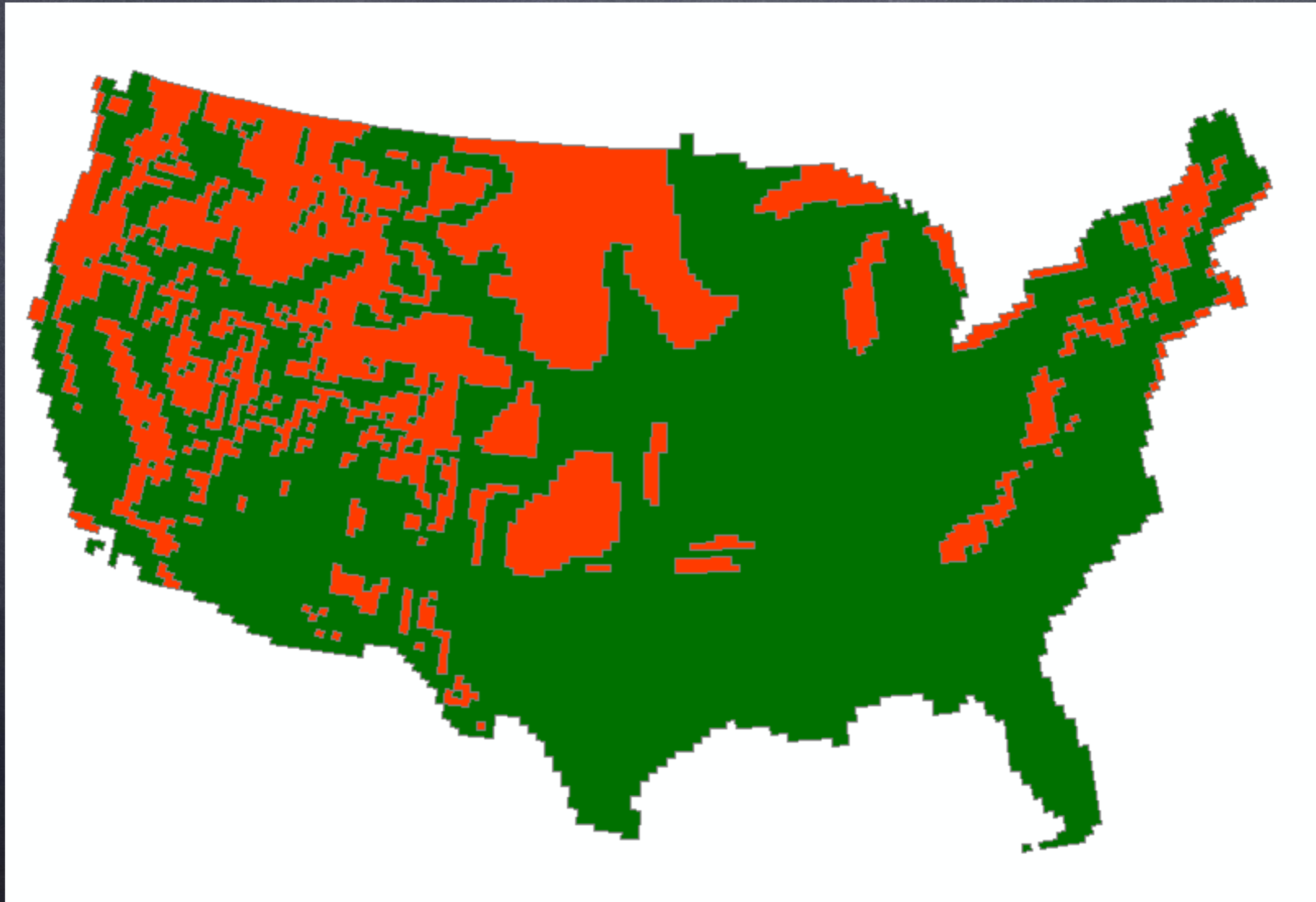
Population Density < 25/sq mi (green)



Wind Rating, Low (light green) to High (red/  
orange)



# Wind Rating, Recoded (suit. in red)



# Suitable Sites (yellow)

